



Connells

Sherwell Valley Road
Torquay



Property Description

Located in the ever-popular area of Chelston, this spacious four-bedroom terraced home on Sherwell Valley Road offers versatile accommodation ideal for family living, along with excellent outdoor space and off-road parking for two vehicles.

The property welcomes you with a practical entrance leading through to a bright and sociable open-plan living, kitchen and dining area - a fantastic space for both everyday living and entertaining. The layout flows naturally and is complemented by a useful utility room, a convenient downstairs WC, and an additional ground-floor shower room, adding flexibility for busy households or visiting guests.

Upstairs, the first floor hosts three well-proportioned bedrooms served by a modern family bathroom, providing comfortable accommodation for growing families.

With the benefit of a further large bedroom with storage in the loft.

To the rear, the tiered garden offers a great sense of privacy and presents exciting potential for landscaping, outdoor seating areas, or a family-friendly garden retreat. To the front, a private driveway provides off-road parking for two cars - a valuable feature in this sought-after location.

Positioned within easy reach of local schools, amenities, and transport links, this home combines generous living space with scope to personalise, all set within a desirable residential neighbourhood.



Ground Floor

Hallway

Stairs leading to first floor and WC.

Downstairs W C

WC and wash hand basin.

Kitchen/Lounge/Dining Room

Large window to front, space for dining table, wall and base units, part tiled walls and built in oven and hob, space for appliances, door to shower room and utility room.

Utility Room

Space for appliances, window to rear and open to back garden.

Shower Room

Window to rear, shower.

First Floor

Landing

Doors to all rooms, stairs to loft

Bedroom 1

Large window to front.

Bedroom 3

Window to rear.

Bedroom 4

Window to front.

Bathroom

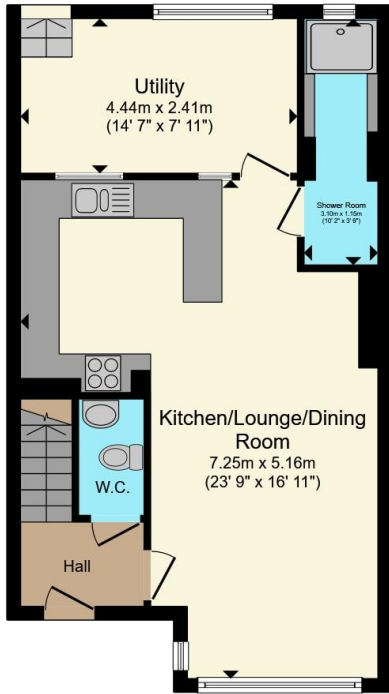
Window to rear, bath, WC and wash hand basin.

Second Floor

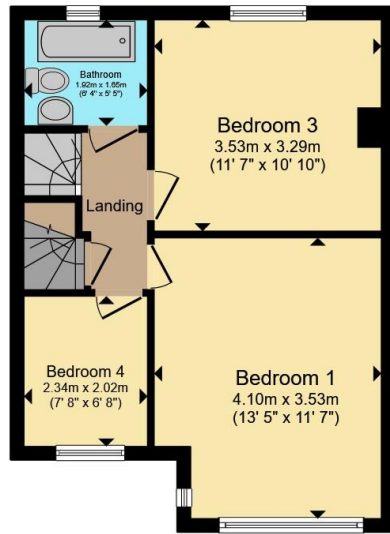
Bedroom 2

Rooflights and built in storage.

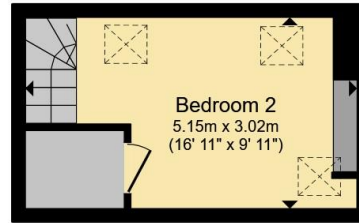




Ground Floor



First Floor



Second Floor

Total floor area 109.6 m² (1,180 sq.ft.) approx

This floor plan is for illustrative purposes only. It is not drawn to scale. Any measurements, floor areas (including any total floor area), openings and orientation are approximate. No details are guaranteed, they cannot be relied upon for any purpose and they do not form part of any agreement. No liability is taken for any error, omission or misstatement. A party must rely upon its own inspection(s). Powered by www.propertybox.io



To view this property please contact Connells on

T 01803 213 641
E torquay@connells.co.uk

115 Union Street
 TORQUAY TQ1 3DW

EPC Rating: D Council Tax
 Band: B

Tenure: Freehold

view this property online connells.co.uk/Property/TQY315037



1. MONEY LAUNDERING REGULATIONS Intending purchasers will be asked to produce identification documentation at a later stage and we would ask for your co-operation in order that there will be no delay in agreeing the sale. 2. These particulars do not constitute part or all of an offer or contract. 3. The measurements indicated are supplied for guidance only and as such must be considered incorrect. Potential buyers are advised to recheck measurements before committing to any expense. 4. We have not tested any apparatus, equipment, fixtures, fittings or services and it is in the buyers interest to check the working condition of any appliances.

Connells Residential is registered in England and Wales under company number 1489613, Registered Office is Cumbria House, 16-20 Hockliffe Street, Leighton Buzzard, Bedfordshire, LU7 1GN. VAT Registration Number is 500 2481 05.

See all our properties at www.connells.co.uk | www.rightmove.co.uk | www.zoopla.co.uk

Property Ref: TQY315037 - 0003