



WAYNE DIGGINS

exp[®] UK

@wayne.diggins@exp.uk.com

waynediggins.exp.uk.com

07715 925 332

Turp Avenue, Grays, RM16 2SH

Guide Price £390,000

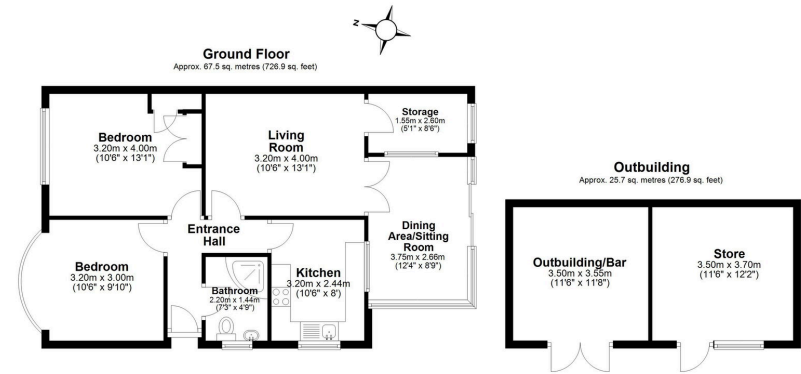
2 1 1

- Beautifully presented two double bedroom semi-detached bungalow
- Located in the popular North Grays area
- Kitchen with a range of fitted units and worktop space
- Outbuilding with bar area plus separate storage/home office space
- Potential for loft conversion (STPP) to create additional living space
- Guide Price £390,000 - £405,000
- Two reception rooms offering flexible living space
- South-facing, low maintenance rear garden with patio and lawn
- Off street parking
- Awaiting - EPC



HOME SWEET HOME!!! Quote Ref: WD1273 Situated in the ever-popular North Grays area, this beautifully presented two double bedroom semi-detached bungalow offers spacious and versatile living, ideal for a range of buyers. The property welcomes you with a bright and airy entrance hallway leading to well-proportioned accommodation throughout. There are two generous double bedrooms and two reception rooms, providing flexible living space perfect for relaxing, entertaining, or creating a family dining area. The kitchen is fitted with a range of units offering ample storage and worktop space, while the modern bathroom suite is finished to a contemporary standard. A further benefit is the additional playroom/storage room, which offers excellent potential to be converted into a useful utility room. Externally, the property continues to impress. Guide Price £390,000 - £405,000





Total area: approx. 93.3 sq. metres (1003.8 sq. feet)

This floor plan has been created by a third party and should be used as a general outline for guidance only. Any areas, measurements or distances quoted are approximate and any intending purchaser or lessee should satisfy themselves by inspection, searches, enquiries and/or full survey as to the correctness of each statement. We accept no responsibility or liability for any loss whatsoever that may arise as a result of this plan and the information contained within.

© @modphotouk | www.modphoto.co.uk

Plan produced using PlanUp

Turp Avenue

