



76 RANGER DRIVE WOLVERHAMPTON, WV10 6BZ

OFFERS IN THE REGION OF £240,000
FREEHOLD

Modern three bedroom semi detached home situated in an extremely popular location close to a range of amenities including schools, shops and access to public transport with the wider amenities of Wolverhampton City Centre only a short drive away. The property offers spacious and well appointed accommodation throughout comprising entrance hall, guest cloakroom, living room, dining kitchen, three bedrooms with ensuite to bedroom one, family bathroom and a pleasant enclosed garden to the rear. A driveway to the front provides off road parking.



76 RANGER DRIVE

- Extremely Well Presented Three Bedroom Semi-Detached Home
- Popular Location Convenient For Access to I54 Development & M54 Motorway Network
- Guest Cloakroom To Ground Floor
- Master Bedroom With En-Suite Shower Room
- Enclosed Garden To Rear
- Driveway Providing Off Road Parking



ENTRANCE HALL

GUEST CLOAKROOM

LIVING ROOM

DINING KITCHEN

LANDING

BEDROOM ONE

ENSUITE

BEDROOM TWO

BEDROOM THREE

FAMILY BATHROOM

REAR GARDEN

COUNCIL TAX

Wolverhampton City Council - Tax Band B

SERVICES

The agent understands that mains gas, electricity, water and drainage are available.

TENURE Freehold

The property is freehold.

BROADBAND

Ofcom checker shows Standard / Superfast / Ultrafast are available

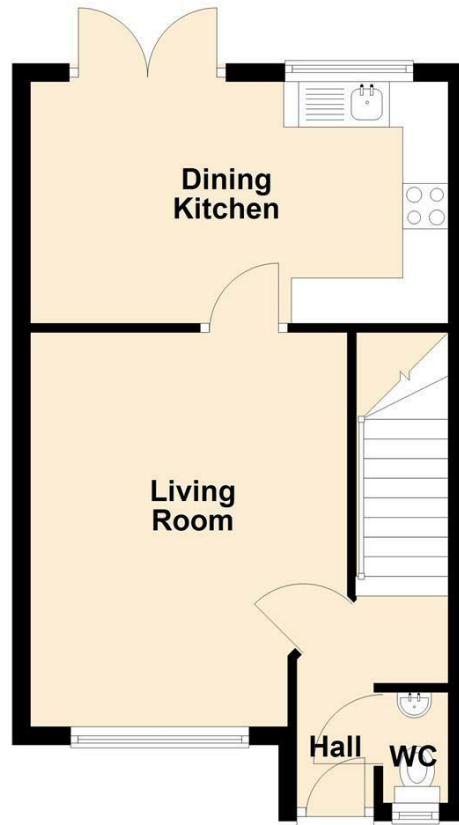
Ofcom provides an overview of what is available.

Potential purchasers should contact their preferred supplier to confirm availability and speed

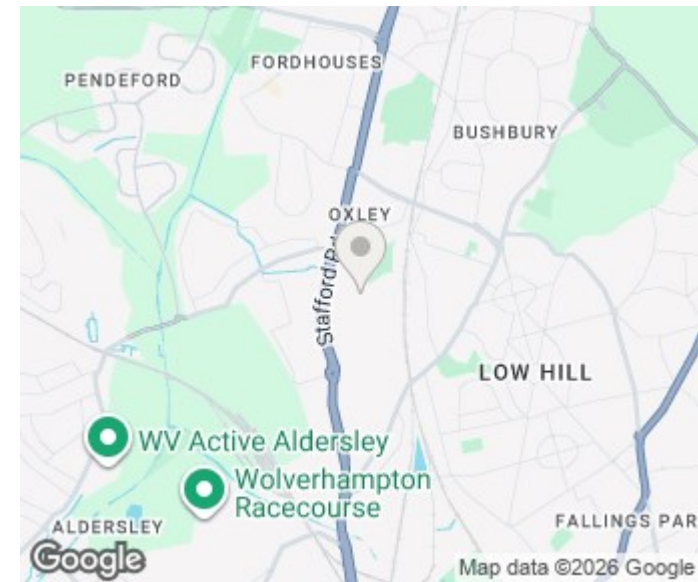
76 RANGER DRIVE



Ground Floor



First Floor



Energy Efficiency Rating		
	Current	Potential
Very energy efficient - lower running costs		
(92 plus) A		93
(81-91) B		
(69-80) C	80	
(55-68) D		
(39-54) E		
(21-38) F		
(1-20) G		
Not energy efficient - higher running costs		
England & Wales	EU Directive 2002/91/EC	



Sanders, Wright & Freeman - Sales 01902 575555
 13 Waterloo Road enquiries@swfestateagents.co.uk
 Wolverhampton www.swfestateagents.co.uk
 West Midlands
 WV1 4DJ

Agents Note: Whilst every care has been taken to prepare these particulars, they are for guidance purposes only. All measurements are approximate and are for general guidance purposes only and whilst every care has been taken to ensure their accuracy, they should not be relied upon and potential buyers/tenants are advised to recheck the measurements