



Ranelagh Gardens, SW6

£1,150,000

Set within the prestigious, gated riverside enclave of Rivermead Court, this stunning three bedroom, two bathroom apartment has been meticulously reimagined with bespoke interiors that blend 1930s character with contemporary luxury.

Rivermead Court is situated at the gate of the world famous Hurlingham Club. There are numerous boutiques, cafes and restaurants along New Kings Road, as well as across the river on Putney High Street.

Features

- Three Bedrooms
- Two Bathrooms
- 24 Hour Porter
- Riverside Development
- Bespoke Renovation
- Communal Gardens
- Hurlingham Park



Ranelagh Gardens, SW6

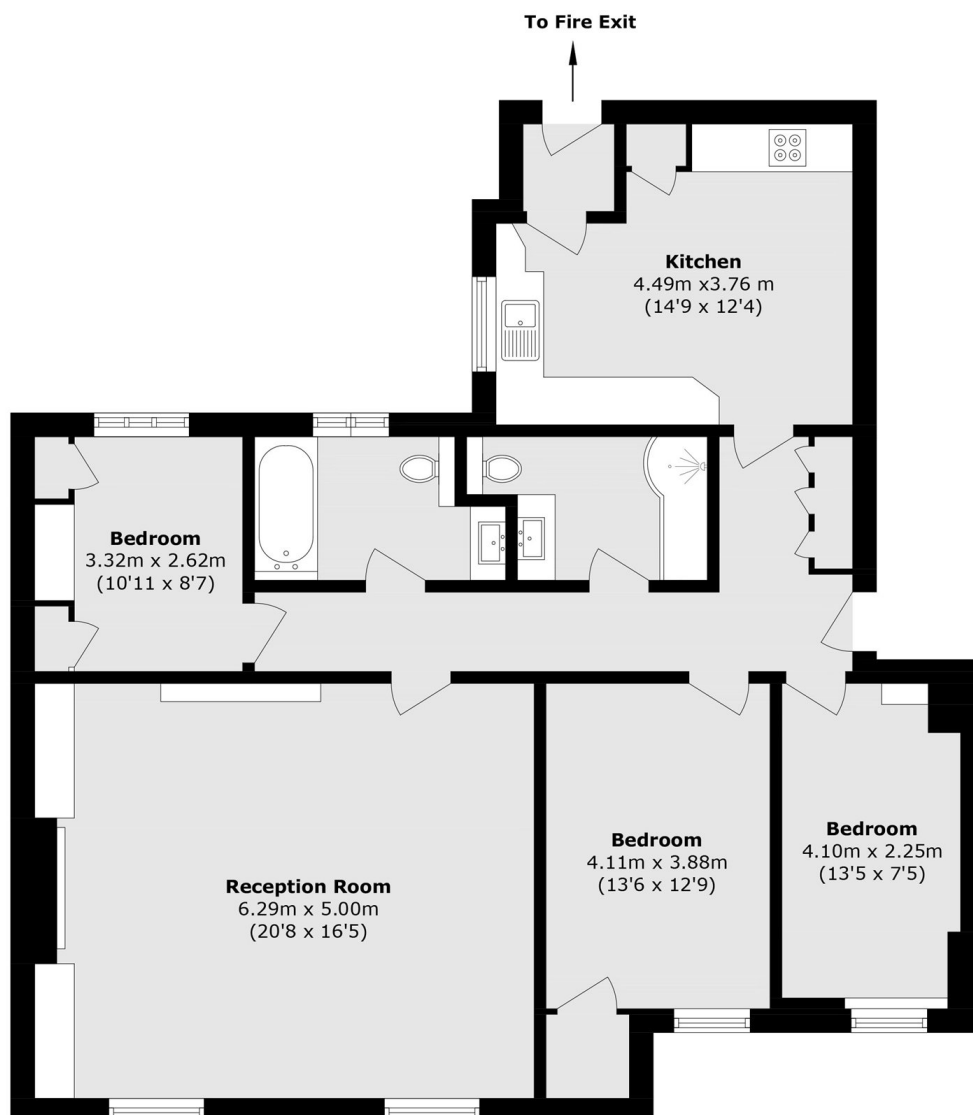
Unlike many standard units in the block, this residence offers a turn-key lifestyle for the discerning buyer who values custom made to measure joinery and thoughtful design.

The stand out reception room has large windows bathing the room in natural light, a remarkable unique fireplace, hidden storage and plenty of space which is perfect for entertaining. There is a fully fitted large separate kitchen/breakfast room, the table is specifically crafted for the space and available to purchase.

Outside, beautifully landscaped communal gardens lead directly down to the River Thames, providing an exclusive link to the water. There is also a lift in the building and parking available with the development.



Ranelagh Gardens, London, SW6



Second Floor

Total (approx.): 105.5 sq. m (1135.6 sq. ft)