



Highbury Barn Stoughton Road, Wedmore, BS28 4PV

Offers In Excess Of £875,000



Offers In Excess Of £875,000

Highbury Barn Stoughton Road

Wedmore, BS28 4PW

- Large, mature gardens with courtyard areas and outdoor space
- Stunning oak-framed conservatory opening onto the garden
- Four generously sized bedrooms and two bath/shower rooms
- Desirable village location near Wedmore, with countryside and Mendips on the doorstep
- Fabulous open-plan kitchen, dining, and living space
- Separate cosy sitting room, cloakroom, and utility
- Gravelled driveway providing off-road parking and double garage/carport
- No onward chain

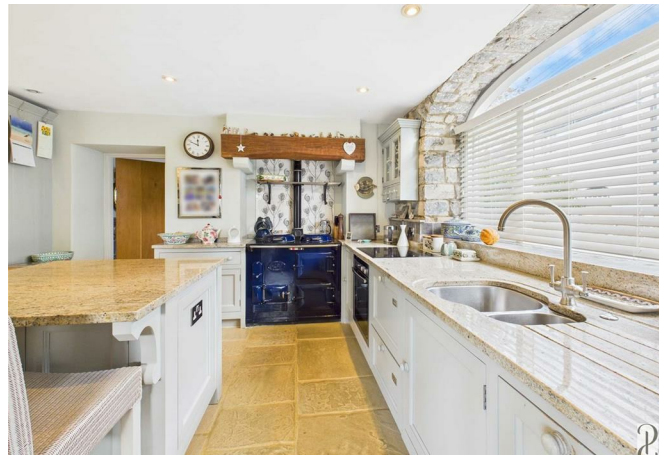
Highbury Barn comes to the market for the first time in over 50 years - a rare opportunity to acquire a truly special period home that blends character, space and style in equal measure. The property has been beautifully presented and thoughtfully styled throughout, offering generous proportions and a wonderful sense of warmth.



Description

Location

Key information





Directions





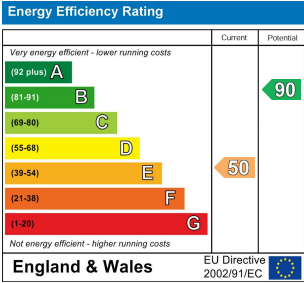
Floor Plans



Location Map



Energy Performance Graph



Viewing

Please contact our Bath Office on 01225 904999 if you wish to arrange a viewing appointment for this property or require further information.

The particulars are set out as a general outline only for the guidance of intended purchasers or lessees, and do not constitute, any part of a contract. Nothing in these particulars shall be deemed to be a statement that the property is in good structural condition or otherwise nor that any of the services, appliances, equipment or facilities are in good working order. Purchasers should satisfy themselves of this prior to purchasing.