

**Finborough Road, SW10**

**£750,000**

**Dexters**



## Finborough Road, SW10

A garden oasis just moments from Fulham Road. The property offers its own large, split-level garden perfect for entertaining. Well presented throughout, this fantastic two bedroom flat offers a bright and inspiring living space with great investment potential. The property features a spacious open-plan reception room and kitchen, ideal for both everyday living and entertaining. There is a generously sized master bedroom and second bedroom overlooking the lovely rear garden. An excellent home for first-time buyers, downsizers, or investors alike.

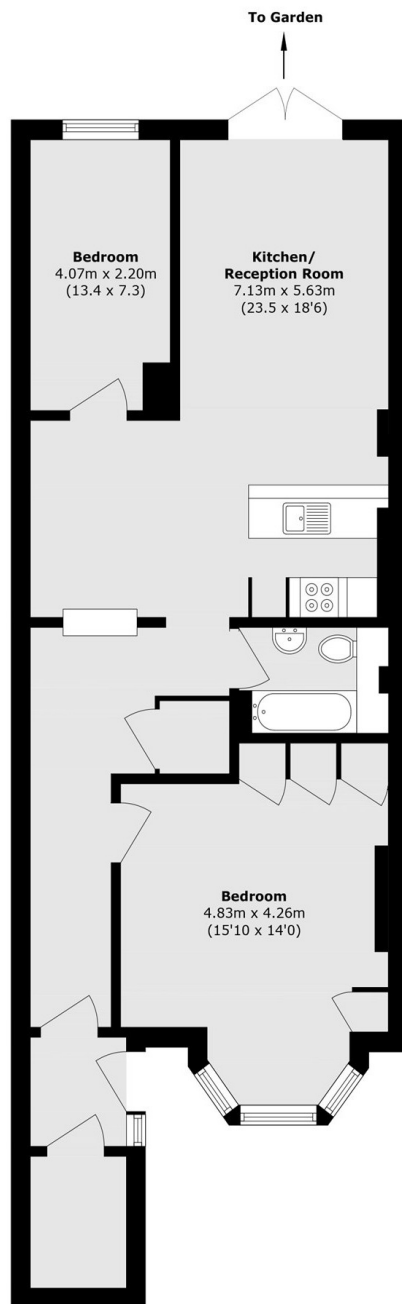
Only a short walk away from the attractions of the Boltons area and the historic Kings Road, it is perfectly situated nearby cafes, restaurants and shops, including a convenient 24-hour supermarket, as well as being closely connected to multiple transport links. This property is convenient for those looking to remain close to a range of different primary schools.

### Features

- Two Bedrooms
- No Ongoing Chain
- Close Proximity To Amenities
- Large Private Garden
- Close To Tube Stations
- Immaculate Finish



# Finborough Road, London, SW10



Total area (approx.): 83.3 sq. m (896.6 sq. ft)