



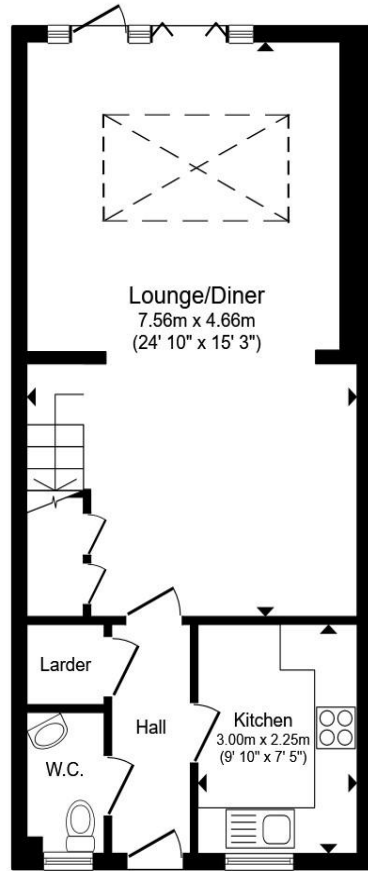
Hellen Way, Watford, WD19 6HW

welcome to

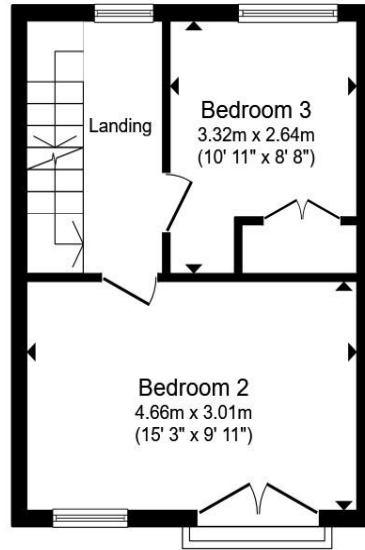
Hellen Way, Watford

A beautifully presented four bedroom terraced townhouse arranged over three floors, tucked away in a quiet cul-de-sac and offering stylish open-plan living, a private rear garden and a driveway providing parking for two vehicles, ideally located close to excellent schools and transport links.

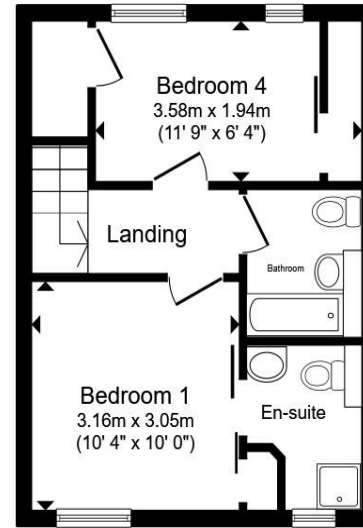




Ground Floor



First Floor



Second Floor

Entrance

Wc

Larder

Kitchen

9' 10" x 7' 5" (3.00m x 2.26m)

Lounge/Diner

24' 10" x 15' 3" (7.57m x 4.65m)

Bedroom 1

10' 4" x 10' (3.15m x 3.05m)

En Suite

Bedroom 2

15' 3" x 9' 11" (4.65m x 3.02m)

Bedroom 3

10' 11" x 8' 8" (3.33m x 2.64m)

Bedroom 4

11' 9" x 6' 4" (3.58m x 1.93m)

Bathroom

Total floor area 109.6 m² (1,180 sq.ft.) approx

This floor plan is for illustrative purposes only. It is not drawn to scale. Any measurements, floor areas (including any total floor area), openings and orientation are approximate. No details are guaranteed, they cannot be relied upon for any purpose and they do not form part of any agreement. No liability is taken for any error, omission or misstatement. A party must rely upon its own inspection(s). Powered by www.propertybox.io



welcome to

Hellen Way, Watford

- Four Bedroom Terraced Townhouse Arranged Over Three Floors with Driveway Parking
- Impressive Open-Plan Living/Dining Area with Feature Skylight
- Bi-Folding Doors Leading to a Charming Rear Garden
- Contemporary Fitted Kitchen with Modern Finishes
- Spacious Principal Bedroom with En-Suite Shower Room

Tenure: Freehold EPC Rating: C

Council Tax Band: D

£625,000



Please note the marker reflects the postcode not the actual property

view this property online [brownandmerry.co.uk/Property/WAF104727](https://www.brownandmerry.co.uk/Property/WAF104727)



Property Ref:
WAF104727 - 0003

1. MONEY LAUNDERING REGULATIONS Intending purchasers will be asked to produce identification documentation at a later stage and we would ask for your co-operation in order that there is no delay in agreeing the sale. 2. These particulars do not constitute part or all of an offer or contract. 3. The measurements indicated are supplied for guidance only and as such must be considered incorrect. Potential buyers are advised to recheck measurements before committing to any expense. 4. We have not tested any apparatus, equipment, fixtures or services and it is in the buyers interest to check the working condition of any appliances. 5. Where an EPC, or a Home Report (Scotland only) is held for this property, it is available for inspection at the branch by appointment. If you require a printed version of a Home Report, you will need to pay a reasonable production charge reflecting printing and other costs. 6. We are not able to offer an opinion either written or verbal on the content of these reports and this must be obtained from your legal representative. 7. Whilst we take care in preparing these reports, a buyer should ensure that his/her legal representative confirms as soon as possible all matters relating to title including the extent and boundaries of the property and other important matters before exchange of contracts.

Brown & Merry is a trading name of Sequence (UK) Limited which is registered in England and Wales under company number 4268443, Registered Office is Cumbria House, 16-20 Hockliffe Street, Leighton Buzzard, Bedfordshire, LU7 1GN. VAT Registration Number is 500 2481 05.


brown & merry



01923 248861



watford@brownandmerry.co.uk



104 The Parade, WATFORD, Hertfordshire,
WD17 1AW



[brownandmerry.co.uk](https://www.brownandmerry.co.uk)