



St. Mark Street

London, E1

Asking Price £625,000

A spacious first floor two bedroom apartment offering elegant living, a bright reception room, separate kitchen, communal roof terrace and superb access to Aldgate, Whitechapel and Spitalfields.

CHESTERTONS



St. Mark Street

London, E1

- Spacious City fringe apartment
- Bright and spacious reception room
- Two double bedrooms
- Separate kitchen
- Communal roof terrace offering City views
- Excellent transport links
- Superb location



Set within a well maintained modern development on St. Mark Street E1, the property provides a generous sense of scale throughout. A welcoming entrance hall leads into an elegant reception room that is ideal for both sophisticated entertaining and relaxed daily living. A separate, thoughtfully designed kitchen sits just off the main living area and adds to the practical flow of the home. The principal bedroom features integrated wardrobes and a calm, private atmosphere. The second bedroom is well proportioned and offers excellent versatility, whether used as a guest room, home office or creative workspace. A centrally placed family bathroom completes the layout. Residents benefit from access to a communal roof terrace with impressive views across the City skyline, creating a memorable setting for unwinding above the surrounding streets.

The location is superb, positioned moments from Aldgate East and Aldgate stations, with Whitechapel's Crossrail connection and Liverpool Street also within easy reach. Brick Lane and Spitalfields are close by, offering an eclectic mix of boutiques, galleries, cafes and highly regarded restaurants. This is an exceptional home that combines space, style and convenience, perfectly suited for those seeking premium living in one of East London's most dynamic neighbourhoods. The vendor is in the process of extending the lease to 999 years.

Tenure: Leasehold 95 years 6 months
Service Charge: £4574.6 pa
Ground Rent: £150 pa
Local Authority: Tower Hamlets
Council Tax Band: E

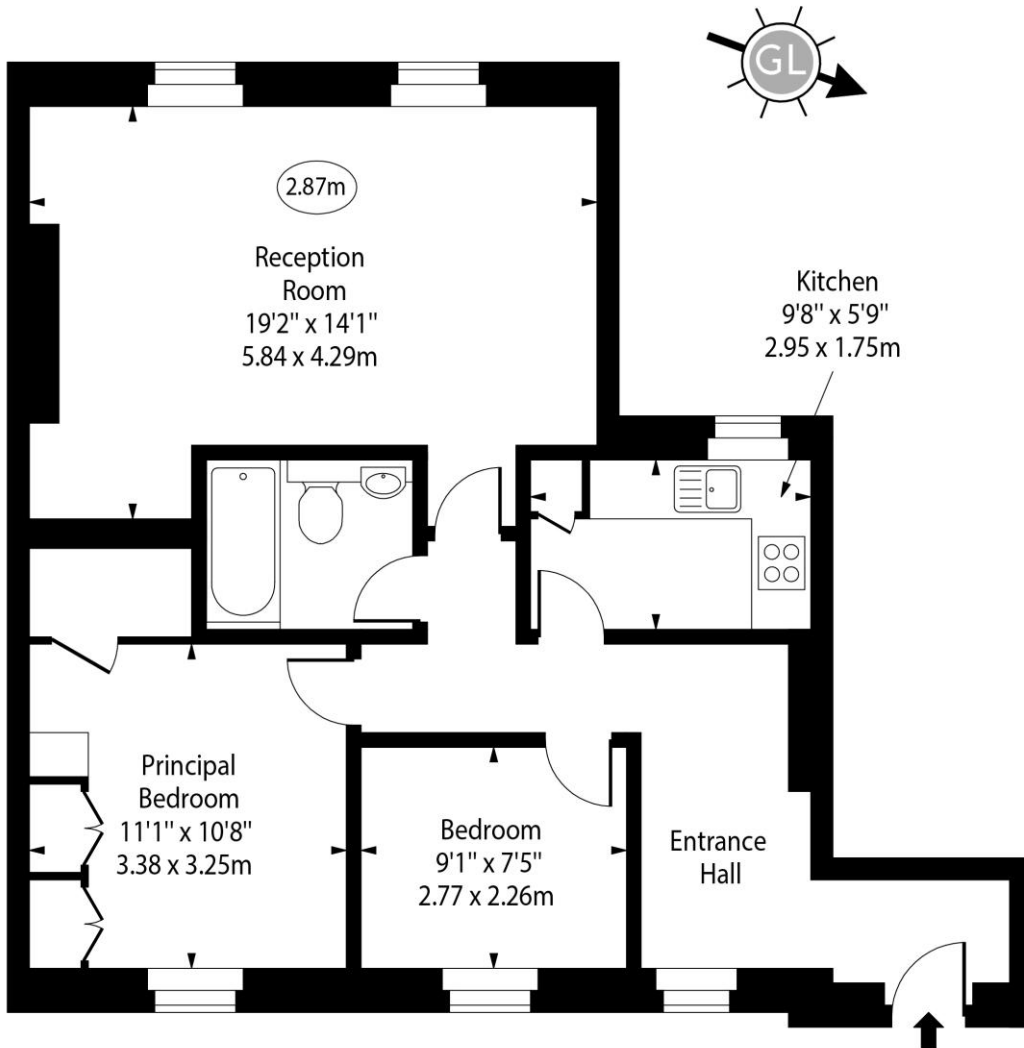
Score	Energy rating	Current	Potential
92+	A		
81-91	B		
69-80	C	77 C	81 B
55-68	D		
39-54	E		
21-38	F		
1-20	G		

Chestertons Tower Bridge Sales

220 Tower Bridge Road
 Tower Bridge
 London
 SE1 2UP
 towerbridge@chestertons.co.uk
 020 7357 7999
 chestertons.co.uk

St. Mark Street, E1

○ - Ceiling Height



First Floor

Approx Gross Internal Area 710 Sq Ft - 65.96 Sq M

Every attempt has been made to ensure the accuracy of the floor plan shown. However, all measurements, fixtures, fittings, and data shown are approximate interpretations and for illustrative purposes only. Measured according to the RICS. Not To Scale.

www.goldlens.co.uk
Ref. No. 031189K