



THE AVENUE, NW6

£399,999

Chain Free
Modern
Communal gardens
Concierge
Wooden Floors
Gym

@marshandparsons
marshandparsons.co.uk

MARSH &
PARSONS



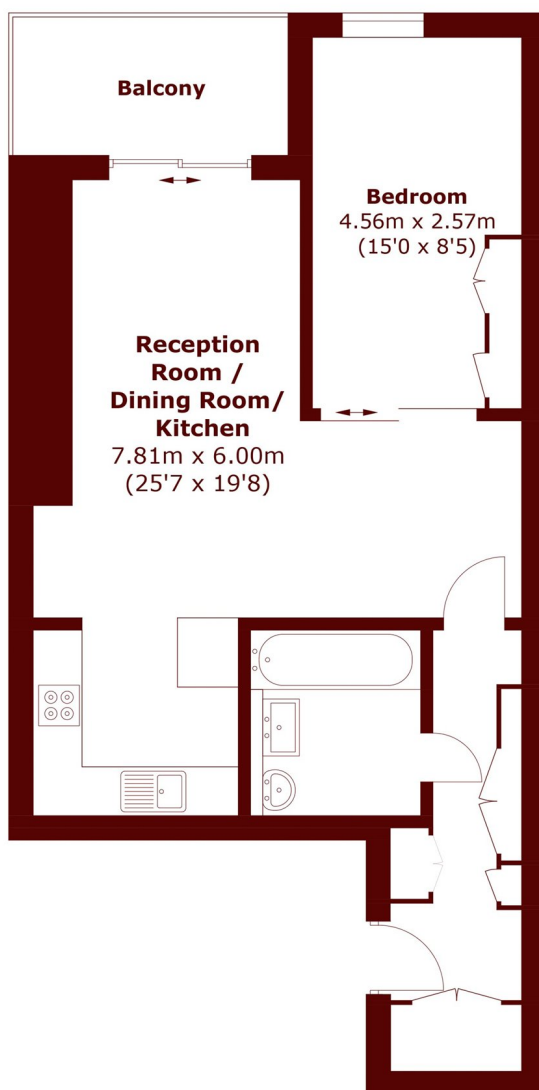
ABOUT THE PROPERTY

This spectacular upper floor one bedroom apartment resides in a modern, gated development with lift access, gym and concierge. The property has been finished to the highest standard and consists of a spacious open plan kitchen/reception room with fitted appliances and doors leading to a private balcony. A large modern bathroom, bright double bedroom with built-in storage.

Excellently located, The Avenue development is just a stone's throw from Brondesbury Park London Overground Station and Kilburn Jubilee. Queen's Park is on your doorstep offering beautiful green space and an abundance of local shops and restaurants as well as a popular Farmers' Market.



STEP INSIDE THE AVENUE



Total area (approx.): 54.9 sq. m (590.9 sq. ft)
Balcony : 5.7 sq. m (61.3 sq. ft)

Queen's Park
020 7624 4513

Energy Rating: B We aim to make our particulars both accurate and reliable. However, they are not guaranteed; nor do they form part of an offer or contract. If you require clarification on any points then please contact us, especially if you're traveling some distance to view. Please note that appliances and heating systems have not been tested and therefore no warranties can be given as to their good working order

**MARSH &
PARSONS**