



Aynsley Court, Union Road

Shirley, Solihull

- A Well Maintained Ground Floor Retirement Apartment
- Fitted Kitchen & Shower Room
- Two Good Size Bedrooms
- Lounge/Diner & No Upward Chain

£112,500

Current EPC Rating - C
Current Council Tax Band - D





Property Description

A ground floor retirement apartment benefitting from no upward chain, careline security system, two good size bedrooms, lounge/diner, fitted kitchen and shower room. There are an array of communal facilities including a house manager, residents lounge, laundry, guest suite, well maintained communal gardens and residents parking

The property is ideally situated to all local amenities including a doctors surgery, pharmacy, dentist, opticians, hairdressers and café all within a 2 minute walk. For shopping, just minutes away you'll find M&S food hall, Sainsburys' and ASDA supermarkets, as well as Sears Retail Park and Parkgate with an array of popular major retail names and eateries. Shirley high street also has a good variety of independently run outlets and a good choice of culturally diverse dining restaurants. Residents are particularly served well by regular bus and train services and easy access to junction 4 of the M42.



Rooms & Measurements

Lounge/Diner 5.4m x 3.4m (17'8" x 11'1")

Fitted Kitchen 2.6m x 1.7m (8'6" x 5'6")

Bedroom One 5.3m x 2.7m (17'4" x 8'10")

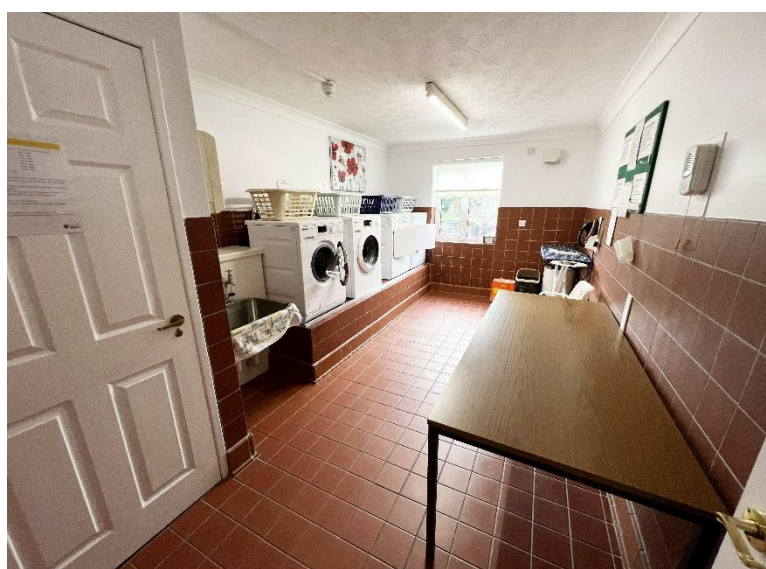
Bedroom Two 3.2m max x 2.7m (10'5" max x 8'10")

Shower Room 2m x 1.6m (6'6" x 5'2")

Tenure

We are advised by the vendor that the property is leasehold with approx. 92 years remaining on the lease, a service charge of approx. £5,600 per annum and a ground rent of approx. £560 per annum but are awaiting confirmation from the vendor's solicitor. We would strongly advise all interested parties to obtain verification through their own solicitor or legal representative.

EPC supplied by Vendor. Current council tax band - D



316 Stratford Road
Shirley
Solihull
B90 3DN

www.smart-homes.co.uk
0121 744 4144

Agents Note: Whilst every care has been taken to prepare these particulars, they are for guidance purposes only. We believe all information to be correct from the day of marketing however, we advise and recommend that your conveyancer and or surveyor verifies all information supplied. All measurements are approximate and for general guidance purposes only and whilst every care has been taken to ensure their accuracy, they should not be relied upon and potential buyers are advised to recheck the measurements.