



## Albury Close, TW12

£2,595 Per calendar month

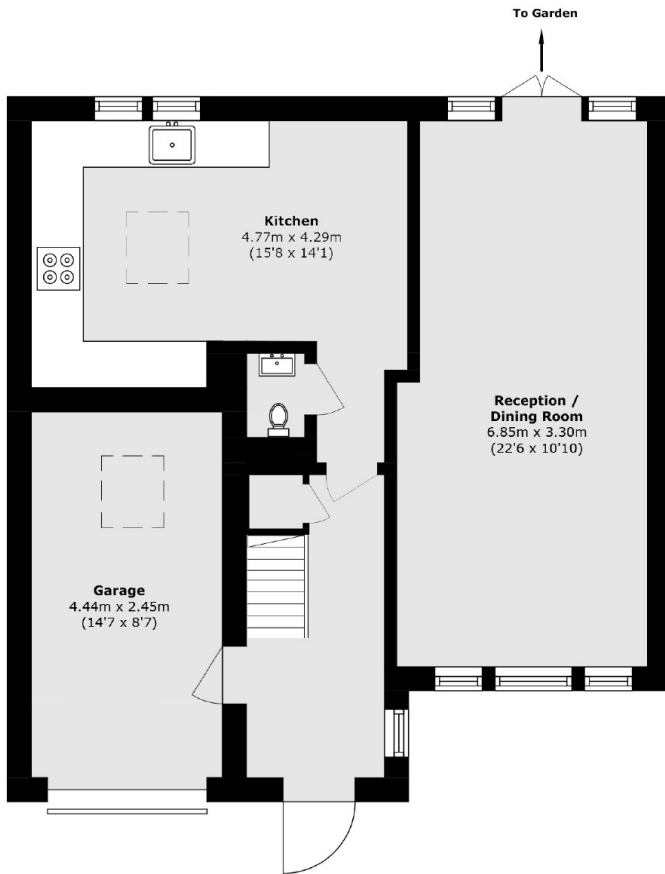
This two bedroom house is presented in fantastic condition, with a large reception room and a separate eat in kitchen. Close to great schools and a short walk from Hampton Village this property is perfect for a family wanting to rent long term.

Albury Close is a quiet cul-de-sac off Broad Lane, with local schools, Hampton Station and the Village a short walk away.

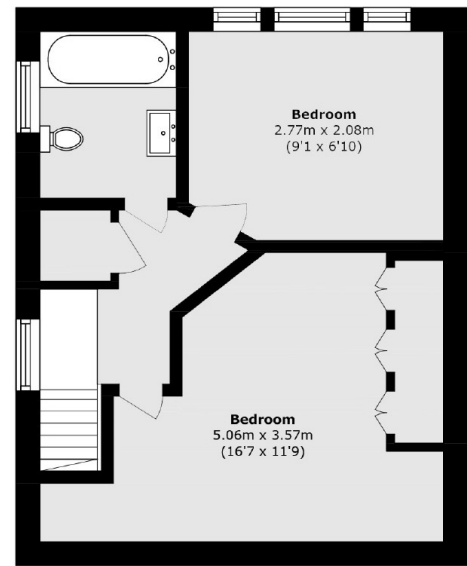
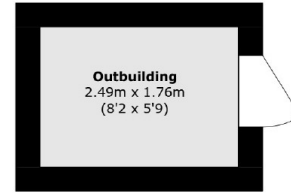
### Features

- Two Double Bedrooms
- Parquet Flooring
- Modern Bathroom
- Integral Garage
- Off-Street Parking
- Storage Shed

# Albury Close, Hampton, TW12



**Ground Floor**



**Second Floor**

Total area (approx.): 91.4 sq. m (983.8 sq. ft) (Including Garage)

Outbuilding (approx.): 4.3 sq. m (46.2 sq. ft)