



A delightful four bedroom chalet bungalow  
Hillside Road, Northwood, Middlesex HA6 1PZ

**ROBSONS**

**Asking Price: £3,000 pcm**

## **A delightful four bedroom chalet bungalow**

Hillside Road, Northwood, Middlesex HA6 1PZ

---

• DOUBLE RECEPTION ROOM • CONSERVATORY • MODERN FITTED KITCHEN • THREE BEDROOMS • FAMILY BATHROOM • MASTER BEDROOM AND BATHROOM TO FIRST FLOOR • REAR GARDEN • OFF STREET PARKING • GAS CENTRAL HEATING • UNFURNISHED

---

### **Description**

Fully redecorated throughout; this delightful detached four bedroom two bathroom chalet bungalow is conveniently positioned within close proximity of Northwood town centre. The property enjoys a spacious and light filled environment with modern finishes. Further benefits include a large rear garden and driveway providing off street parking.

\*An advance payment of one weeks rent is required to secure this property\*

### **Location**

Northwood provides a range of shopping facilities including Waitrose supermarket, a variety of restaurants and other amenities with the Metropolitan Line station providing access to Baker Street and the City. There is a plethora of state and private schooling together with a wide choice of recreational facilities, which include golf courses and fitness centres. The M1, M40 and M25 motorways are also accessible.

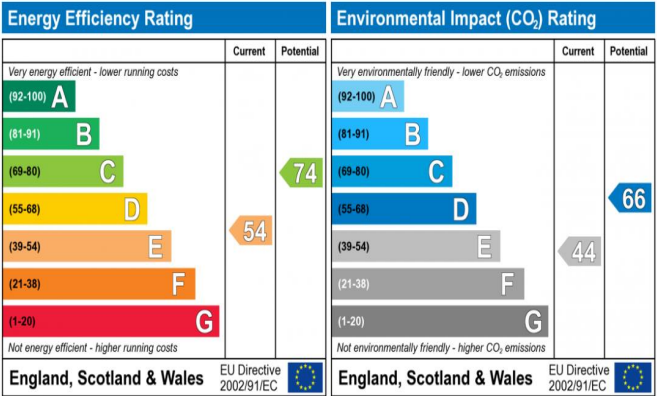






Additional Information

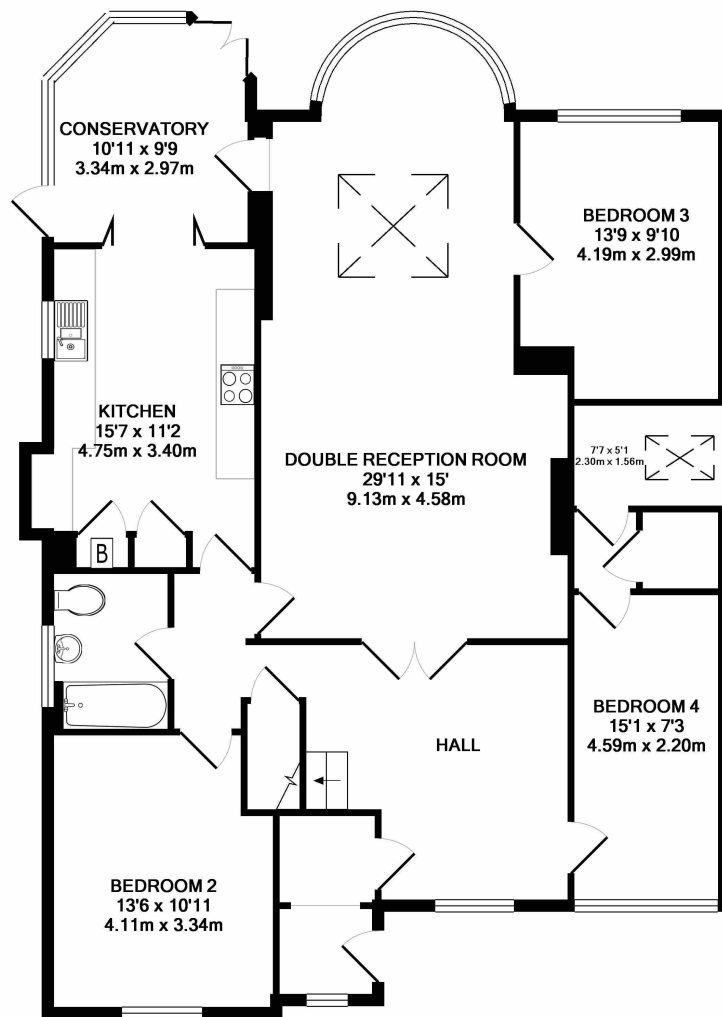
- Local Authority: London Borough of Hillingdon
- Council Tax Band: F
- Deposit Amount: £3,461.00
- Reservation Payment: One week's rent
- Energy Efficiency Rating: Band E
- Available Date: 12/02/2026



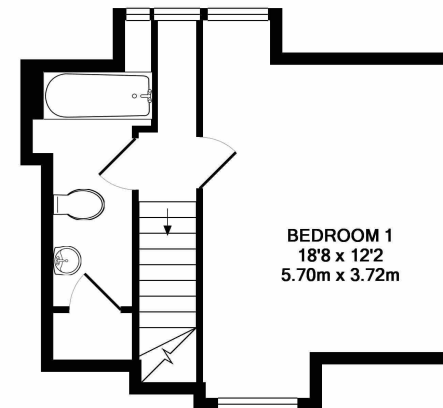
The energy efficiency rating is a measure of the overall efficiency of a home. The higher the rating the more energy efficient the home is and the lower the fuel bills will be.

The environmental impact rating is a measure of a home's impact on the environment in terms of carbon dioxide (CO<sub>2</sub>) emissions. The higher the rating the less impact it has on the environment.





GROUND FLOOR  
APPROX. FLOOR  
AREA 1365 SQ.FT.  
(126.8 SQ.M.)



1ST FLOOR  
APPROX. FLOOR  
AREA 316 SQ.FT.  
(29.4 SQ.M.)

TOTAL APPROX. FLOOR AREA 1681 SQ.FT. (156.2 SQ.M.)

Whilst every attempt has been made to ensure the accuracy of the floor plan contained here, measurements of doors, windows, rooms and any other items are approximate and no responsibility is taken for any error, omission, or mis-statement. This plan is for illustrative purposes only and should be used as such by any prospective purchaser. The services, systems and appliances shown have not been tested and no guarantee as to their operability or efficiency can be given  
Made with Metropix ©2017

