



## Manor Vale, TW8

£2,100 Per calendar month

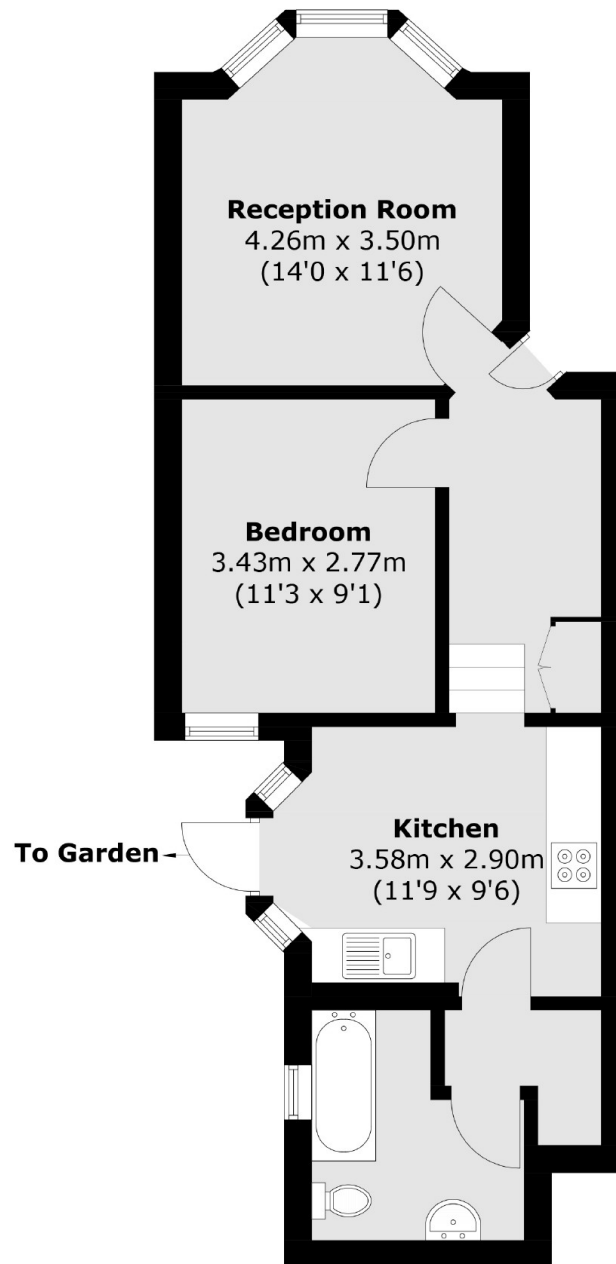
A very light and airy ground floor two large double bedroom purpose built flat located in a quiet backwater, just off Boston Manor Road. This appealing flat has a modern kitchen and bathroom and has recently been decorated.

Manor Vale is situated just off Boston Manor Road and is conveniently located just 0.25 miles from Brentford railway station and 0.60 miles from Boston Manor tube station (Piccadilly Line). The A4/M4 is easily accessible at less than 1/3 of a mile away.

### Features

- Two Bedrooms
- Separate Kitchen
- Wooden Floors
- Ground Floor
- Large Reception
- Recently Refurbished

# Manor Vale, Brentford, TW8



Total area (approx.): 46.7 sq. m (502.7 sq. ft)