



FREEHOLD

Apartment (EPC Rating: C)

0/2, 1720 SHETTLESTON ROAD, GLASGOW, G32 9AW

Offers over

£139,995

FEATURES

- Sympathetically restored flat
- Newly rewired
- Freshly painted interiors
- Easy access to Glasgow centre
- New heating system installed
- Modern kitchen and bathroom
- New flooring
- Close to local shops and pubs



SWEET HOME



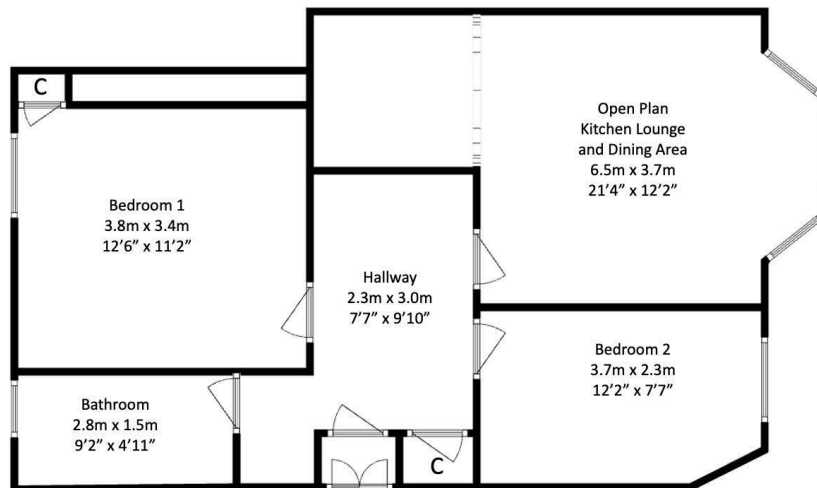
2 Bedroom Apartment located in Glasgow

Caroline Morrison of Sweet Home Scotland, welcomes you to this stunning ground floor apartment located on Shettleston Road in Glasgow. This beautifully restored flat offers a perfect blend of modern comfort and classic charm, making it an ideal home for individuals or couples seeking a stylish living space.

Spanning an impressive 678 square feet, the apartment features a spacious reception room that invites natural light, creating a warm and welcoming atmosphere. The well-appointed 2 bedroom property provides a peaceful retreat, while the newly fitted bathroom ensures a fresh and contemporary feel. The property has been thoughtfully upgraded with a new heating system and rewiring, ensuring both efficiency and safety.

The heart of the home is the brand new kitchen, which boasts modern appliances and ample storage, perfect for those who enjoy cooking and entertaining. The entire flat has been freshly painted and fitted with new flooring, providing a clean and inviting environment ready for you to move in.

Situated conveniently, this apartment offers easy access to Glasgow city centre, making it ideal for those who wish to enjoy the vibrant urban lifestyle. Local shops, restaurants, and public houses are



Call us on

01236 677500

sales@sweet-home.co.uk

<https://sweet-home.co.uk/>

Council Tax Band

B

Energy Efficiency Rating		Current	Potential
<i>Very energy efficient - lower running costs</i>			
(92 plus)	A		
(81-91)	B		
(69-80)	C	70	77
(55-68)	D		
(39-54)	E		
(21-38)	F		
(1-20)	G		
<i>Not energy efficient - higher running costs</i>			
Scotland		EU Directive 2002/91/EC	

Agents Note: Whilst every care has been taken to prepare these particulars, they are for guidance purposes only. All measurements are approximate and are for general guidance purposes only and whilst every care has been taken to ensure their accuracy, they should not be relied upon and potential buyers are advised to recheck the measurements.

