



Chelsea Cloisters, SW3

£625 Per week

A beautiful one bedroom apartment within a portered building. The entire property has been redesigned to a breathtaking standard, similar to a luxury hotel suite.

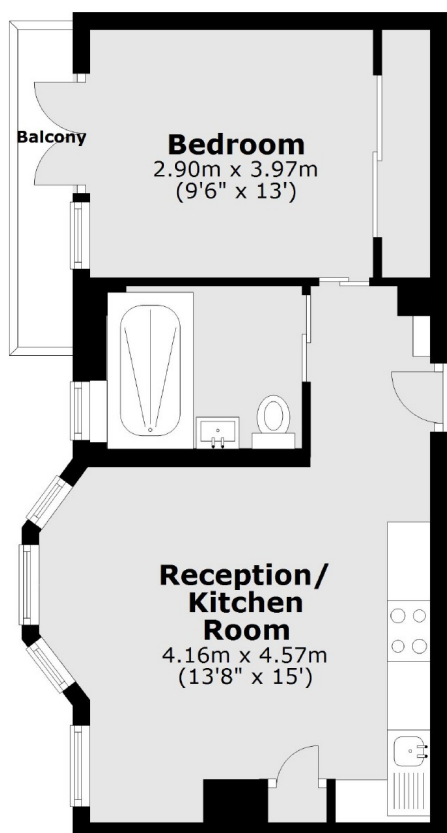
Chelsea Cloisters is located between Sloane Square and South Kensington tube stations. The world famous shops and restaurants the King's Road have to offer are also within walking distance.

Features

- Stunning Condition
- Porter
- One Bedroom
- Ample Storage
- Popular Location
- Balcony

Chelsea Cloisters, London, SW3

Third Floor



Main area: Approx. 38.0 sq. metres (408.9 sq. feet)
Plus balconies, approx. 2.7 sq. metres (29.6 sq. feet)