



BURNBURY ROAD, SW12

£750,000

- Two double bedrooms
- Share of freehold
- Ground floor
- No onward chain
- Private garden
- Energy rating: C





## ABOUT THE HOME

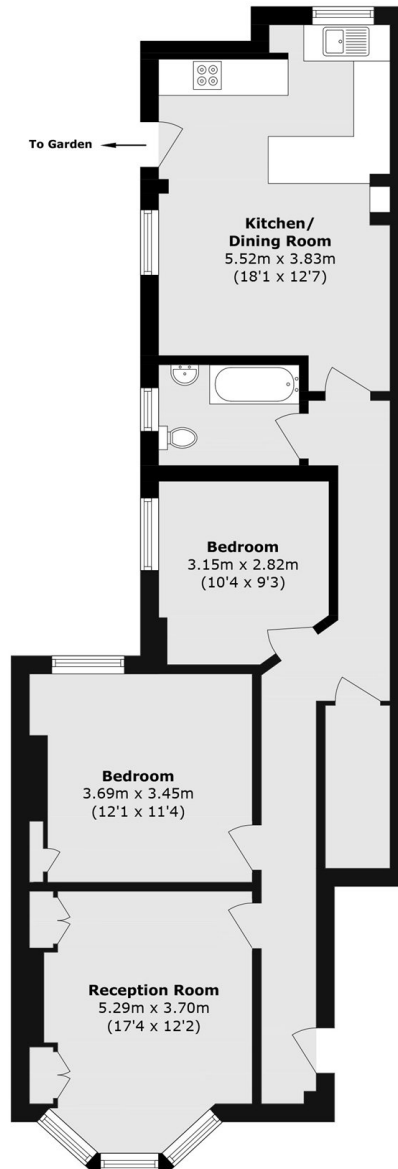
A beautifully presented ground floor two double bedroom Victorian maisonette in the Hyde Farm area in Balham. This property features a bright reception room to the front, two double bedrooms, a bathroom, and a large kitchen and dining space to the rear. From the kitchen is the access to the rear private garden, and further benefits include no onward chain and a share of the freehold.



Burnbury Road is a quiet residential street within the Hyde Farm estate in Balham. It is moments from Tooting Bec Common, as well as being just a short distance from Balham where there are a host of shops, bars and restaurants on offer. Balham mainline and underground stations are also close by.







Total area (approx.): 79.4 sq. m (854.6 sq. ft)

#### JACKSONS BALHAM

8-11 Balham Station Road,  
London, SW12 9SG  
Sales: 020 8675 6555  
Lettings: 020 8675 6565

Energy Rating: We aim to make our particulars both accurate and reliable. However they are not guaranteed; nor do they form part of an offer or contract. If you require clarification on any points then please contact us, especially if you're traveling some distance to view. Please note that appliances and heating systems have not been tested and therefore no warranties can be given as to their good working order.