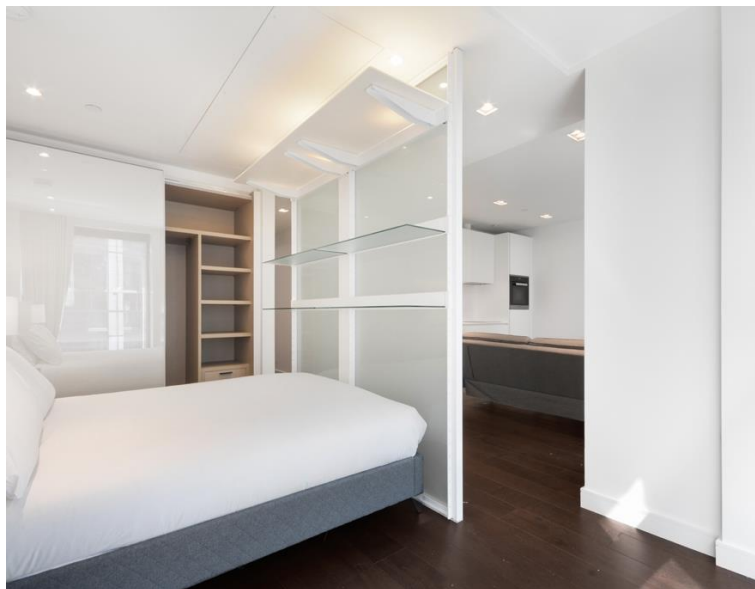


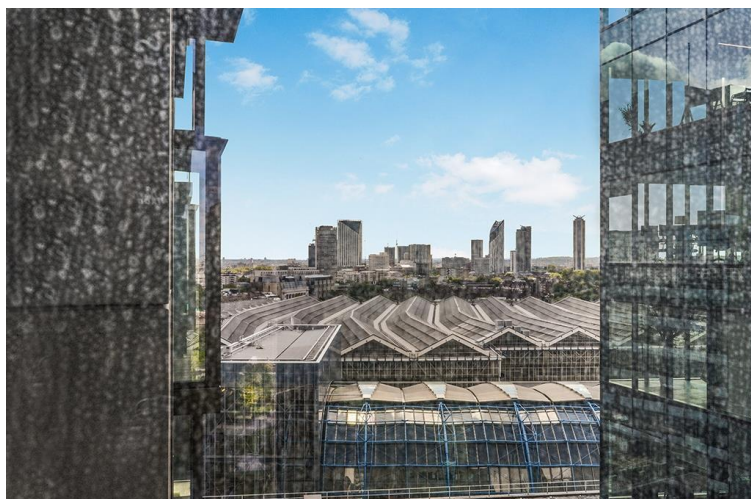


, London SE1

Price £695 per week - Furnished







Description

A 17th floor studio suite situated in 8 Casson Square, part of the luxury Southbank Place development in the heart of Waterloo, SE1. Offered on a fully furnished basis.

Situated on the 17th floor, this spacious studio apartment comprises a well sized living room with a fully fitted kitchen to include Miele and Siemens appliances, partitioned sleeping area with large fitted wardrobes, contemporary shower room, wood flooring, South facing views and excellent storage space. The property has a high specification throughout featuring comfort cooling, underfloor heating and smart home technology.

The development benefits from top of the range amenities which include an on-site gym, swimming pool with spa, exclusive resident's lounge and 24-hour concierge. 8 Casson Square is in the heart of Southbank and on the doorstep of Waterloo Station (0.2 miles) and moments from the iconic London Eye. The City of London is within easy reach as is London's famous West End.

We understand that cooling / heating is delivered via a communal system for which separate charges apply.

Rent is payable on a monthly basis and you may be required to pay more than a month's rent in advance, depending on your circumstances. You will be required to pay a 1 week holding deposit following a successful offer. Utility bills, council tax, telephone line and broadband are not included in the rent. As well as paying the rent, you may also be required to make some additional permitted payments. If your tenancy does not qualify as an AST, additional fees may apply. Please visit jll.co.uk/fees for details of fees which may be payable when renting a property.

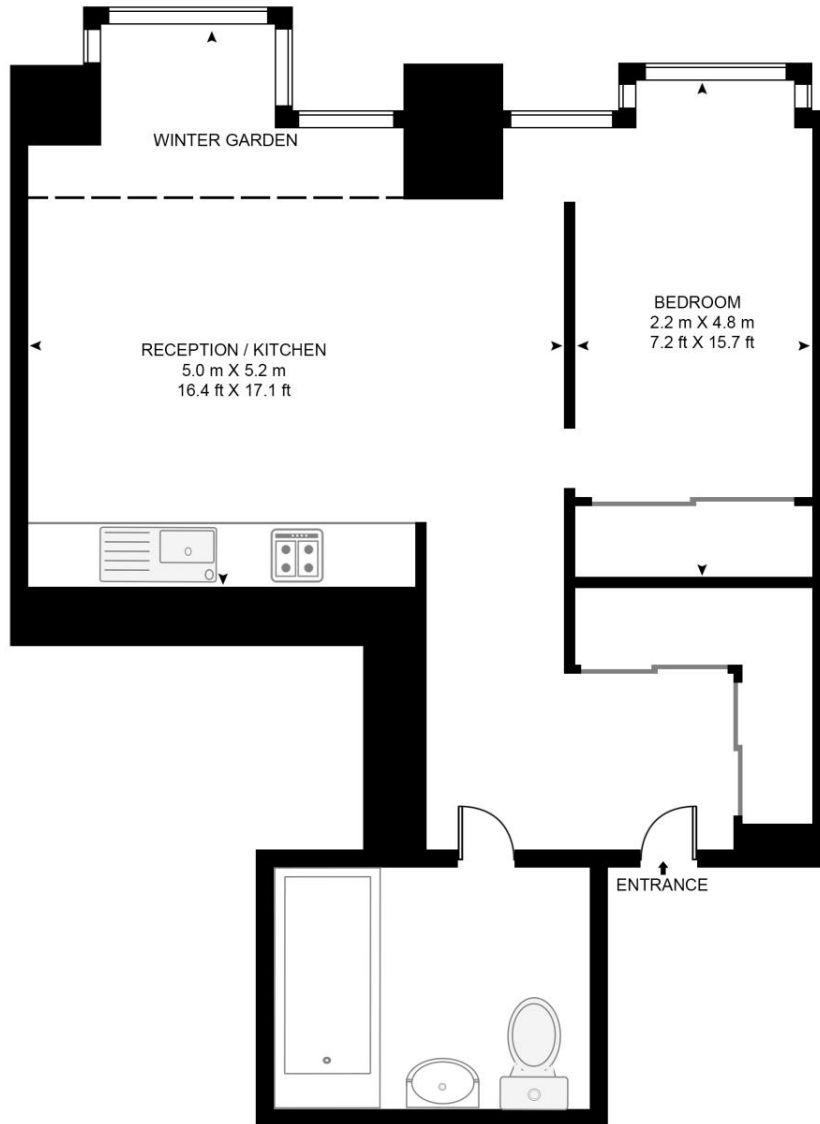
- Studio
- 1 Bathroom
- 17th Floor
- Winter Garden
- South facing views
- Luxury fitted kitchen with Miele appliances
- 24 hour concierge
- Approx. 508 sq ft (47.2 sq m)
- 0.2 mile from Waterloo Station
- Luxury residents facilities

Floorplan

508 sq ft | 47 sq m

8 CASSON SQUARE, LONDON, SE1 7GU

APPROXIMATE GROSS INTERNAL FLOOR AREA 508 SQ.FT (47.2 SQ.M)



SEVENTEENTH FLOOR

HDVA

This floor plan has been defined by the RICS Code of Measurement. This floor plan and all others are for approximate representative purposes only and upon usage is agreed to as such by the client.

WWW: hdvirtualart.com | TEL: 0203.974.1567 | EMAIL: info@hdvirtualart.com

City
25 Walbrook The Walbrook
Building,
London EC4N 8AF
+4420 7337 4000

Urban living, your way.

jll.co.uk/residential

© 2019 Jones Lang LaSalle IP, Inc. All rights reserved. All information contained herein is from sources deemed reliable; however, no representation or warranty is made to the accuracy thereof.

