



Galsworthy Road, KT2

£400,000

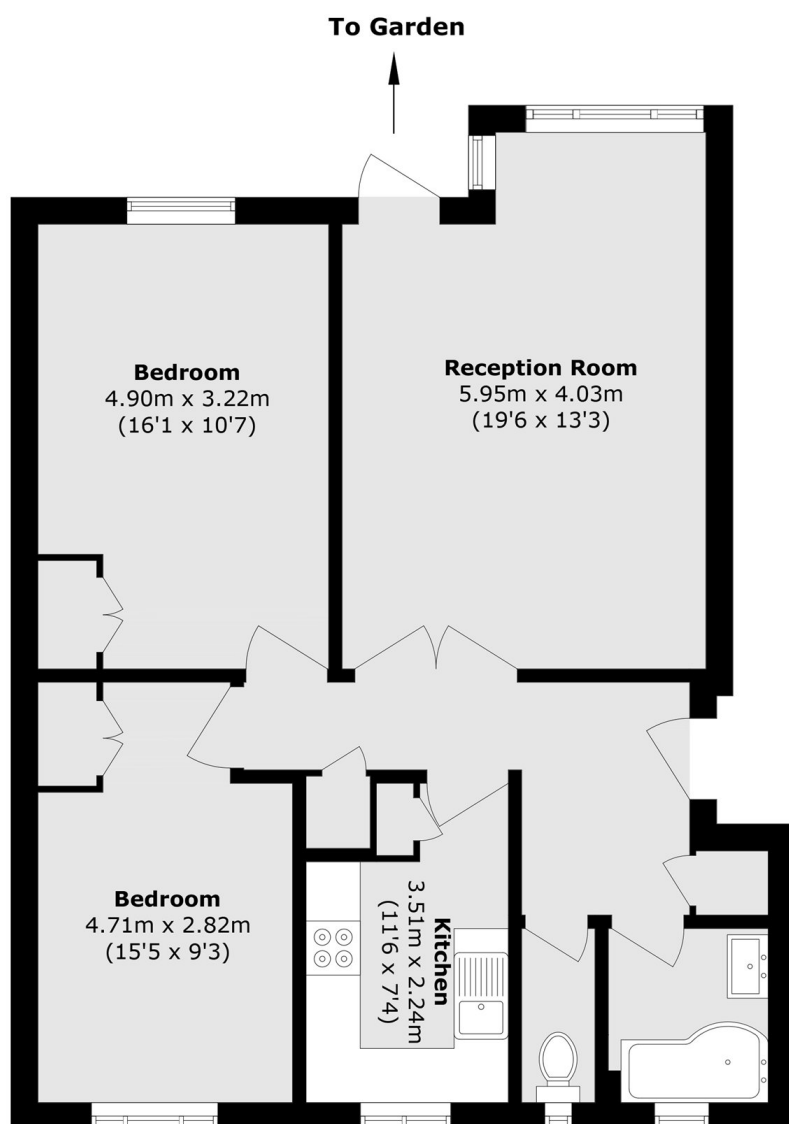
This exceptionally spacious ground floor flat offers two generous double bedrooms, a bright and welcoming reception room, a separate well appointed kitchen and a modern bathroom. The property also includes a private garage, communal gardens and parking.

Ideally positioned directly opposite Kingston Hospital and just a short walk from Norbiton Station, it offers superb access to local amenities and transport links.

Features

- Chain Free
- Ground Floor
- Private Garage
- Two Double Bedrooms
- Long Lease
- Low Service Charge

Galsworthy Road, Kingston Upon Thames, KT2



Total area (approx.): 76.1 sq. m (819.1 sq. ft)