



**POOLE
TOWNSEND**

Troy Gardens, Barrow-In-Furness, LA13 9NE

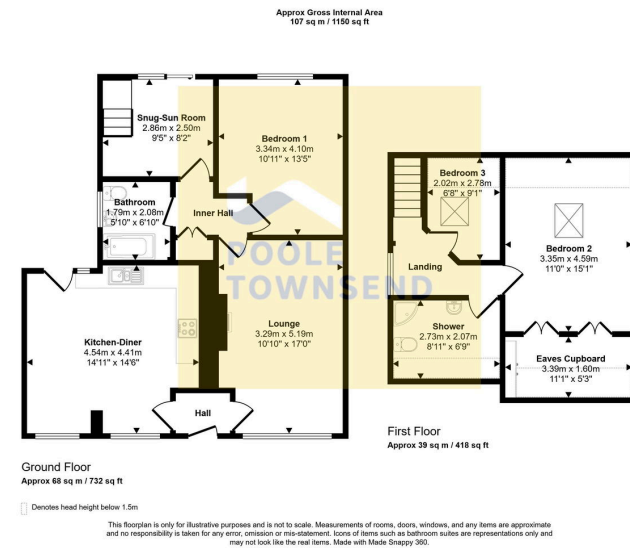
£269,950

3 2 1

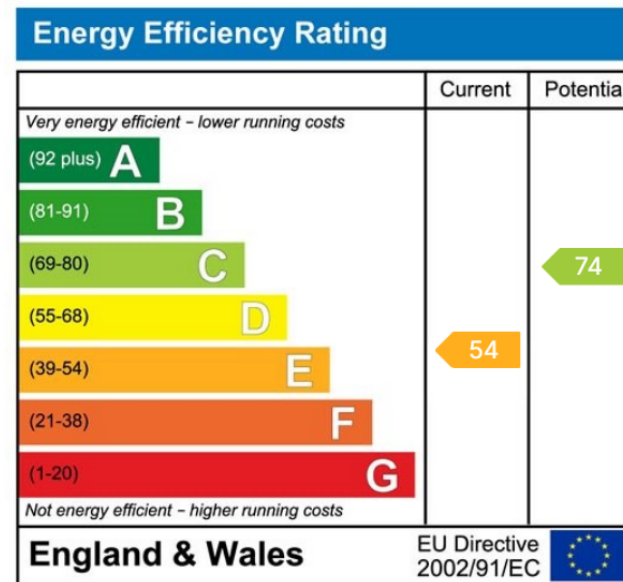


- 3 Bed Semi-Detached Bungalow
- Situated In A Quieter Location
- Spacious/Extended Kitchen
- Tasteful Décor And Modern Fittings
- Garden At Both Front And Rear
- Within A Lovely Cul-De-Sac
- Generous Sized Lounge
- A Snug/sun room With Sliding Patio Doors
- Private Driveway
- No Upper Chain





Located in a popular residential area within a lovely cul-de-sac, providing a quieter location with less passing traffic. The accommodation is nicely presented throughout, offering tasteful décor and modern fittings, The extended accommodation features a generous sized lounge, a spacious/ extended kitchen with dining area, GF bedroom, bathroom and a snug/sun room with a sliding patio door and stairs to two further bedrooms upstairs and a shower room. There is a private driveway, garden to the front and rear, a GCH system and DG throughout. No upper chain.



Visit us at
www.pooletownsend.co.uk
enquiries@pooletownsend.co.uk

We are open
 Monday – Friday 9.00 – 5.00
 Saturday 9.00 – 1.00

Barrow 01229 811811
 Ulverston 01229 588111
 Grange 015395 33316
 Kendal 01539 734455
 Milnthorpe 015395 62044