



Notting Hill Gate, W11

£799,950

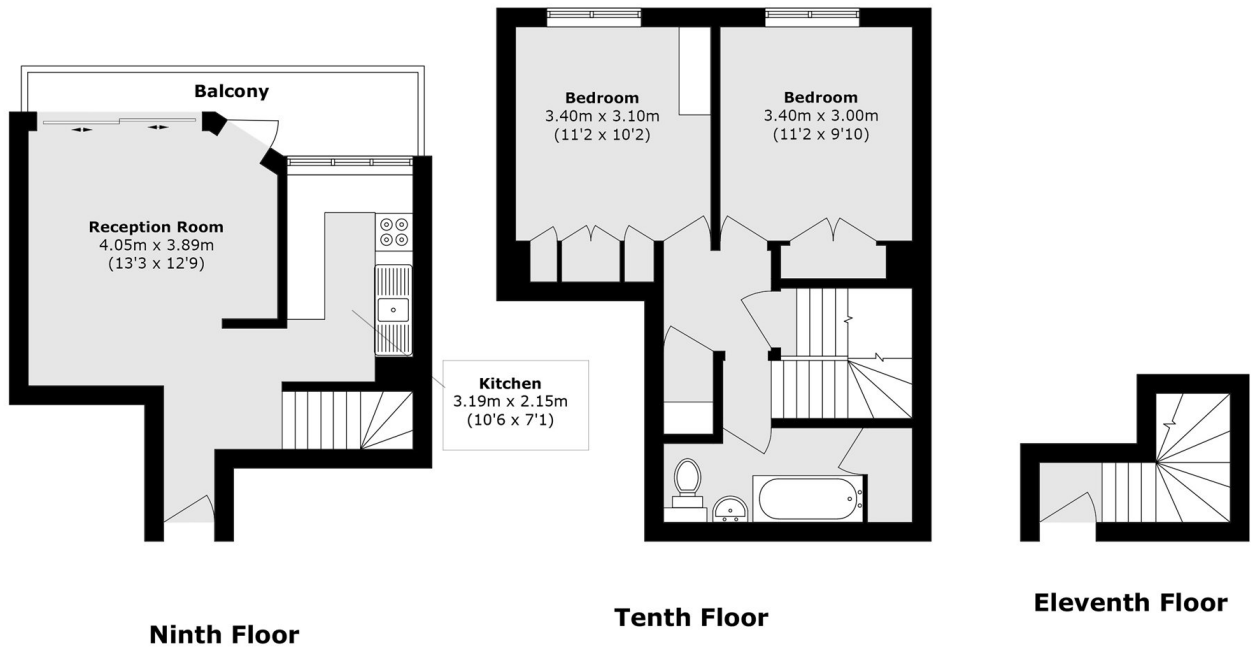
A two double bedroom, split level apartment on the ninth and tenth floor (with lift) of a portered, purpose built building. With a separate kitchen, private balcony and incredible views from all rooms, this is an ideal home for anyone looking for a convenient location. Please note service charge includes sinking fund.

Campden Hill Towers is in Notting Hill Gate, with plenty of shops, restaurants and transport links giving easy access across London to choose from. The green spaces of Holland Park and Hyde park are both within walking distance.

Features

- Two Double Bedrooms
- Split Level
- Separate Kitchen
- Private Balcony
- Incredible Views
- Central Notting Hill

Notting Hill Gate, London, W11



Total area (approx.): 72.5 sq. m (780.3 sq. ft)
Balcony area (approx.): 5.7 sq. m (61.3 sq. ft)