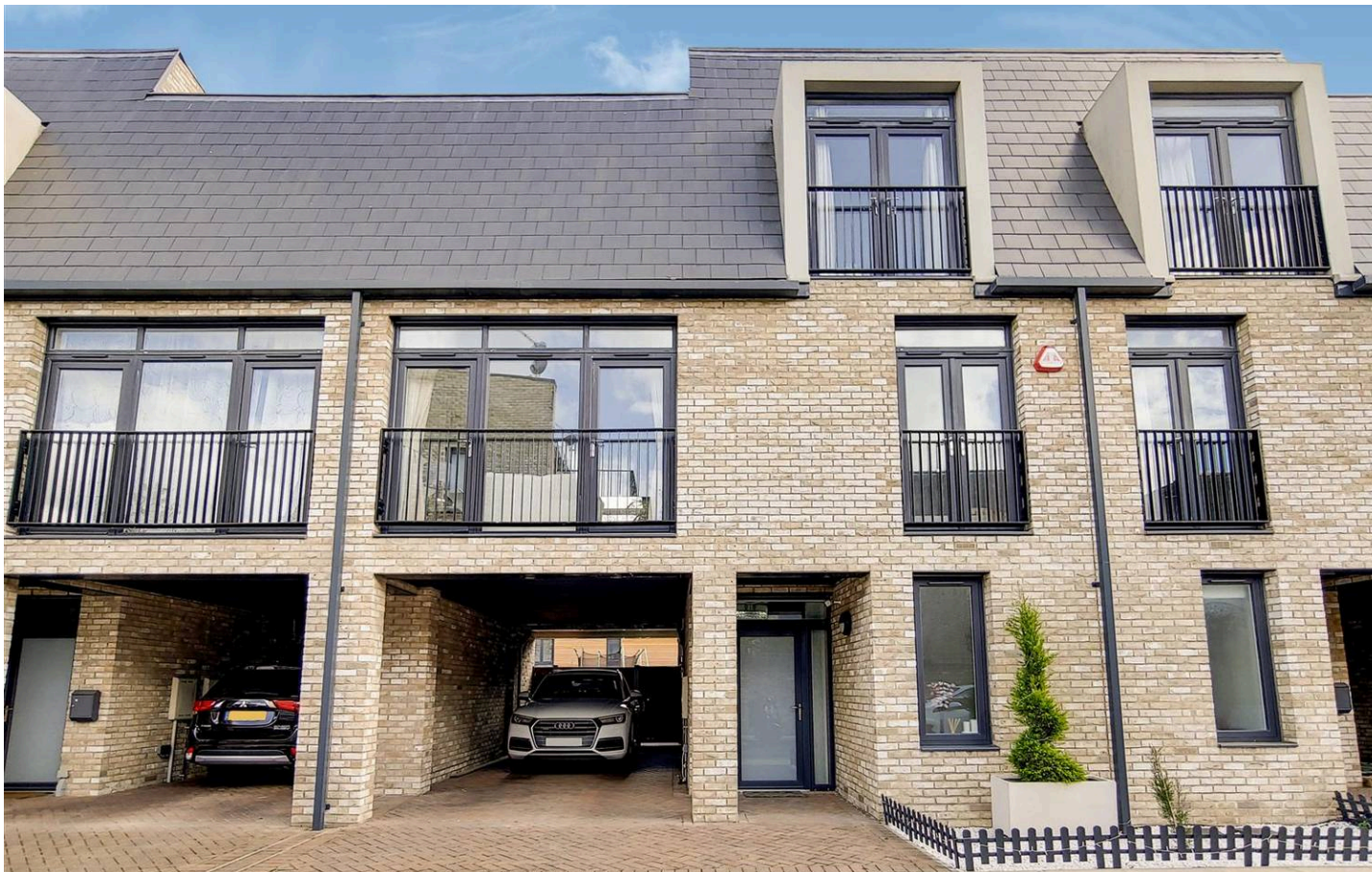




14 Dragons Way, Barnet  
Barnet

£3,500 pcm



## 14 Dragons Way

Barnet

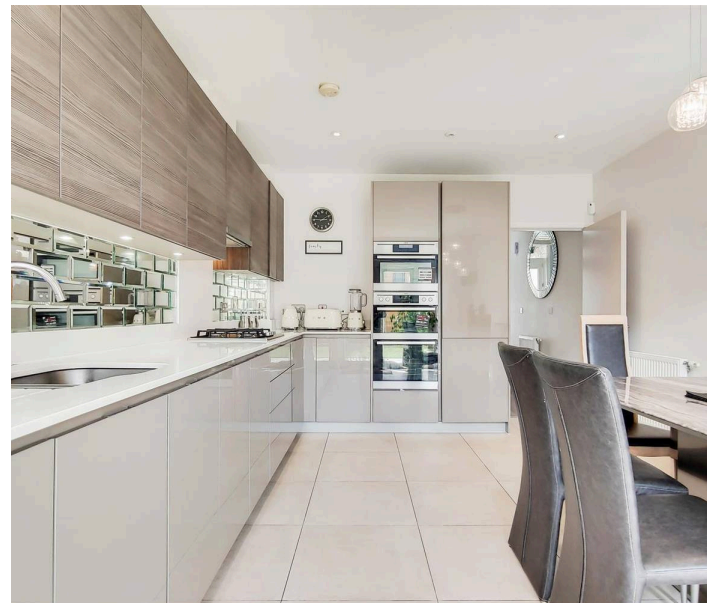
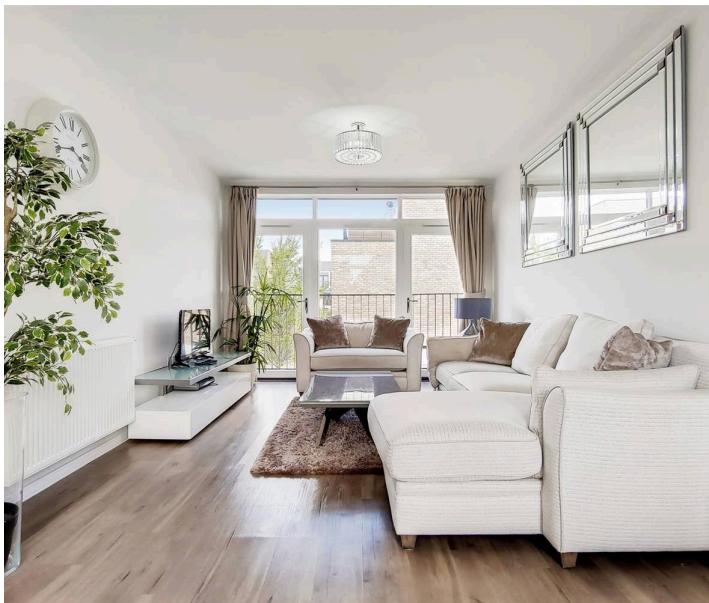
Finchleys are proud to offer this fabulous family home set in a modern development. This 4 double bedroom, 2 bathroom house well located for some of Barnet's highly regarded local schools, both primary and secondary.

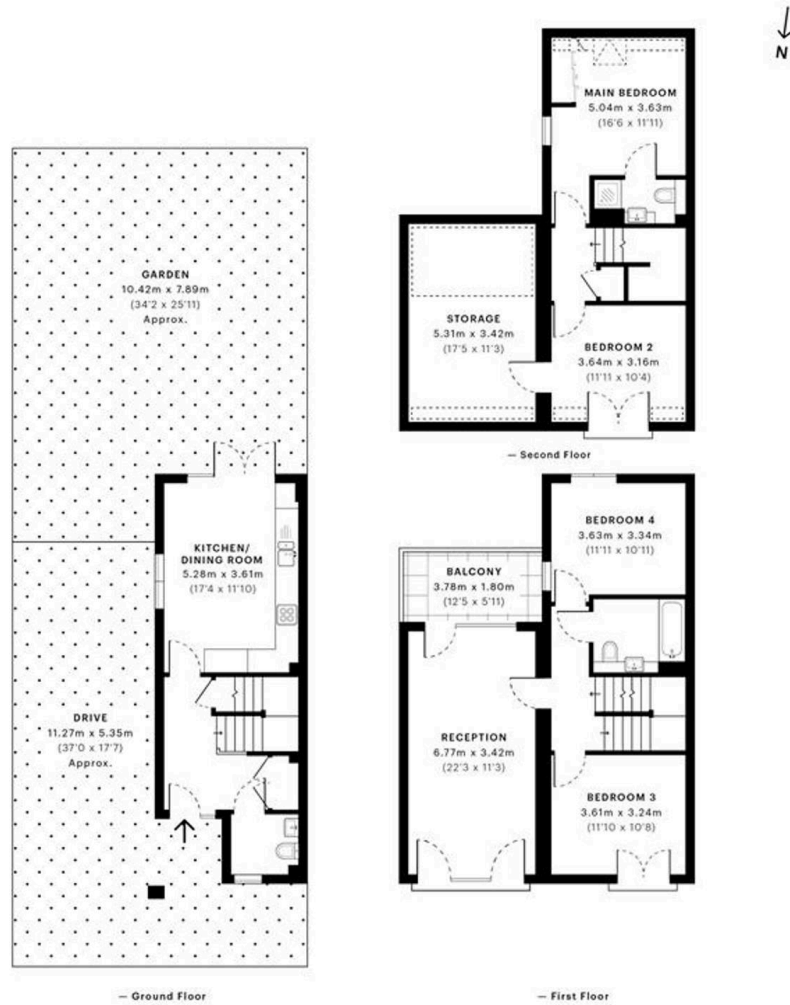
Extending to 1500 sq ft. the accommodation comprises of a great size reception leading onto a balcony, separate modern fitted kitchen/dining room, downstairs WC, a master bedroom and en-suite, two further double bedrooms and a family bathroom.

Externally you'll find a garden to the rear and an allocated parking space for 2 cars to the front.

Conveniently located for High Barnet underground station (around 3/4 mile away) and all the amenities of the High Street, including shops and restaurants, as well as plenty of greenery and recreational areas.

Council Tax band: TBD





GROSS INTERNAL AREA (GIA)  
The footprint of the property  
157.17 sqm / 1691.76 sqft

NET INTERNAL AREA (NIA)  
Excludes walls and external features  
Includes washrooms, restricted head height  
139.88 sqm / 1505.66 sqft

EXTERNAL STRUCTURAL FEATURES  
Balconies, terraces, verandas etc.  
6.58 sqm / 70.83 sqft

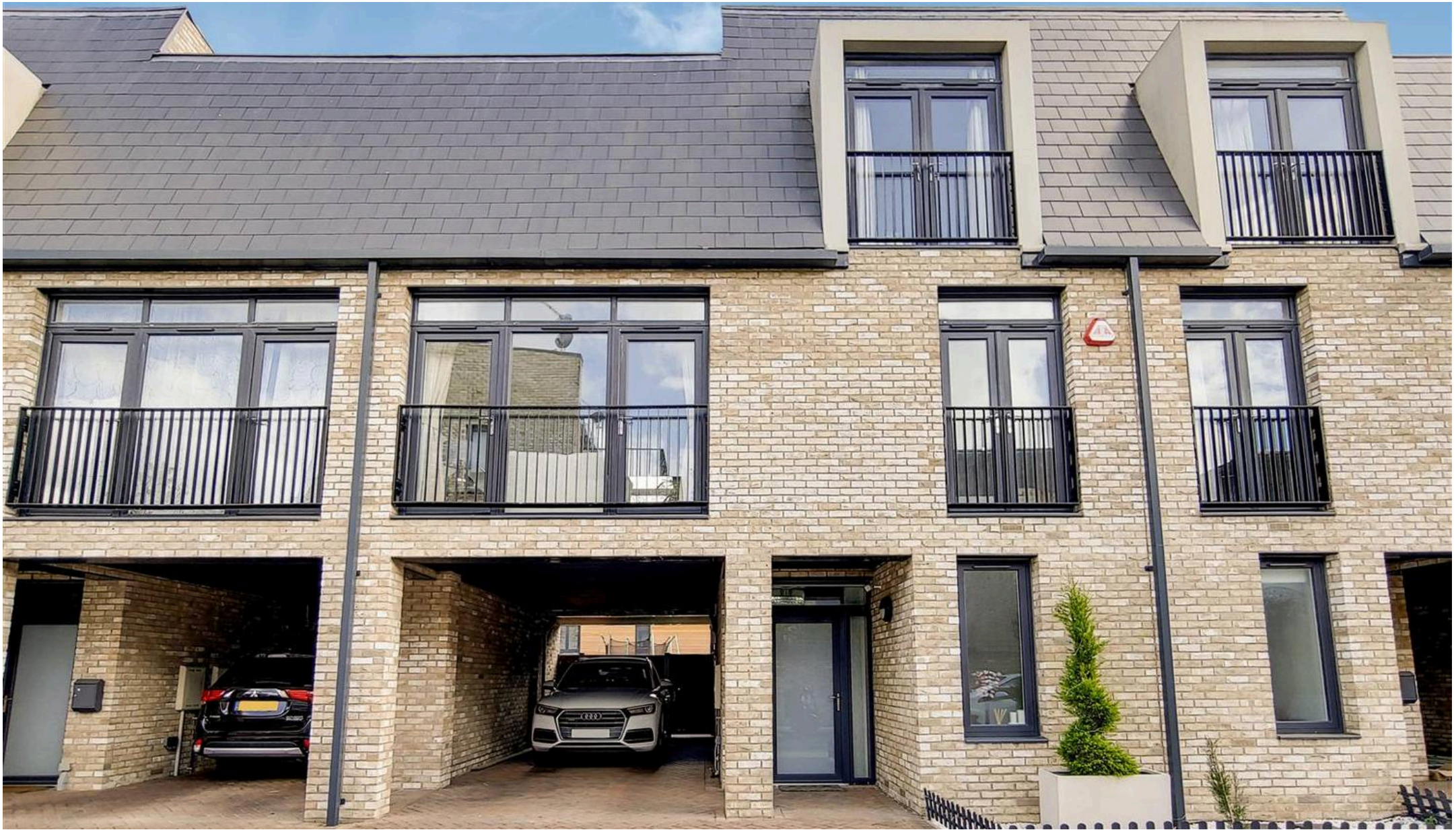
RESTRICTED HEAD HEIGHT  
Limited use area under 1.5 m  
9.89 sqm / 106.46 sqft



Spec Verified floor plans are produced in accordance with Royal Institution of Chartered Surveyors' Property Measurement Standards. Plans and gardens are illustrative only and excluded from all area calculations. Due to rounding, numbers may not add up precisely. All measurements shown for the individual room lengths and widths are the maximum points of measurements captured in the scan.

IPMS 3B RESIDENTIAL 157.04 sqm / 1690.36 sqft  
IPMS 3C RESIDENTIAL 148.52 sqm / 1598.66 sqft

srrc id: 60913f6c4048510dde8b7e33



# Finchleys

Finchleys Estate Agents, 11 Station Road - N3 2SB

02083461180 • [info@finchleys.com](mailto:info@finchleys.com) • [www.finchleys.com/](http://www.finchleys.com/)