



St. Anns Terrace, NW8

£13,400 Per calendar month

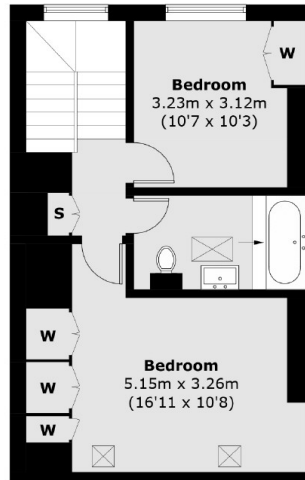
A modern five bedroom townhouse arranged over four floors located just off St John's Wood High Street and a short distance to St John's Wood underground station.

St Ann's Terrace is a great location for a family looking to be close to the American School, Regent's Park and transport links into the City.

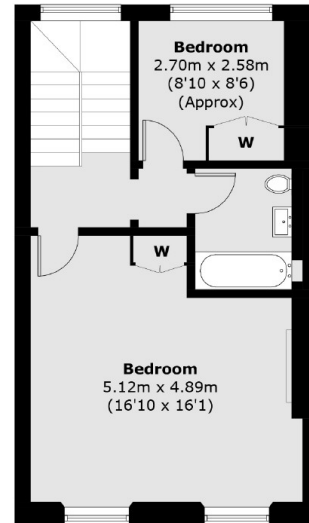
Features

- Five Bedroom House
- Arranged Over Four Floors
- Private Rear Garden
- Modern Eat-In Kitchen
- Spacious Reception Room
- Great Location

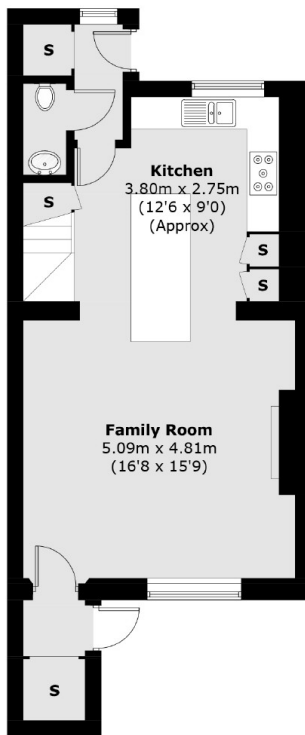
St. Anns Terrace, London, NW8



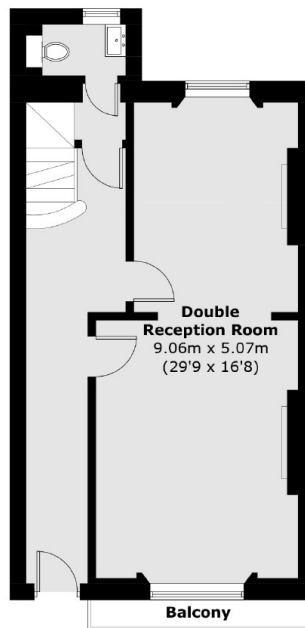
Third Floor



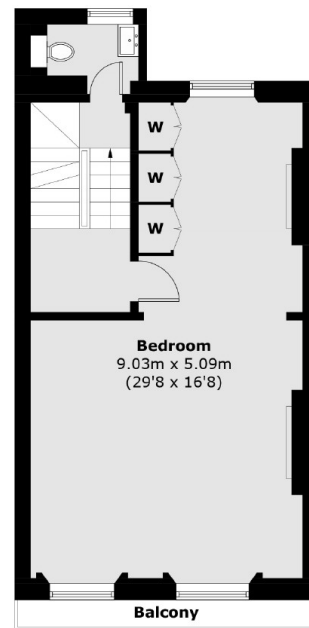
Second Floor



Lower Ground Floor



Ground Floor



First Floor

Total area (approx.): 233.8 sq. m (2,516 sq. ft)
Balcony area : 4.8 sq. m (52 sq. ft)