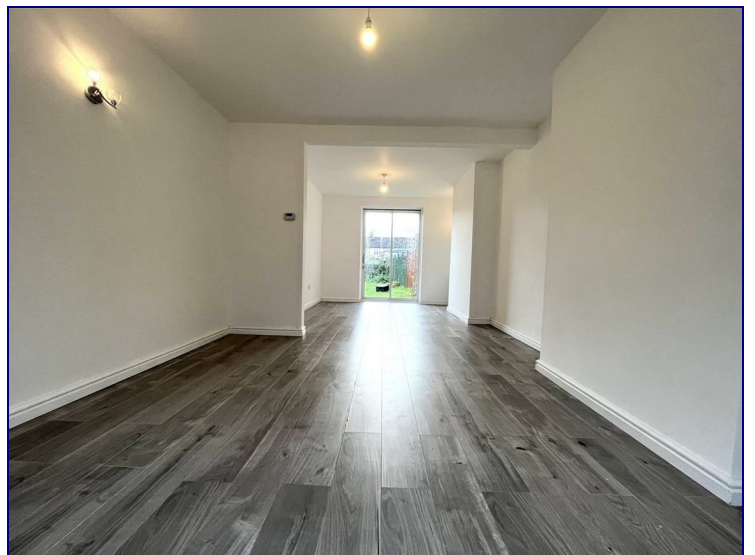


**Southfield Road, Waltham Cross, EN8 7HD**



**£2,100 PCM**

Three Bedroom House with Rear Garage, Available 1st August.

This property offers a large through lounge leading to a great size garden, fitted kitchen, two double bedrooms, one single bedroom and a bathroom suite with large bathtub. This property has side access alongside a front garden.

Located close to Theobald Grove and Cheshunt train station, which both offers fast links into London Liverpool Street with connections to the Victoria Line at Tottenham Hale or Seven Sisters Underground. The property is also conveniently located near local shops and amenities. The A10 / M25 are also easily accessible offering good road links to the surrounding areas.



