



**Guide Price**  
**£210,000**

**Freehold**

2x  1x  2x 

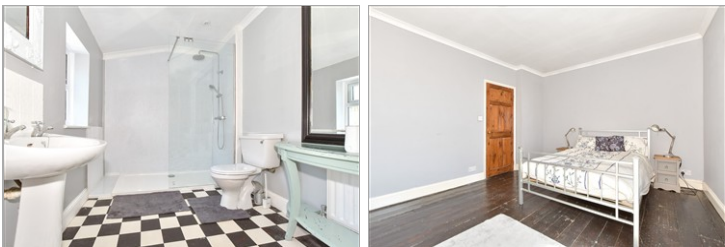
**Odo Road, Dover, Kent,  
CT17**

**OVER 60?**

Secure this property  
for up to **59% less!**

*Wards*  
Helping you move forwards





## Main features

- Spacious open plan lounge/diner
- Pretty bay window with views over Dover
- No onward chain complications
- Ideal for first time buyers and buy to let investors
- Close to a variety of schools and good transport links

## Accommodation

### GROUND FLOOR

Lounge : 14'2 x 11'8 (4.32m x 3.56m)  
 Dining Area : 14'2 x 10'7 (4.32m x 3.23m)  
 Lean-To : 9'6 x 5'11 (2.90m x 1.80m)  
 Kitchen : 8'6 x 6'9 (2.59m x 2.06m)  
 Utility Area : 6'10 x 3'10 (2.08m x 1.17m)

### FIRST FLOOR

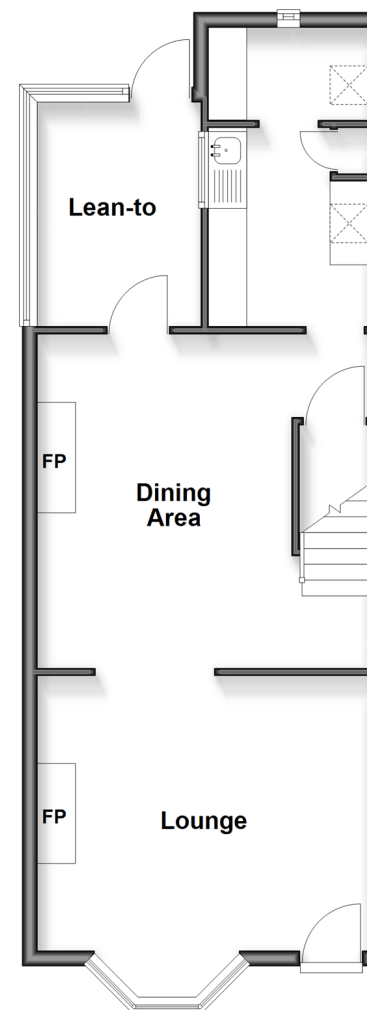
Landing  
 Bedroom 2 : 14'3 x 8'0 (4.35m x 2.44m)  
 Bedroom 1 : 11'7 x 9'1 (3.53m x 2.77m)  
 Bathroom

### OUTSIDE

Front Garden  
 Rear Garden

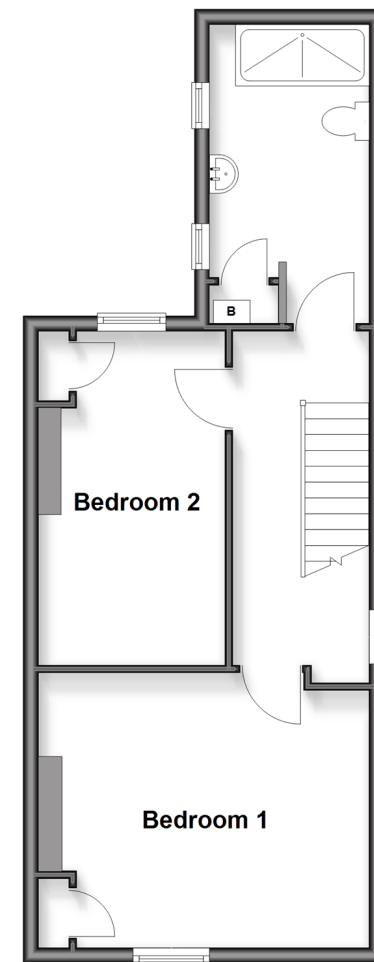
### Ground Floor

Approx. 50.0 sq. metres (537.9 sq. feet)



### First Floor

Approx. 43.0 sq. metres (462.9 sq. feet)



**Call Dover - 01304 214876 ■ [wardsof Kent.co.uk](http://wardsof Kent.co.uk)**

- Legal advice should be taken to verify fixtures/fittings, planning, alterations and/or lease details
- Appliances & services are untested, dimensions are approximate and floor plans are not to scale
- Through a Homewise Home For Life Plan people aged 60+ can secure this property for up to 50% less, by purchasing a Lifetime Lease.

