



Lapwing Close, Thurston, Bury St. Edmunds

Sheridans



# Lapwing Close, Thurston, Bury St. Edmunds IP31 3PW

Guide Price £375,000

A beautifully presented detached three-bedroom family home, traditionally constructed in brick beneath a tiled roof, offering bright and airy accommodation that has been thoughtfully improved and impeccably maintained by the current owners. Perfectly blending contemporary styling with traditional character, this immaculately presented property is ideal for a wide range of discerning purchasers.

The accommodation briefly comprises a clad entrance porch with a composite front door opening into a welcoming entrance hall, featuring stairs rising to the first floor with useful understairs storage where a washing machine is located. A cloakroom is fitted with a WC, wash hand basin and storage cupboard. The heart of the home is the stunning kitchen/dining room, fitted with an attractive range of shaker-style units complemented by hardwood work surfaces. Integrated appliances include a single oven with grill above, microwave, ceramic induction hob, fridge/freezer and dishwasher. The kitchen flows seamlessly into the dining area, where French doors open onto the patio, creating an ideal space for both everyday family life and entertaining. The welcoming sitting room features wooden flooring, window to front and attractive fireplace with inset wood-burning stove set upon a granite hearth, creating a cosy focal point while maintaining the property's light and spacious feel. To the first floor, the landing benefits from a side window providing natural light, an integral storage cupboard, and doors leading to three well-proportioned bedrooms. The principal bedroom enjoys a double-door fitted wardrobe. The family bathroom is fitted with a bath and shower over, vanity wash hand basin with storage beneath, concealed-cistern WC and decorative tiling.

Situated within a sought-after cul-de-sac in a well-served village, the property enjoys convenient access to a range of everyday amenities and a railway station, making it an excellent choice for families, professionals and those seeking village living with excellent

connectivity. Combining stylish modern improvements with traditional features, this exceptional home is ready to move into and also offers scope for extension, subject to the necessary planning permissions.

## Outside

Outside, the property is approached via a paved pathway with a driveway to the side, providing off-road parking alongside a gravelled parking area and raised flower bed. The garage, accessed via an up-and-over door, has been thoughtfully divided to create useful storage areas together with a home office to the rear, offering excellent flexibility for modern living. The fully enclosed rear garden has been attractively landscaped and enjoys a raised lawned area interspersed with specimen plants and trees, creating an appealing outdoor space. A picket fence and gate lead through to a paved patio terrace, providing the perfect setting for al fresco dining, entertaining and relaxation. Further benefits include a courtesy door to the garage, a home office space ideal for home working and gated access to the front of the property.

## Location

Thurston is a highly regarded and well-served village offering an excellent range of amenities, including well-respected primary and secondary schools, a Co-op store, post office, pharmacy, garage, railway station and public house. The village lies approximately five miles east of the historic market town of Bury St Edmunds and provides excellent access to the A14, linking to Cambridge, Ipswich and the wider motorway network via the M11. For commuters, both Thurston and the nearby market town of Stowmarket offer rail services, with Stowmarket providing a direct mainline connection to London Liverpool Street.

## Directions

3 What Words ///described.fairness.voters

## Services

- Detached family home
- Immaculately presented
- Stunning kitchen/dining room
- Sitting room with woodburning stove
- Cloakroom
- Landscaped gardens
- Home office space
- Garage used for storage
- Ample off road parking
- Popular village location

All mains services are connected. Gas fired central heating (boiler replaced 2025)

Council Tax: Mid Suffolk Band: C

Broadband speed: Up to 80 mbps available (Source Ofcom)

Mobile phone signal for: EE, Vodafone and O2 (Source Ofcom)

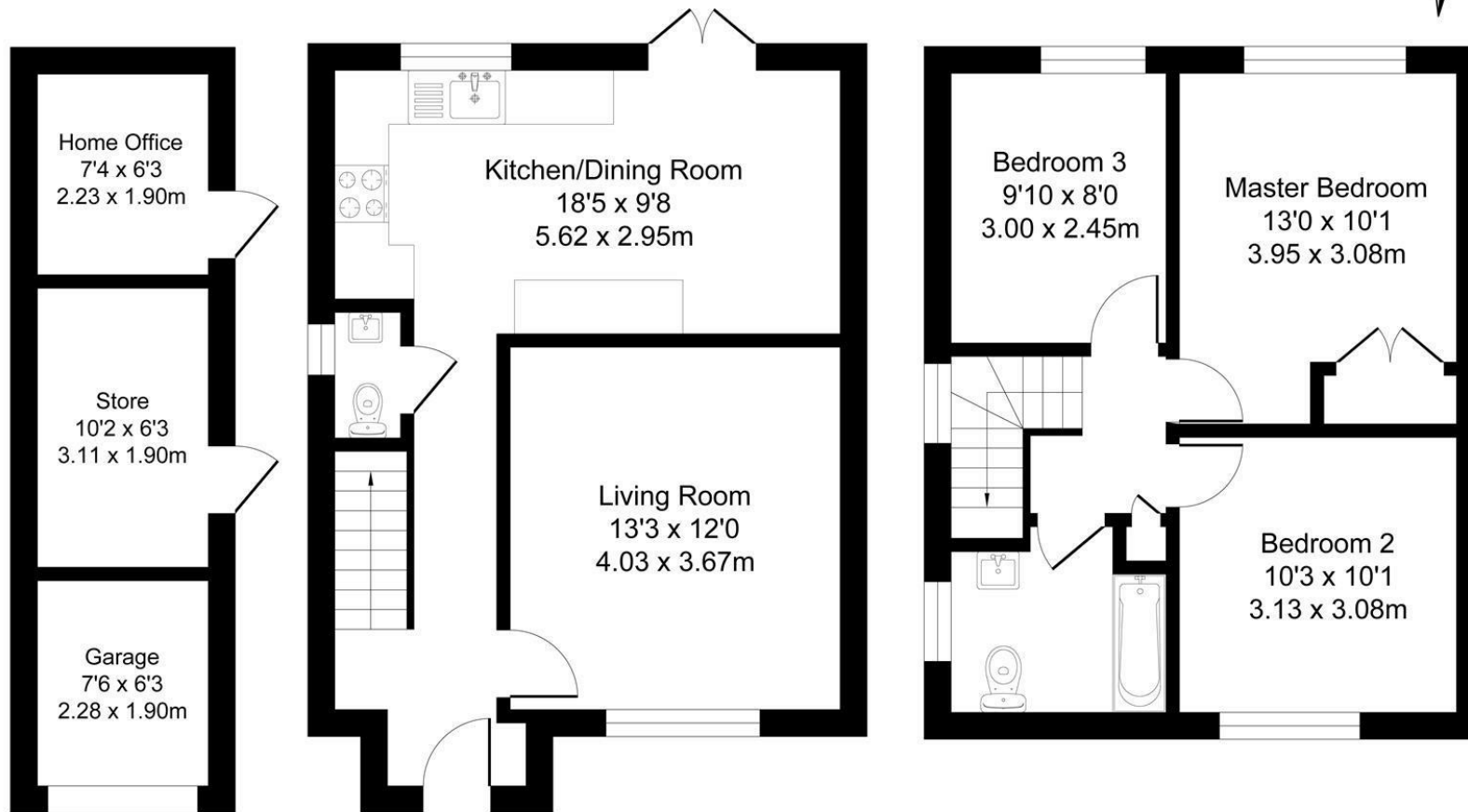
Flood Risk: Very Low



**Garage**  
Area: 15.0 m<sup>2</sup> ... 162 ft<sup>2</sup>

**Ground Floor**  
Area: 41.4 m<sup>2</sup> ... 446 ft<sup>2</sup>

**First Floor**  
Area: 40.5 m<sup>2</sup> ... 436 ft<sup>2</sup>



**Total Area: 96.9 m<sup>2</sup> ... 1044 ft<sup>2</sup>**

All Measurements are approximate and for display purposes only

These particulars are intended to give a brief description of the property as a guide to prospective buyers. Accordingly, any prospective purchasers should satisfy themselves by inspection or otherwise as to the correctness of any statements or information in these particulars. Please refer to the Agents if you require any further clarification or information.

**Sheridans Estate Agents**

**Web:** [www.sheridans.ltd.uk](http://www.sheridans.ltd.uk) **Email:** [info@sheridans.ltd.uk](mailto:info@sheridans.ltd.uk)

**Bury St. Edmunds Office**  
19 Langton Place,  
Bury St Edmunds, IP33 1NE  
Tel: 01284 700 018

**Knightsbridge London Office**  
45 Pont Street,  
London, SW1X 0BD  
Tel: 020 7629 9966

Registered in England No. 04461290  
VAT Number: 794 915 378

Registered office: Sheridans Limited, 19 Langton Place, Bury St Edmunds, IP33 1NE



**Sheridans**