

# DORRITA AVENUE

WATERLOOVILLE | HAMPSHIRE | PO8 8HU



£588,000

Freehold

- Exceptional Detached Residence on a Corner Plot
- Four Bedrooms : Two En-Suites
- Stunning Family Bathroom : Cosy Lounge
- Stylish Open Plan Kitchen/Dining/Family Room
- Outdoor Entertaining Space with Garden Room & Jacuzzi
- Attractive Rear Gardens : Garage
- Newly Laid 'Panda Gravel' Driveway
- Popular Cul-de-Sac Location



## In Brief

This fantastic home has been refurbished and finished beautifully throughout. Boasting a prominent corner plot with driveway and garage, four bedrooms, three bathrooms, a spacious L shaped kitchen/dining/family area and a brilliant outdoor entertaining space, with a garden room and jacuzzi— it really has a lot to offer. As you step inside, the bright entrance hall sets the tone, with its vaulted ceiling and gallery landing creating a great first impression. Downstairs you'll find a great cosy and versatile living room, which could be used as an additional bedroom, plus another handy reception/bedroom next door. The family bathroom is finished to a boutique hotel standard, featuring a contemporary four piece suite with a deep bath and a walk in glass screened shower. The open plan kitchen/dining/family room runs along the back of the house and is a real highlight. The feature bi-fold doors make it easy to open the whole space up to the garden in the warmer months. A very stylish kitchen presents a range of units, ample worktop space and integrated appliances- and a very useful utility room with access to the side, makes a great addition. Upstairs, there are three bedrooms. The principal room benefiting from fitted wardrobes and a fantastic en suite with a walk in shower. Bedroom two also has its own en-suite and fitted wardrobes, whilst bedroom three works well as a single room, nursery or home office and includes a storage cupboard housing the hot water system. Outside, the attractive newly laid driveway offers plenty of off road parking and leads to a larger than average garage. The garden has been thoughtfully landscaped, with a big lawn - perfect for the golf enthusiast, patio and shingled areas surround the property, with a pergola covering the outdoor kitchen/entertaining area, plus a jacuzzi. The garden room is a great bonus, making the outdoors space perfect for for relaxing or hosting family and friends. A truly exceptional home - definitely one you'll want to come and see. Call us now to schedule your private viewing.

£588,000

## KEY FACTS

Tenure : Freehold  
Council Tax Band : D  
EPC Rating : D

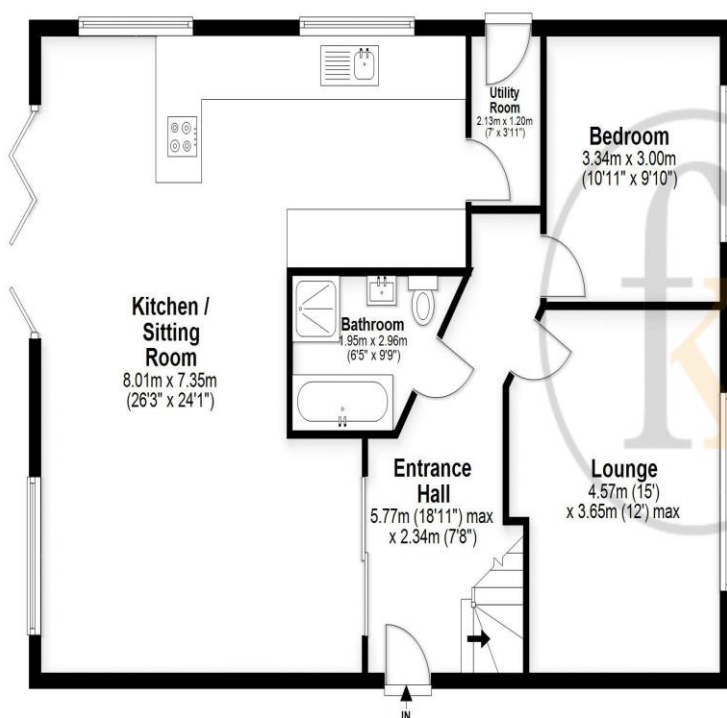


# 7 DORRITA AVENUE

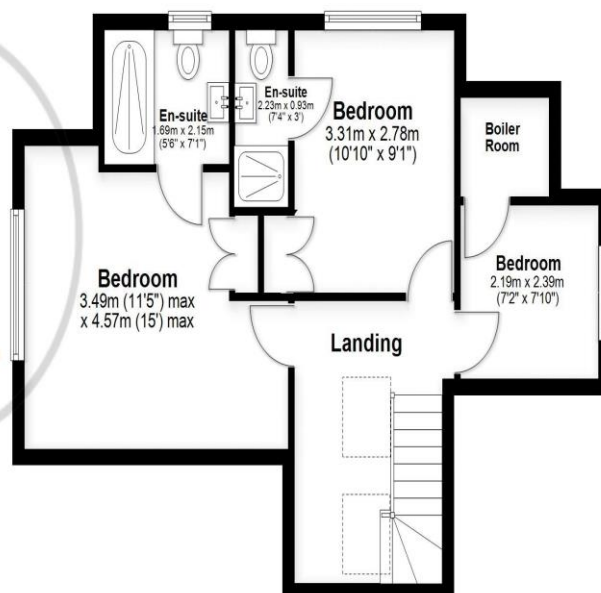
WATERLOOVILLE | HAMPSHIRE | PO8 8HU



**Ground Floor**



**First Floor**



Southsea  
Sales & Lettings  
7/9 Stanley Street,  
Southsea, PO5 2DS  
Tel: 023 9281 5221

Old Portsmouth & Gunwharf Quays  
Sales & Lettings  
The Seagull, 13 Broad Street,  
Old Portsmouth, PO1 2JD  
Tel: 023 9281 5221

Drayton & Out of Town  
Sales & Lettings  
139 Havant Road,  
Drayton, PO6 2AA  
Tel: 023 9221 0101

London  
Sales & Lettings  
Mayfair Office, Cashel House,  
15 Thayer Street, W1U 3JT  
Tel: 0870 112 7099

Southsea  
Admin Centre  
12 Marnion Road,  
Southsea, PO5 2BA  
Tel: 023 9282 2300

[www.fryandkent.com](http://www.fryandkent.com)