



Hereford Mansions, W2

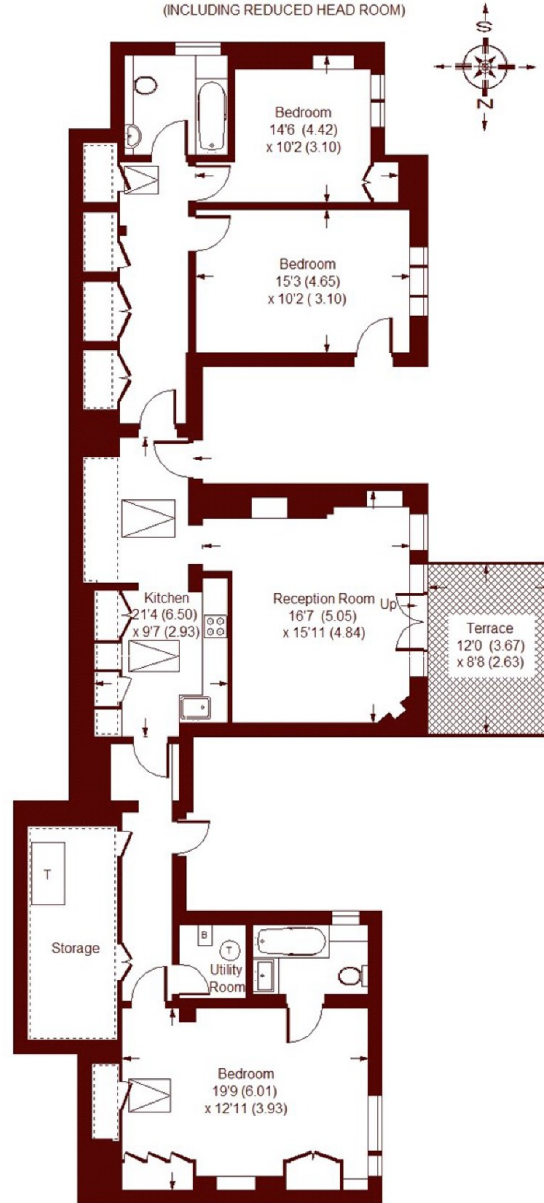
£1,250,000

 3  2  1  D

- Stunning Building
- Three Double Bedrooms
- Generous Storage Space
- Penthouse Apartment
- Concierge
- Access to Westerly Terrace

Hereford Mansions, W2

APPROX. GROSS INTERNAL FLOOR AREA
1426 SQFT / 132.5 SQM
(INCLUDING REDUCED HEAD ROOM)



FIFTH FLOOR

= REDUCED HEADROOM BELOW 1.5 M / 5'0"

Whilst every attempt has been made to ensure the accuracy of the floor plan, measurements are approximate and not to scale.
No guarantee is given on the total square footage of the property quoted on the plan. Figures given are for guidance.
Plan is for illustration purposes only, not to be used for valuations.

Marsh & Parsons Notting Hill

2-6 Kensington Park Road,
London, W11 3BU
020 7313 2890

We aim to make our particulars both accurate and reliable. However, they are not guaranteed; nor do they form part of an offer or contract. If you require clarification on any points then please contact us, especially if you're traveling some distance to view. Please note that appliances and heating systems have not been tested and therefore no warranties can be given as to their good working order.