



High Street, Redhill

£1,650 Per Month

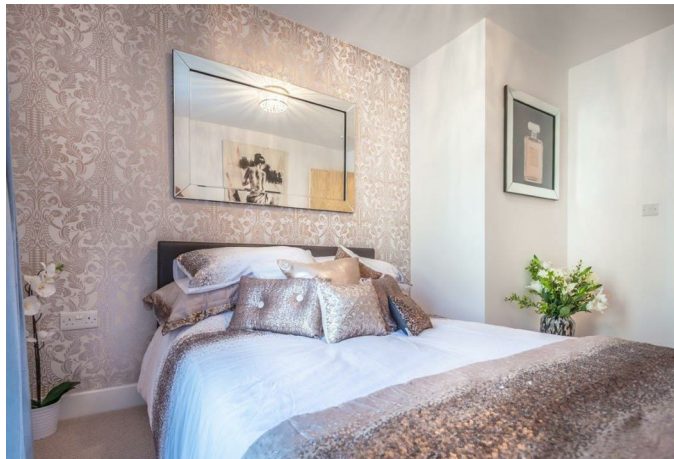




“

“The open plan layout of this apartment really works. Both bedrooms are a great size and having two bathrooms makes it perfect for sharers too. Great location within very short walk of Redhill station.

”



Positioned in the very heart of Redhill, this two-bedroom apartment places everything quite literally on your doorstep. Whether it's the daily commute or a spontaneous evening out, you're exactly where you need to be. Redhill mainline station is just moments away, offering swift links into London in around half an hour — ideal for those who measure mornings in minutes.

Step inside and the entrance hall opens into an impressive open-plan living environment. The kitchen, dining and lounge areas flow effortlessly together, creating a sociable layout that works just as well for quiet evenings in as it does for hosting. The kitchen has been finished in a contemporary style, complete with sleek laminate work surfaces and an integrated fridge/freezer, keeping the aesthetic clean and uncluttered.

Both bedrooms are generous doubles, each fitted with built-in wardrobes to maximise usable space. The principal bedroom enjoys its own en-suite shower room, while a separate modern bathroom serves the rest of the apartment — practical, well-proportioned and thoughtfully arranged.

Living here means convenience without compromise. Independent cafés, restaurants, supermarkets and everyday essentials are all within easy reach. For something a little different, Reigate High Street is just a short distance away, where you can wander through its characterful streets, catch a film at the Everyman Cinema, or settle into one of the many bars and restaurants that give the town its vibrant evening atmosphere.

Please note: Images shown are of the show home and are for illustrative purposes only.



Need to know

- Prime central Redhill location with immediate access to shops, cafés and restaurants
- Moments from Redhill mainline station with fast links to London (approx. 30 minutes)
- Generous open-plan kitchen, dining and living space designed for sociable living
- Contemporary kitchen with laminate worktops and integrated fridge/freezer
- Two well-proportioned double bedrooms with fitted wardrobes
- Principal bedroom benefiting from a private en-suite shower room
- Separate modern family bathroom
- Show home photography used for marketing purposes only
- EPC: C
- Council: C



Living		6.5m x 4.1m	21'0" x 13'5"
Bedroom	■	3.0m x 2.7m	9'8" x 8'9"
Bedroom	■	3.8m x 3.0m	12'5" x 9'8"

Interested?

redhill@ralphjames.co.uk
01737 765 555

1

ralphjames.co.uk