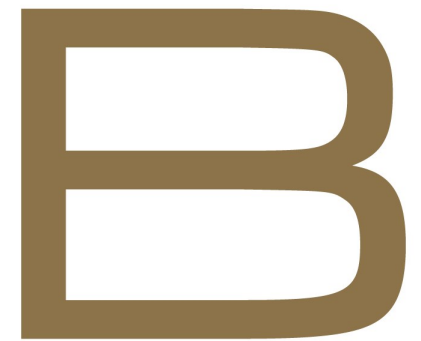




*Sutherland Avenue, Maida Vale, W9 2HF*  
*£799,000 Share of Freehold*



BRAITHWAIT



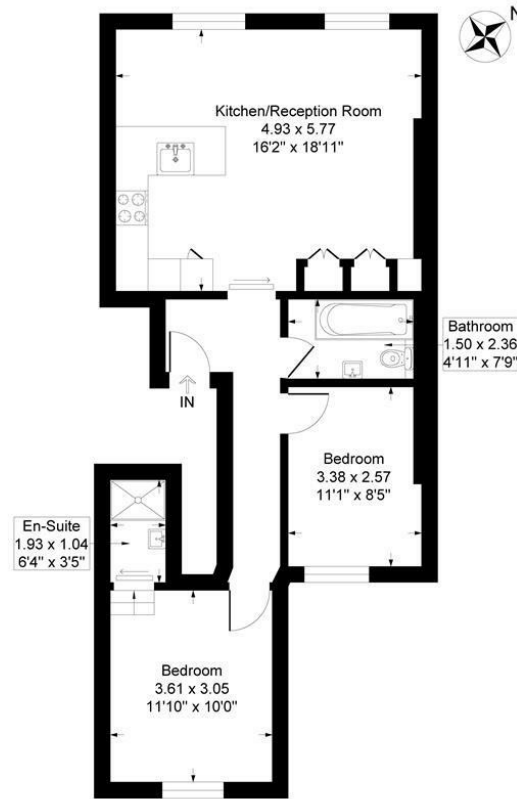
2 x  2 x  1 x 

A lovely newly renovated and bright second floor two bedroom flat on Sutherland Avenue, close to Shirland Road, the accommodation measuring 669 sq ft and has a with an open plan reception and kitchen with island, great for informal dining, and two double bedrooms one with an en-suite shower room and a separate bathroom tiled in a contemporary fashion. The flat benefits from good storage. Share of Freehold. There is easy access to Warwick Avenue tube, the cafes on Formosa street and the picturesque canals of Little Venice with Paddington Station close by.



## Sutherland Avenue, London, W9

Approximate Gross Internal Floor Area = 62.1 sq m / 669 sq ft



Second Floor

Illustration for identification purposes only, measurements are approximate, not to scale.

**Important Notice** Debussy Property Service Ltd trading as Braithwait for themselves and for the vendor of this property whose agents they are, give notice that (i) these particulars do not constitute any part of an offer or contract, (ii) all statements contained within these particulars are made without responsibility on the part of Braithwait or the vendor, (iii) whilst none in good faith, none of the statements contained within these particulars are to be relied upon as a statement of representation or fact, (iv) any intending purchaser must satisfy him/herself by inspection or otherwise as to the correctness of each of the statements contained within these particulars, (v) the vendor does not make or give either Braithwait or any person within their employment any authority to make or give any representation or warranty whatsoever in relation to this property. Wide angled lenses may be used in photographs.

Call us on 0207 289 8889 or email [sales@braithwait.co.uk](mailto:sales@braithwait.co.uk)

