

Beaumont Crescent, W14

£465,000

A spacious and well presented one bedroom apartment set in an attractive period mansion building. Situated on the second floor with wooden floors through-out, separate kitchen, double bedroom and reception.

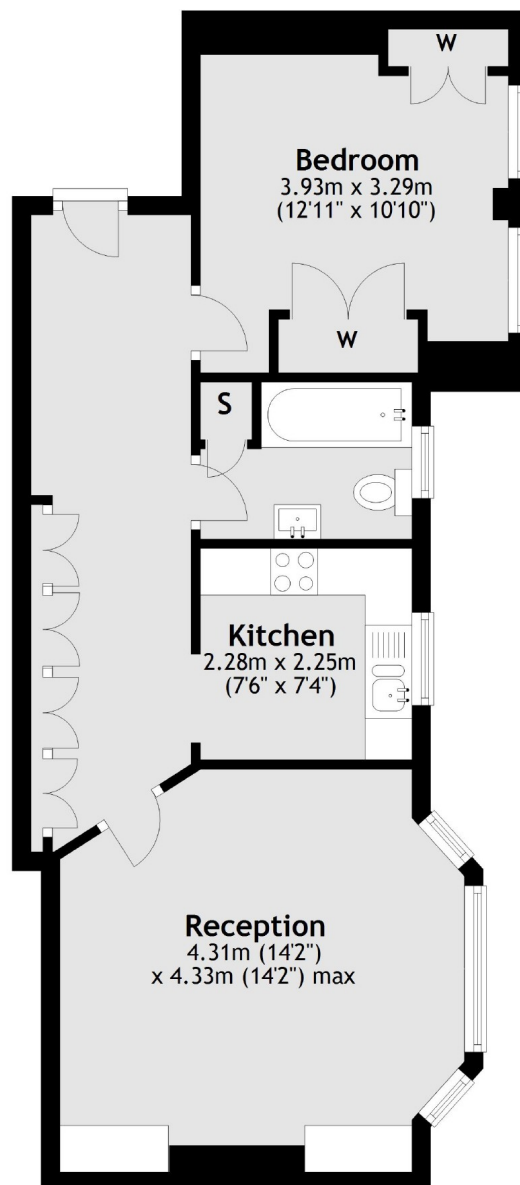
West Kensington Mansions is located on Beaumont Crescent, off North End Road within 300 yards of West Kensington underground station, local shops and the A4 for easy access into and out of Central London.

Features

- 175 Year Lease
- Great Size
- Lovely Condition
- One Bedroom
- Wooden Floors
- High Ceilings

Beaumont Crescent, London, W14

First Floor



Total area: approx. 50.4 sq. metres (543.0 sq. feet)

Contact

To arrange a viewing call our office on the number below or visit our website.



Energy Rating: C. We aim to make our particulars both accurate and reliable. However they are not guaranteed; nor do they form part of an offer or contract. If you require clarification on any points then please contact us, especially if you're traveling some distance to view. Please note that appliances and heating systems have not been tested and therefore no warranties can be given as to their good working order.