



82 Duxbury Avenue, Little Lever
£175,000

Miller Metcalfe
Every step of the way

82 Duxbury Avenue

Little Lever, Bolton

***FOR SALE VIA MODERN METHOD OF AUCTION, STARTING BID £175,000 PLUS RESERVATION FEES *** Family home situated in a very popular and convenient location of Little Lever renowned for its strong local ties, convenient public transport, and a wealth of amenities, ideally located for access to Bolton & Bury. Accommodation briefly comprising entrance hall, lounge, fitted dining kitchen, bedroom three and modern shower room. Rising to the first floor are two bedrooms and a wc. Outside there are garden to the front and rear with a driveway providing parking for several cars which leads to a single garage. The property is being offered for sale with no onward chain. Auctioneer Comments This property is for sale by the Modern Method of Auction. Should you view, offer or bid on the property, your information will be shared with the Auctioneer, iamsold Limited This method of auction requires both parties to complete the transaction within 56 days of the draft contract for sale being received by the buyers solicitor (for standard Grade 1 properties). This additional time allows buyers to proceed with mortgage finance (subject to lending criteria, affordability and survey). The buyer is required to sign a reservation agreement and make payment of a non-refundable Reservation Fee. This being 4.5% of the purchase price including VAT, subject to a minimum of £6,600.00 including VAT. The Reservation Fee is paid in addition to purchase price and will be considered as part of the chargeable consideration for the property in the calculation for stamp duty liability. Buyers will be required to go through an identification verification process with iamsold and provide proof of how the purchase would be funded. This property has a Buyer Information Pack which is a collection of documents in relation to the property. The documents may not tell you everything you need to know about the property, so you are required to complete your own due diligence before bidding. A sample copy of the Reservation Agreement and terms and conditions are also contained within this pack. The buyer will also make payment of £300 including VAT towards the preparation cost of the pack, where it has been provided by iamsold. The property is subject to an undisclosed Reserve Price with both the Reserve Price and Starting Bid being subject to change. Referral Arrangements The Partner Agent and Auctioneer may recommend the services of third parties to you. Whilst these services are recommended as it is believed they will be of benefit; you are under no obligation to use any of these services and you should always consider your options before services are accepted. Where services are accepted the Auctioneer or Partner Agent may receive payment for the recommendation and you will be informed of any referral arrangement and payment prior to any services being taken by you.

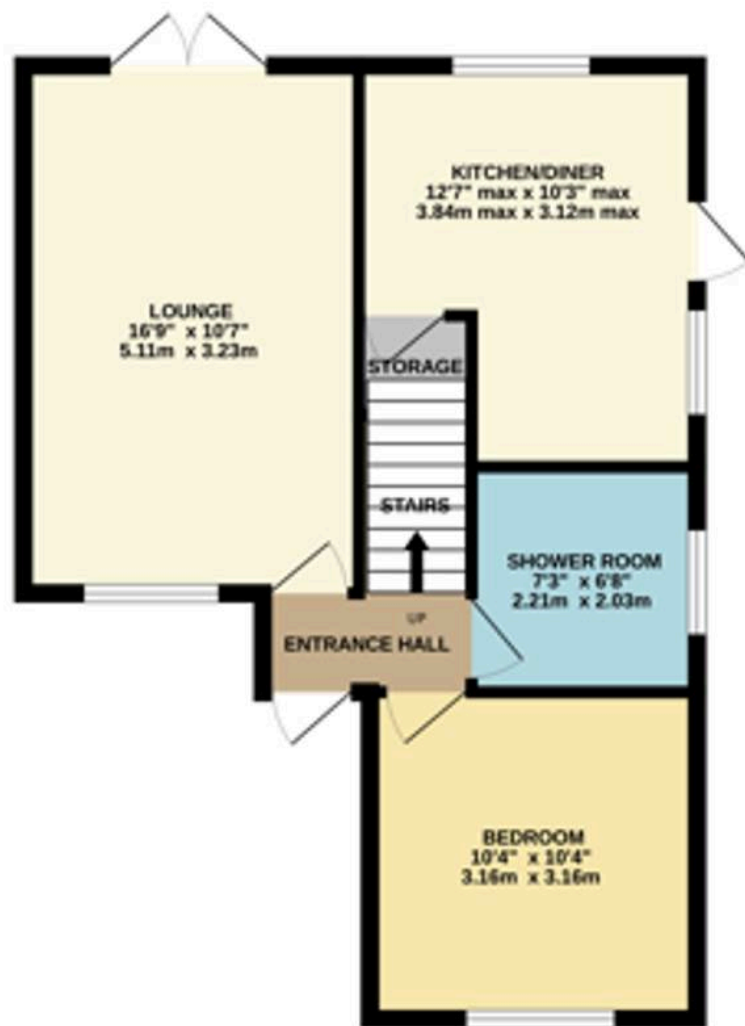








GROUND FLOOR
507 sq.ft. (47.1 sq.m.) approx.



1ST FLOOR
390 sq.ft. (36.2 sq.m.) approx.



TOTAL FLOOR AREA : 897 sq.ft. (83.3 sq.m.) approx.

Whilst every attempt has been made to ensure the accuracy of the floorplan contained here, measurements of doors, windows, rooms and any other items are approximate and no responsibility is taken for any error, omission or mis-statement. This plan is for illustrative purposes only and should be used as such by any prospective purchaser. The services, systems and appliances shown have not been tested and no guarantee as to their operability or efficiency can be given.
Made with Metropix ©2025



Miller Metcalfe - Bolton

Miller Metcalfe, 2-10 Bradshawgate - BL1 1DG

01204 535353 • bolton@millermetcalfe.co.uk • millermetcalfe.co.uk/

Miller Metcalfe
Every step of the way