



## Chapel Gardens, Gospel Lane, Acocks Green, B27 7AR

**£355,000**

Beautifully presented three-bedroom semi-detached home on Gospel Lane, built by Damson Homes and finished to a high specification throughout. Offering a modern kitchen with integrated Neff appliances, spacious living/dining room, downstairs W.C., stylish family bathroom, private landscaped garden, driveway parking, and EV charging point. Ideally located in Acocks Green with excellent amenities and transport links nearby—perfect for modern family living.

**Bedrooms: 3 | Bathrooms: 2 | Receptions: 1**

**Property Type:** Semi Detached House

**Bedrooms: 3 | Bathrooms: 2 | Receptions: 1**

Step inside this beautifully presented semi-detached home on Gospel Lane, expertly crafted by Damson Homes, where contemporary design meets everyday practicality in the heart of Acocks Green.

### **Approach & Exterior**

Set behind a generous driveway, the property offers ample off-road parking along with the added benefit of an electric vehicle charging point—perfectly suited to modern living. The attractive frontage provides an immediate sense of style and quality that continues throughout.

### **Ground Floor**

A welcoming entrance hallway leads you into a thoughtfully designed layout, beginning with a stylish, separate kitchen. This impressive space features sleek, soft-close cabinetry paired with luxurious granite or quartz worktops, and a full range of integrated Neff appliances including fridge, freezer, dishwasher, induction hob, electric oven, and a statement extractor. Subtle under-unit and kickboard LED lighting, ceramic tiled flooring, and a designer radiator complete the look.

To the rear, the spacious living and dining area offers a bright and versatile setting, ideal for both relaxing and entertaining, with plenty of room for dining and comfortable seating. A contemporary downstairs W.C. adds convenience, fitted with high-quality sanitary ware, a vanity sink unit, elegant feature tiling, and designer fixtures.

### **First Floor**

Upstairs, three well-proportioned bedrooms provide calm and comfortable retreats, all finished with plush carpeting and tasteful accent lighting. The family bathroom is finished to a high standard, featuring a modern suite with vanity unit, stylish tiling, and a luxurious oversized monsoon shower over the bath. Additional storage throughout the home ensures a practical and clutter-free living environment.

### **Outside Space**

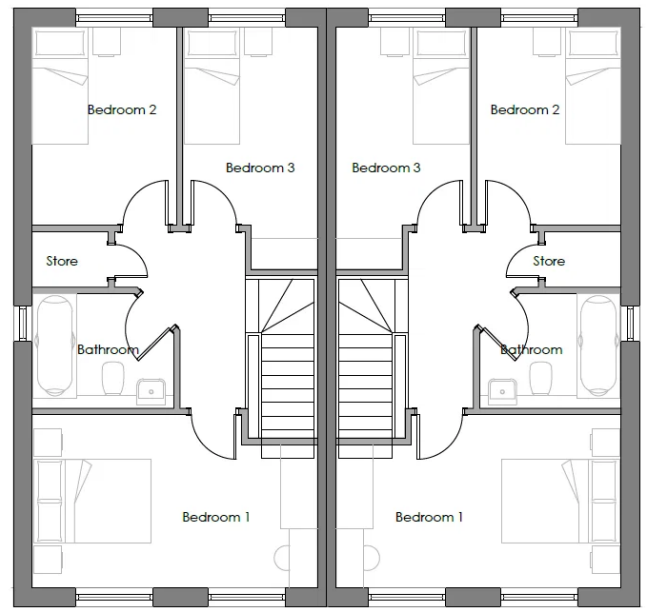
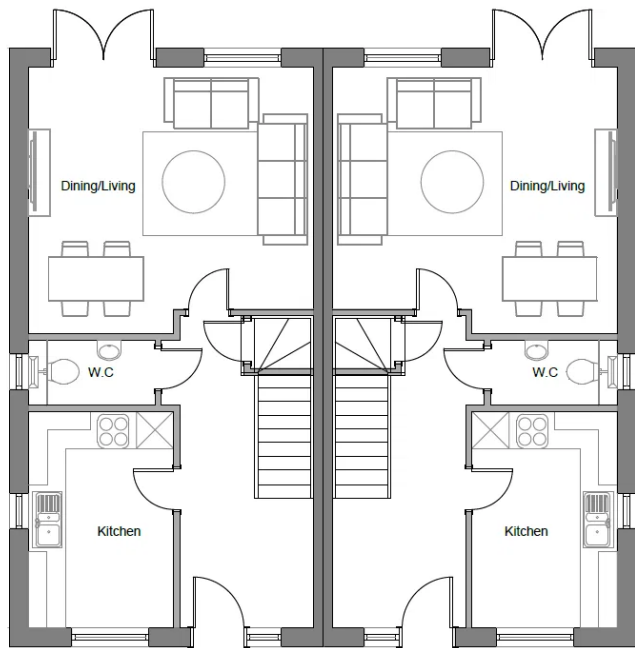
The rear garden has been beautifully landscaped to create a private outdoor haven. A block-paved patio area with integrated lighting offers the perfect space for entertaining, alongside a lawned area, external tap, and a useful garden shed.

### **Location**

Ideally positioned on Gospel Lane, this home benefits from excellent access to local amenities, shops, and transport links within Acocks Green, making it perfect for commuters and families alike. The area strikes a wonderful balance between peaceful suburban living and convenient access to the city.

This exceptional home represents a fantastic opportunity to acquire a high-specification property in a sought-after location. Early viewing is highly recommended to fully appreciate everything on offer.





**Contact us today!**  
0121 744 4144 + Option 3  
[newhomes@smart-homes.co.uk](mailto:newhomes@smart-homes.co.uk)

