



**3 bedroom  
Detached  
Bungalow  
located in  
Harwich.**

Asking Price Of  
**£290,000**

Find us on..



**JOHN ALEXANDER**  
ESTATE AGENTS

# Beryl Road Harwich CO12 4RF

## FULL DESCRIPTION

### THE OVERVIEW

\*\*\*Asking Price Of £290,000\*\*\*

This attractive detached bungalow offers three well-proportioned bedrooms, a spacious lounge, a separate fitted kitchen, and a family bathroom. Externally, the property benefits from a garage and a driveway providing off-road parking for multiple vehicles, together with a beautifully maintained rear garden.

### THE HOME

Stepping inside, this charming bungalow offers bright and airy accommodation throughout. The spacious lounge is filled with natural light and features doors opening directly onto the rear garden, creating a wonderful connection between indoor and outdoor living. The well-appointed fitted kitchen provides a practical and inviting space, while three generously proportioned bedrooms offer comfortable and versatile accommodation. A well-presented family bathroom completes the layout, making this an attractive and welcoming home.

### THE OUTSIDE

Externally, the property benefits from a garage and a driveway, providing the convenience of ample off-road parking. To the rear, a spacious and well-maintained garden offers an attractive outdoor space, perfect for relaxing or entertaining, and beautifully completes the exterior of this delightful home.

### THE LOCATION

Situated along a quiet residential road in a highly desirable location, the property enjoys convenient access to a pharmacy and a range of local amenities, while Dovercourt's picturesque seafront is just a short drive away.



3



1



1



D



EPC

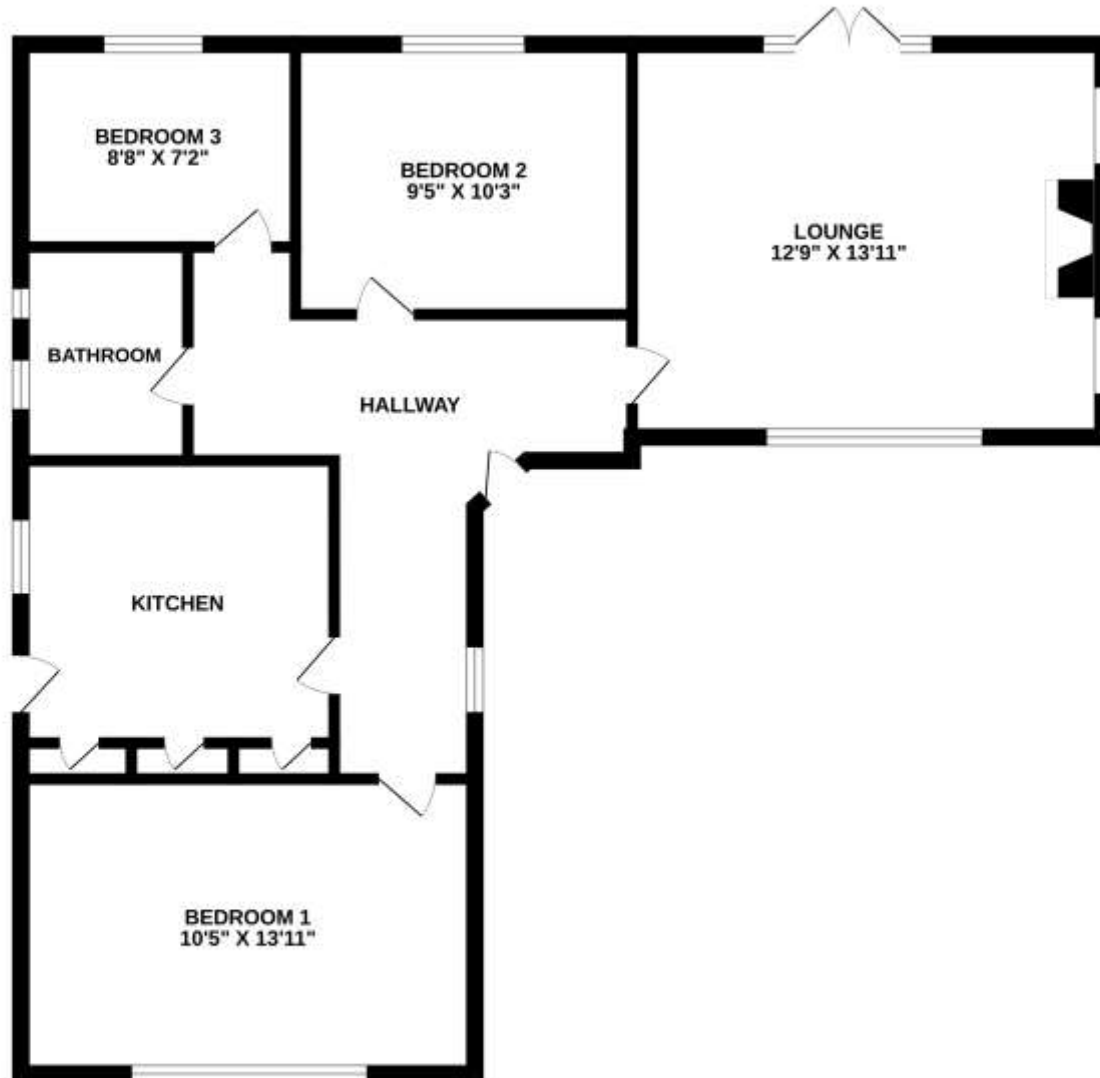
D





## FLOORPLAN

### GROUND FLOOR



While every attempt has been made to ensure the accuracy of the floorplan contained here, measurements of doors, windows, rooms and any other items are approximate and no responsibility is taken for any error, omission or mis-statement. This plan is for illustrative purposes only and should be used as such by any prospective purchaser. The services, systems and appliances shown have not been tested and no guarantee as to their operability or efficiency can be given.  
Marked with Metrics ©2025

## DIRECTIONS

### CONTACT

**288 High Street  
Harwich  
Essex  
CO12 3PD**

**E [enquiries@john-alexander.co.uk](mailto:enquiries@john-alexander.co.uk)**

**T 01255 520007**

**[www.john-alexander.co.uk](http://www.john-alexander.co.uk)**

Find us on..



**JOHN ALEXANDER  
ESTATE AGENTS**