









3 The Orchards

Hayton Street, Knutsford

High-spec 4-bed semi in St John's Conservation Area. Modern kitchen, open-plan living, 3 bathrooms, principal suite, parking, walled garden. Moments from Knutsford town centre.

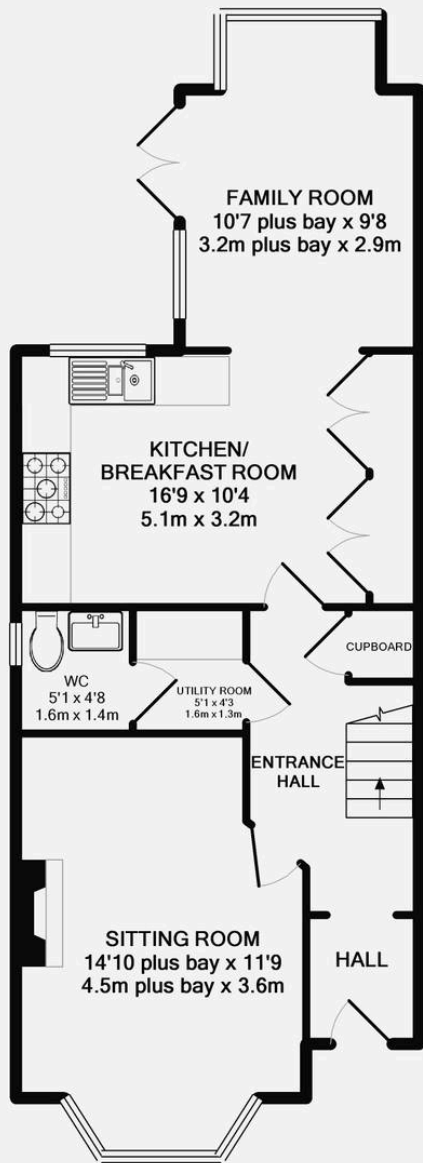
Council Tax band: G

Tenure: Freehold

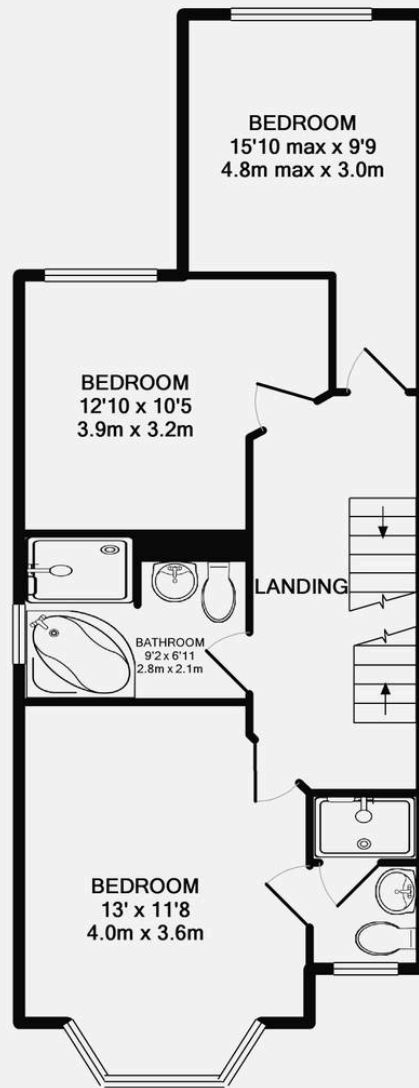
EPC Energy Efficiency Rating: C

- Modern semi detached house in the St Johns conservation area
- Four bedrooms, three bathrooms, two reception rooms
- Off road parking and South-west facing lawned walled garden
- No onward chain

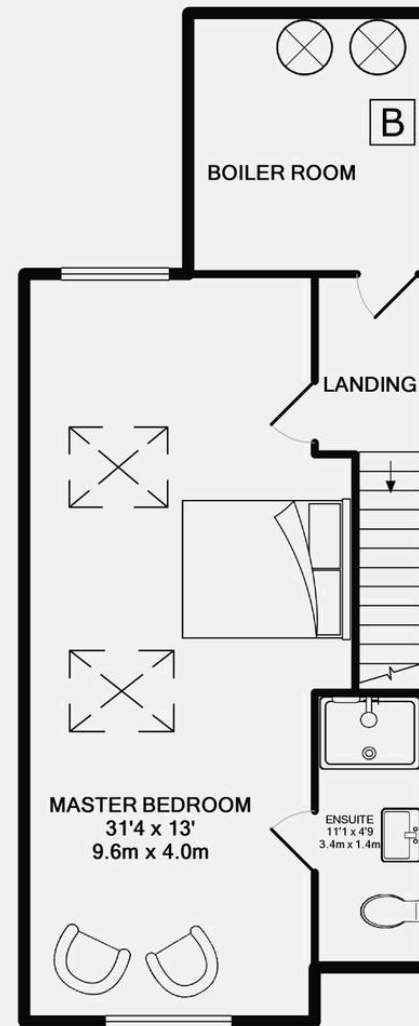




GROUND FLOOR
APPROX. FLOOR
AREA 620 SQ.FT.
(57.6 SQ.M.)



1ST FLOOR
APPROX. FLOOR
AREA 596 SQ.FT.
(55.3 SQ.M.)



2ND FLOOR
APPROX. FLOOR
AREA 585 SQ.FT.
(54.4 SQ.M.)

TOTAL APPROX. FLOOR AREA 1801 SQ.FT. (167.3 SQ.M.)

Whilst every attempt has been made to ensure the accuracy of the floor plan contained here, measurements of doors, windows, rooms and any other items are approximate and no responsibility is taken for any error, omission, or mis-statement. This plan is for illustrative purposes only and should be used as such by any prospective purchaser. The services, systems and appliances shown have not been tested and no guarantee as to their operability or efficiency can be given
Made with Metropix ©2013



Stuart Rushton & Company

Stuart Rushton & Co, 35 King Street – WA16 6DW

01565 757000

enquiries@srushton.co.uk

www.srushton.co.uk



We are not authorised to make or give any representations or warranties in relation to the property either here or elsewhere. We assume no responsibility for any statement that may be made in these particulars, and they do not form part of any offer or contract and must not be relied upon as statements or representation of fact. Any areas, measurements or distances are approximate. The text, photographs and plans are for guidance only. Importantly, it should not be assumed that the property has all necessary planning, building regulations or other consents and we have not tested any services, equipment or facilities. Purchasers must satisfy themselves by inspection or otherwise.