



Guide Price
£280,000

Freehold

3x  1x  1x 

**Old Tovil Road,
Maidstone, Kent ME15**

OVER 60?

Secure this property
for up to **59% less!**

Wards
Helping you move forwards



Main features

- Nicely presented with neutral decor throughout
- Large bedrooms
- Chain free
- Spacious with room to entertain
- Walking distance to local schools, shops and amenities

Accommodation

GROUND FLOOR

Hallway

Lounge: 12'0 x 10'0 (3.66m x 3.05m)

Kitchen: 18'1 x 10'0 (5.52m x 3.05m)

FIRST FLOOR

Landing

Bedroom 1: 13'0 x 10'0 (3.97m x 3.05m)

Bedroom 2: 11'0 x 9'0 (3.36m x 2.75m)

Bedroom 3: 8'0 x 6'0 (2.44m x 1.83m)

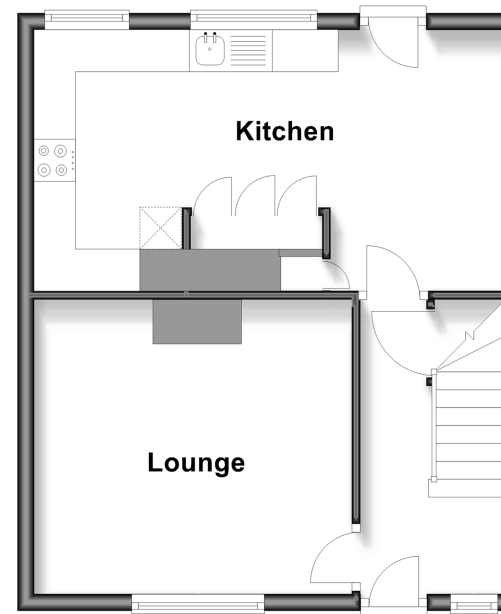
OUTSIDE

Rear Garden

Front Garden

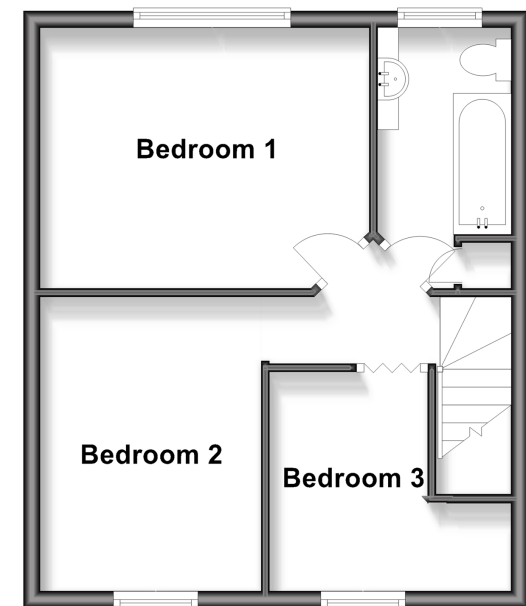
Ground Floor

Approx. 38.2 sq. metres (411.1 sq. feet)



First Floor

Approx. 38.2 sq. metres (411.1 sq. feet)



Call Maidstone - 01622 683737 ■ wardsofkent.co.uk

■ Legal advice should be taken to verify fixtures/fittings, planning, alterations and/or lease details
 ■ Through a Homewise Home For Life Plan people aged 60+ can secure this property for up to 50% less, by purchasing a Lifetime Lease.

■ Appliances & services are untested, dimensions are approximate and floor plans are not to scale



13143505/20251024/TB/TB