



Hillside, NW10

£369,500

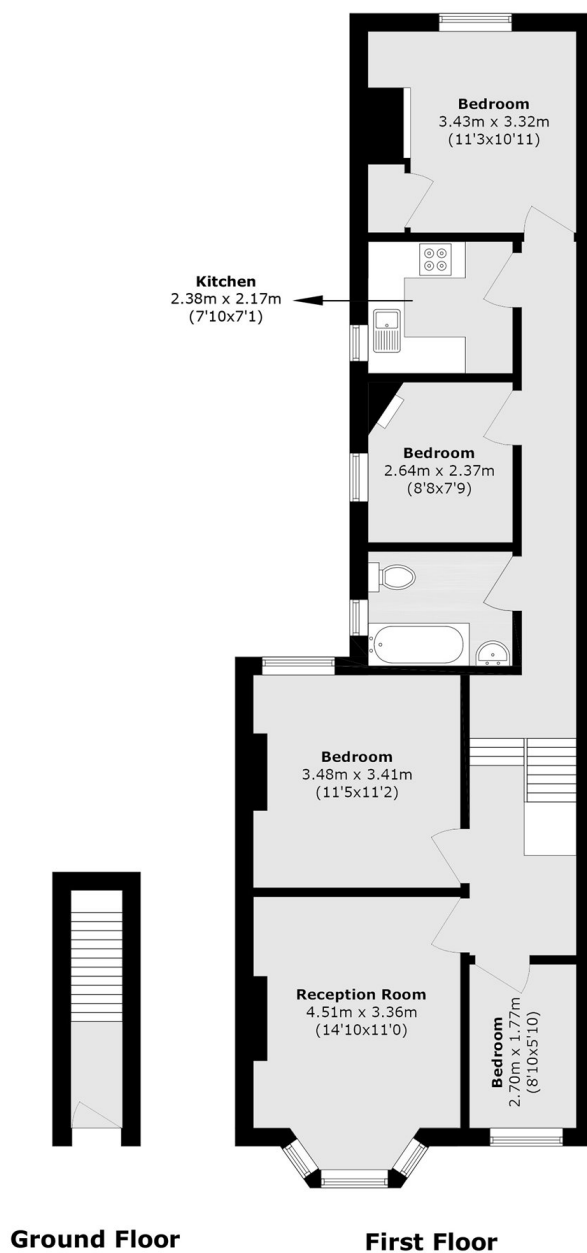
This four bedroom first floor flat forms part of a period conversion and offers well-balanced accommodation throughout. The property comprises a separate reception room with bay window, separate kitchen, four bedrooms and a family bathroom. Presented in good condition throughout.

Hillside is well located for local shops, cafés and everyday amenities. Stonebridge Station (Bakerloo Line and London Overground) is just 0.4 miles away, offering easy access into Central London. The nearby A406 provides excellent road connections to surrounding areas.

Features

- Four Bedrooms
- First Floor Flat
- Excellent Condition
- Leasehold
- Close to Transport Links
- Chain Free

Hillside, London, NW10



Total area (approx.): 80.64 sq. m (868.0 sq. ft)