

# clever



## 5 Arundel Crescent

Central, Plymouth, PL1 5FD

**Price £130,000**



Welcome to this modern apartment located on Arundel Crescent in the vibrant city of Plymouth. Built in 2021, this delightful one-bedroom property offers a contemporary living experience, perfect for first-time buyers or those seeking a stylish retreat in a central location.

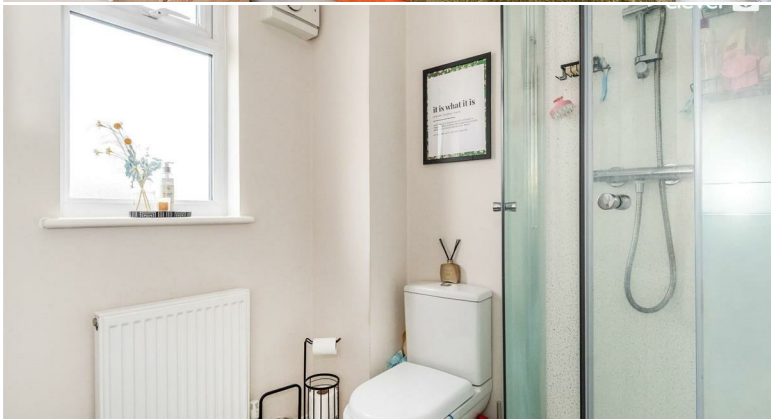
Spanning an area of 398 square feet, the apartment features a well-appointed reception room that provides a comfortable space for relaxation and entertaining. The bedroom is thoughtfully designed to ensure a peaceful night's sleep, while the bathroom is equipped with modern fixtures, catering to your everyday needs.

One of the standout features of this property is its private parking, allowing for convenient access to your vehicle. Additionally, the apartment overlooks the picturesque Victoria Park, providing a lovely view and a serene atmosphere right at your doorstep.

Situated in a central location, you will find yourself within easy reach of local amenities, shops, train station, city centre & transport links, making it an ideal choice for those who appreciate the convenience of city living.

This apartment is not just a home; it is an opportunity to embrace a modern lifestyle in a sought-after area. Do not miss the chance to make this charming property your own.





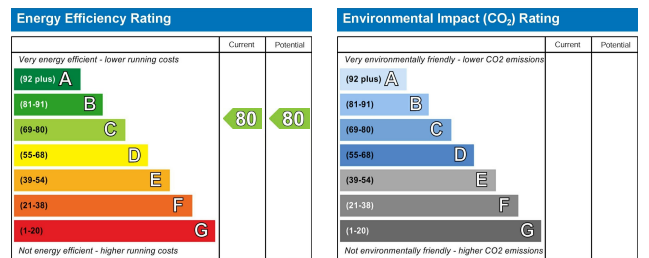
## Area Map



## Floor Plans



## Energy Efficiency Graph



These particulars, whilst believed to be accurate are set out as a general outline only for guidance and do not constitute any part of an offer or contract. Intending purchasers should not rely on them as statements of representation of fact, but must satisfy themselves by inspection or otherwise as to their accuracy. No person in this firm's employment has the authority to make or give any representation or warranty in respect of the property.

2 Old Town Street, Plymouth, PL1 1DP  
 Tel: 01752421911 Email: sales@stayclever.co.uk <https://www.stayclever.co.uk>