



Kepler Road, SW4

£4,200 Per calendar month

This converted four double bedroom flat offers an open plan reception room, modern kitchen, two bathrooms and a private rear garden. Ideal for professional sharers.

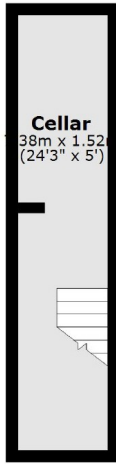
Nestled between Clapham High Street and Brixton Town Centre, Kepler Road gives access to two of South London's most popular destinations.

Features

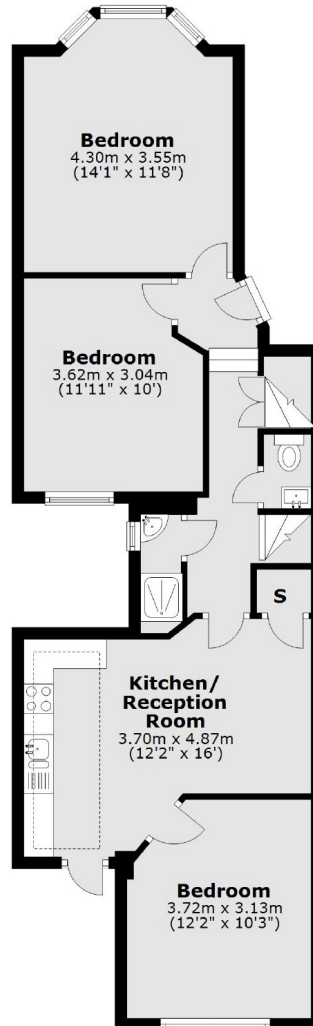
- Four Double Bedrooms
- Private Garden
- Open Plan Reception
- Prime Location
- Ground Floor Flat
- Modern Bathroom

Kepler Road, London, SW4

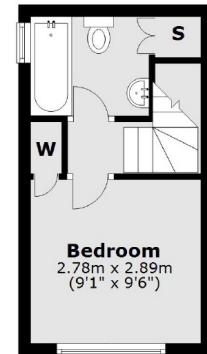
Lower Ground Floor



Ground Floor



First Floor



Total area: approx. 91.8 sq. metres (988.4 sq. feet)