



## Janeford Court Glanville Way

, Epsom, KT19 8HQ

**Asking Price £485,000**



Thomas & May is delighted to bring to the market this beautifully presented ground floor two double bedroom apartment located in an excellent position on the highly sought after Noble Park development. The property offers over 900sqft of living space with high ceilings, period sash windows and is finished to a high standard throughout including bespoke fitted wardrobes in both bedrooms. Accommodation comprises a large double aspect open plan kitchen/living room overlooking the private terrace and communal gardens, principle bedroom with ensuite, further double bedroom and a family bathroom. The property also benefits from a 45ft covered private terrace, an allocated parking space and use of the well maintained communal gardens.





Entrance

Private front door with spy hole leading to entrance hall which has wood effect flooring, radiator, storage cupboard with space and plumbing for washing machine, fuse board, doors leading to.

Kitchen / Living Room 20'3" x 19'10" (6.18 x 6.06)

Dual aspect double glazed sash windows overlooking front and rear communal gardens, continuation of wood effect flooring, radiators, power points, bespoke fitted display/storage unit. power points, TV aerial point, telephone point.

Kitchen Area

Range of wall and base units, granite worktop with inset one and a half bowl sink with mixer tap, integrated oven, integrated gas hob with extractor fan over, integrated dishwasher, cupboard housing boiler. Kitchen island with granite worktop, under counter integrated fridge, under counter integrated freezer.

Principle Bedroom 20'4" x 11'7" (6.22 x 3.55)

Rear aspect double glazed sash window, fitted wardrobes, continuation of wood effect flooring, radiator, power points, door leading to.

Ensuite

Three piece suite comprising low level wc with concealed cistern, sink with chrome mixer tap, shower enclosure with power shower, tiled walls, tiled floor, heated chrome towel radiator, extractor fan.

Bedroom 18'6" x 8'7" (5.66 x 2.62)

Front aspect double glazed sash window, fitted wardrobes, continuation of wood effect flooring, radiator, power points.

Bathroom

Three piece suite comprising low level wc with concealed cistern, sink with chrome mixer tap, panel enclosed bath with chrome mixer tap, and shower screen with shower, tiled floor, tiled walls, heated chrome towel radiator, extractor fan.

Outside

Terrace 45'6" x 7'0" (13.88 x 2.15)

Covered private terrace with outside lighting overlooking communal gardens.

Allocated parking Space

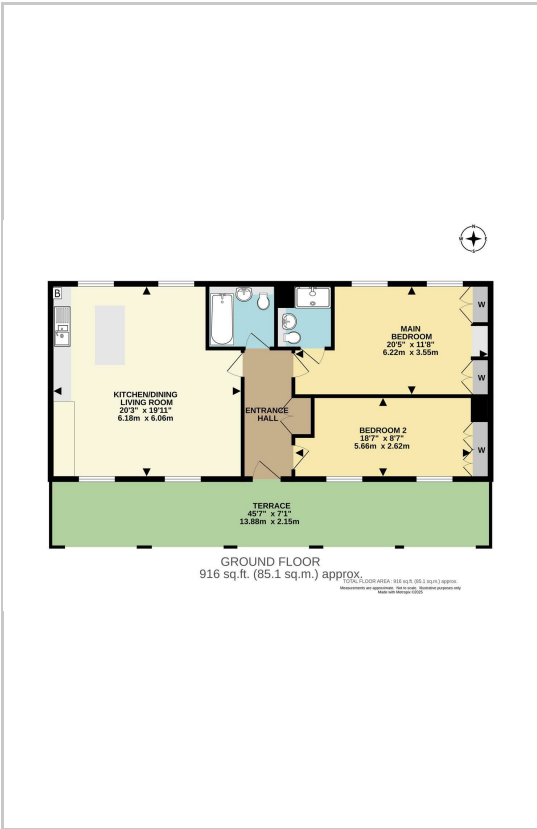
Communal Gardens

Communal Bike Store

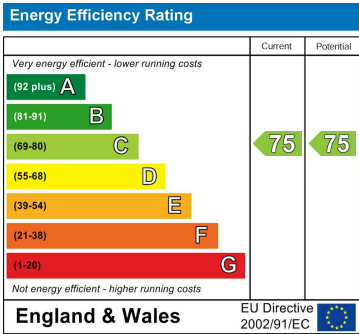
Area Map



Floor Plans



Energy Efficiency Graph



These particulars, whilst believed to be accurate are set out as a general outline only for guidance and do not constitute any part of an offer or contract. Intending purchasers should not rely on them as statements of representation of fact, but must satisfy themselves by inspection or otherwise as to their accuracy. No person in this firms employment has the authority to make or give any representation or warranty in respect of the property.