



Ralston Street
Chelsea, SW3

CHESTERTONS





A well-presented and neutrally decorated one-bedroom apartment, offering bright and comfortable living accommodation in the heart of Chelsea. The property benefits from a modern fitted kitchen, generous built-in storage in the bedroom, and ample natural light throughout, creating a welcoming and practical living space ideal for professionals or couples.

The apartment is superbly positioned on Ralston Street, just moments from the fashionable boutiques, cafés, and restaurants of the King's Road, while Sloane Square Underground station provides excellent transport connections across London.

The River Thames and the beautiful Chelsea Physic Garden are both approximately 0.2 miles away, offering attractive outdoor spaces nearby.

This desirable location combines the charm of a quiet residential street with immediate access to the vibrant lifestyle and amenities of Chelsea.

- One bedroom
- One reception
- One bathroom
- Lateral living

£3,250 pcm

Additional tenant charges apply (fees apply to non-AST tenancies only)

Tenancy Agreement Fee: £300

References per Tenant/Guarantor: £60

Inventory check (approx. £100 – £250 inc. VAT)

chestertons.co.uk/property-to-rent/applicable-fees

| Energy Efficiency Rating | | Current | Potential |
|--------------------------|---|---------|-----------|
| 90-100 | A | | 87 |
| 81-89 | B | | |
| 72-80 | C | | |
| 63-71 | D | 61 | |
| 55-62 | E | | |
| 47-54 | F | | |
| 39-46 | G | | |

Not energy efficient - higher running costs

EU Directive 2002/91/EC

England, Scotland & Wales

Deposit Required:
Local Authority:
Council Tax Band:
EPC Rating: D
Furnished

Five weeks
Kensington and Chelsea
E

Chestertons Chelsea Lettings

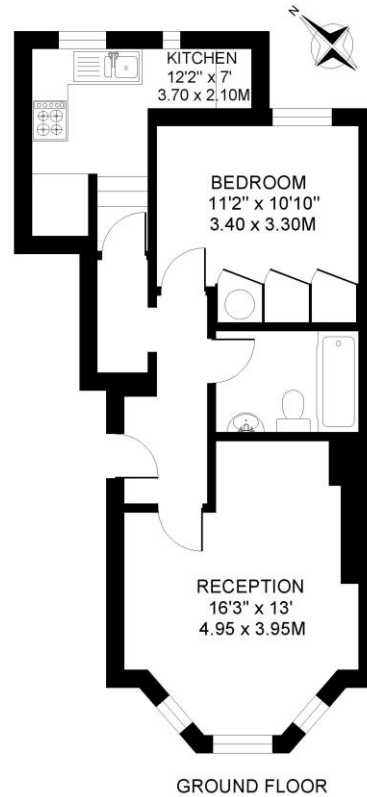
17 Cale Street
 London
 SW3 3QR

chelsealettingsusers@chestertons.co.uk
 02075944750
chestertons.co.uk

RALSTON STREET, CHELSEA, LONDON SW3

APPROXIMATE INTERNAL (LIVING) FLOOR AREA

509 SQ.FT. / 47.3 SQ.M.



GROUND FLOOR

COPYRIGHT: Floorplan produced for "Henry & James Estate Agents Ltd." by floorplanners.co.uk

This plan is not to a given scale, and is for guidance only, and must not be relied upon as a statement of fact.

All measurements are maximum, and include window bays, and wardrobes where applicable.

This plan has been prepared in accordance with the "RICS" Code of Measuring Practice.

Where a room has a sloping ceiling, the dotted line indicates height at 1.5m, and measurements are shown at floor level.

Chesterton UK Services Limited trading as Chestertons for themselves and for the vendor of this property whose agents they are, give notice that (i) these particulars do not constitute any part of an offer or contract, (ii) all statements contained within these particulars are made without responsibility on the part of Chestertons or the vendor, (iii) whilst made in good faith, none of the statements contained within these particulars are to be relied upon as a statement or representation of fact, (iv) any intending purchasers must satisfy themselves by inspection or otherwise as to the correctness of each of the statements contained within these particulars, (v) the vendor does not make or give either Chestertons or any person in their employment any authority to make or give representation or warranty whatsoever in relation to this property. Wide angle lenses may be used. ©Copyright Chestertons | Chesterton Global Ltd | Registered Office 5th Floor, The Lantern, 75 Hampstead Road, London, NW1 2PL Registered Company Number 05334580.



This paper is
100% recyclable