

WE VALUE



YOUR HOME



The Row, Brightwell Baldwin  
£550,000



A delightful Grade II listed cottage enjoying a fabulous semi-rural setting within this charming hamlet, with a beautiful 0.15 acre plot including a secluded 185ft (approx.) south-west facing garden backing directly onto open countryside. To the side is a double-length driveway providing parking for two vehicles.

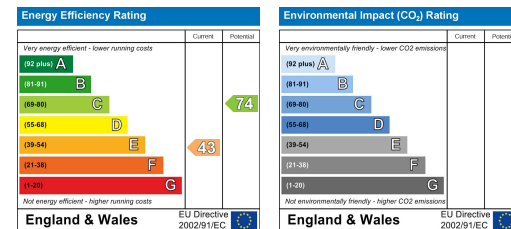
Full of character and charm, the accommodation features exposed beams and brickwork throughout and comprises three bedrooms, a bathroom, a cosy lounge with fireplace, dining room and kitchen with stable door opening onto the garden. Outside, a stylish 18ft studio with mezzanine offers excellent versatility, ideal as a home office or creative space.

Surrounded by rolling countryside, the property is nevertheless conveniently placed just 3 miles from the centre of Watlington and 6 miles from Junction 6 of the M40, providing excellent access to London and Oxford.



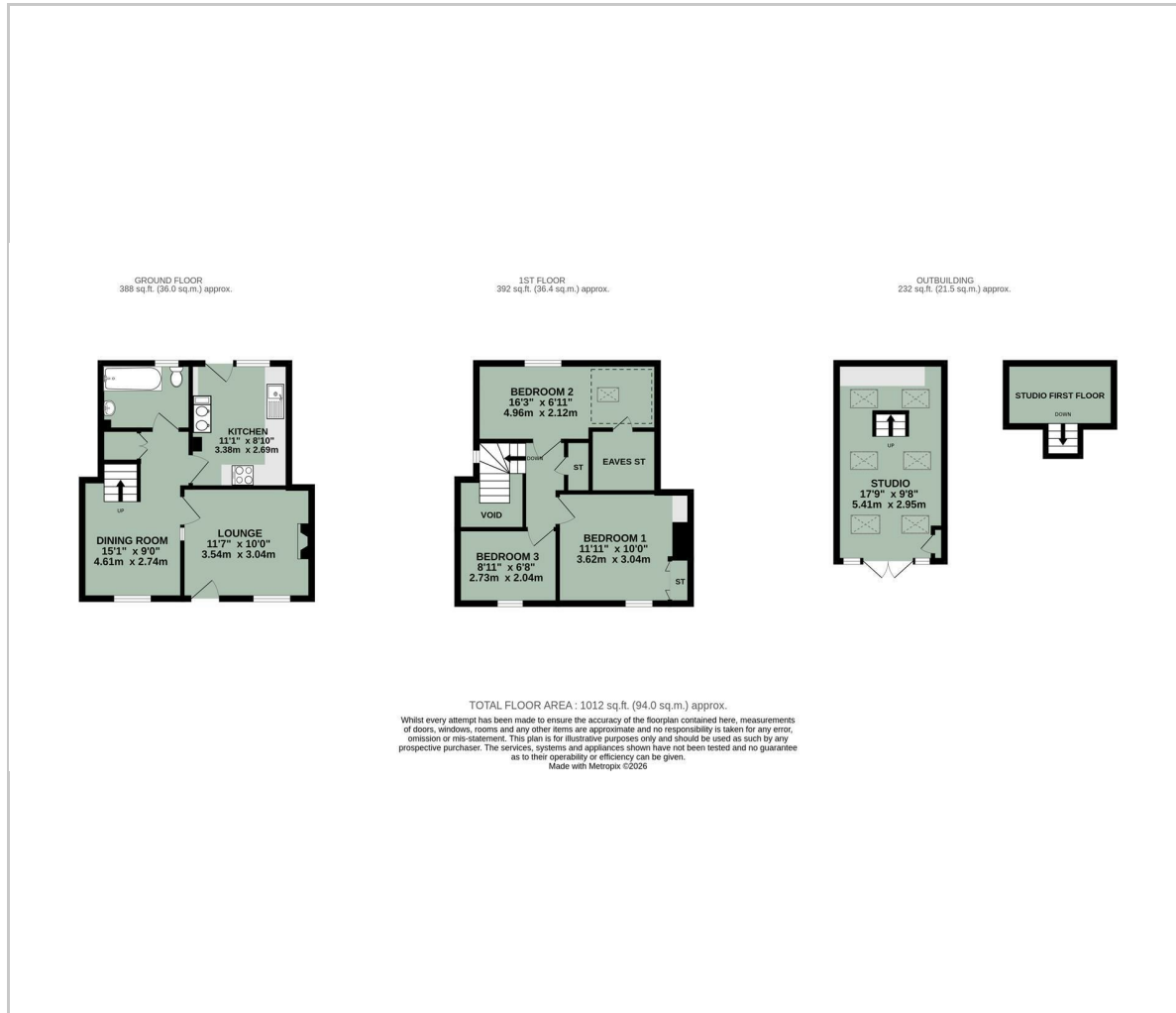


- BEAUTIFULLY PRESENTED THROUGHOUT
- CHARACTERFUL GRADE II LISTED COTTAGE
- 185FT (approx.) SOUTH-WEST FACING REAR GARDEN
- VERSATILE STUDIO WITH UNDERFLOOR HEATING & VELUX WINDOWS
- COSY LOUNGE WITH FIREPLACE
- THREE BEDROOMS & FAMILY BATHROOM
- OFF-STREET PARKING FOR TWO VEHICLES



Energy Efficiency Graph

## Floor Plan



## Area Map



## Viewing

Please contact our In House Sales & Lettings Office on 01491 839999 opt.1 if you wish to arrange a viewing appointment for this property or require further information.

These particulars, whilst believed to be accurate are set out as a general outline only for guidance and do not constitute any part of an offer or contract. Intending purchasers should not rely on them as statements of representation of fact, but must satisfy themselves by inspection or otherwise as to their accuracy. No person in this firm's employment has the authority to make or give any representation or warranty in respect of the property.

28 St Martins Street, Wallingford, Oxfordshire, OX10 0AL  
Tel: 01491 839999 opt.1 Email: [sales@inhouseestateagents.co.uk](mailto:sales@inhouseestateagents.co.uk) [www.inhouseestateagents.co.uk](http://www.inhouseestateagents.co.uk)