



Ashchurch Grove, W12

£2,250,000

This immaculate five bedroom family home, situated within this gated development, boasts over 2,400 sq ft of living space. The property has been finished to an incredibly high standard throughout and offers two reception rooms with direct access to the property's outdoor areas as well as a modern kitchen with fitted appliances.

Ashchurch Grove is very well located, close to the amenities of Askew Village and only a short walk away from either Stamford Brook or Ravenscourt Park. Wendell Park is a short walk away.

Features

- Five Bedrooms
- Five Bathrooms
- Two Reception Rooms
- Off Street Parking
- Gated Community
- Centrally Located

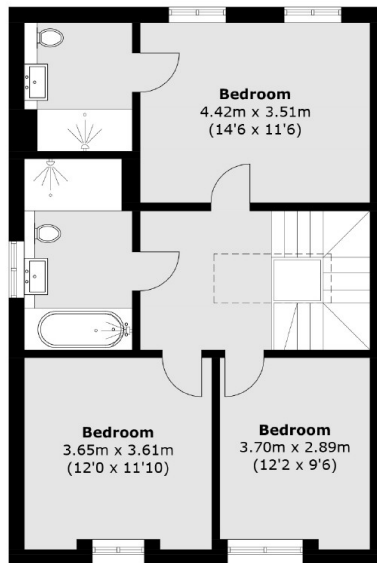


Ashchurch Grove, W12

This property comes complete with a dining area which makes for a great entertaining space, five double bedrooms, five bathrooms and two utility rooms. Additionally, this home benefits from a private car parking space.



Ashchurch Grove, London, W12



Second Floor



Ground Floor

First Floor

Total area (approx.): 233.5 sq. m (2,513.3 sq. ft)
Balcony: 4.4 sq. m (47.4 sq. ft)