



TOOMEY
ESTATE AGENTS



72 Bond Road Mitcham

£440,000

Freehold

*** Three Bedroom Terraced House – In Need of Modernisation ***

A three bedroom terraced house situated on Bond Road, offering excellent potential for improvement and value enhancement.

The property comprises two well-proportioned double bedrooms and a third single bedroom, making it suitable for families, first-time buyers or investors. On the ground floor, there are two separate reception rooms, providing flexible living and dining space.

There is one family bathroom and the property is generally in need of modernisation throughout, presenting an ideal opportunity for refurbishment and personalisation.

Located within a residential area with good access to local amenities, transport links, and schools, this property offers strong potential for those looking to add value.



- Terraced House • Three Bedrooms • Two Reception Rooms • Excellent refurbishment opportunity • Access to local amenities and transport links

Lounge

Double Glazed window to front aspect, picture rail, gas fire with timber fireplace surround.

Dining Room

Single glazed window and door leading to rear garden, understairs storage cupboard, picture rail, tiled fireplace surround, door leading to kitchen.

Kitchen

Glazed window to rear aspect, comprising range of eye and base level units, stainless steel sink unit, space and plumbing for washing machine, space for gas oven, wall mounted gas water heater, Glazed timber door to rear garden.

First floor Landing

Doors to all rooms, access to loft hatch

Bedroom 1

Double glazed bay window to front aspect, picture rail.

Bedroom 2

Double glazed window to rear aspect, picture rail

Bedroom 3

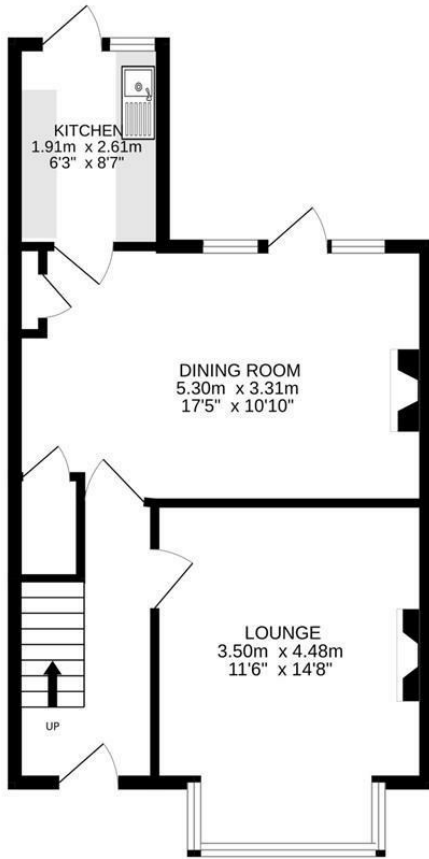
Double glazed window to front aspect

Bathroom

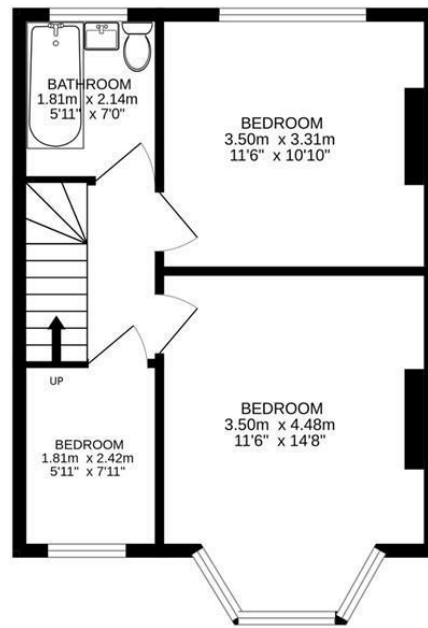
Obscure double glazed window to rear aspect. Panel enclosed bath, pedestal wash hand basin, low level W.C, fully tiled walls







Ground floor
43.0 sq.m. (463 sq.ft.) approx.



1st floor
37.7 sq.m. (406 sq.ft.) approx.

TOTAL FLOOR AREA: 80.7 sq.m. (869 sq.ft.) approx.
Measurements are approximate. Not to scale. Illustrative purposes only
Made with Metropix ©2026



Energy Efficiency Rating		Current	Potential
Very energy efficient - lower running costs			
(92 plus) A			
(81-91) B			85
(69-80) C			
(55-68) D		59	
(39-54) E			
(21-38) F			
(1-20) G			
Not energy efficient - higher running costs			
England & Wales		EU Directive 2002/91/EC	

Agents Note: Whilst every care has been taken to prepare these particulars, they are for guidance purposes only. All measurements are approximate and are for general guidance purposes only and whilst every care has been taken to ensure their accuracy, they should not be relied upon and potential buyers/tenants are advised to recheck the measurements

Toomey Estate Agents Sales
333a London Road
Mitcham
Surrey
CR4 4BE

0208 715 9333
enquiries@toomeyestateagents.co.uk
www.toomeyestateagents.co.uk

