



## Teignmouth Road, NW2

### Share of Freehold - £735,000

A beautifully presented two-bedroom apartment arranged over two floors, set within an attractive period conversion on the sought-after Teignmouth Road. Combining period charm with contemporary styling, the property offers bright and spacious accommodation throughout.

The heart of the home is the impressive kitchen/diner, featuring a large bay window that floods the space with natural light and provides ample room for dining, entertaining and everyday living. The kitchen is thoughtfully designed with modern fitted units, generous worktop space and excellent storage. A separate reception room provides a comfortable and versatile living area.

The first floor comprises two well-proportioned double bedrooms, complemented by a contemporary family bathroom. Useful eaves storage and additional built-in cupboards offer practical storage solutions throughout the property.

Further benefits include access to a substantial mature communal garden. Ideally positioned for excellent transport links, the property is within easy reach of Willesden Green Underground Station (Jubilee Line, Zone 2), as well as a wide range of local shops, cafés and amenities.



020 7328 2828

[enquiries@cameronsstiff.co.uk](mailto:enquiries@cameronsstiff.co.uk)

[cameronsstiff.co.uk](http://cameronsstiff.co.uk)





## Teignmouth Road, London, NW2



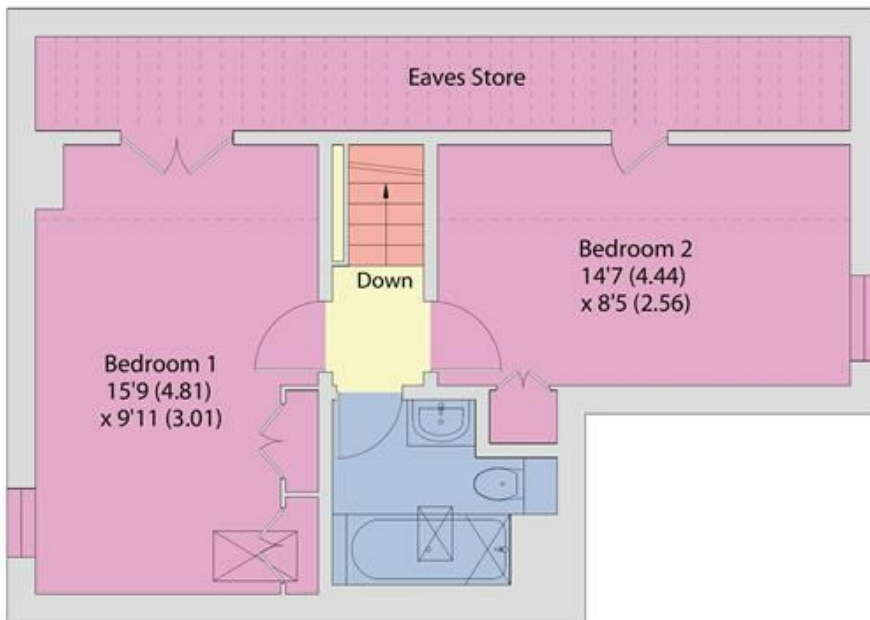
Denotes restricted head height

Approximate Area = 853 sq ft / 79.2 sq m

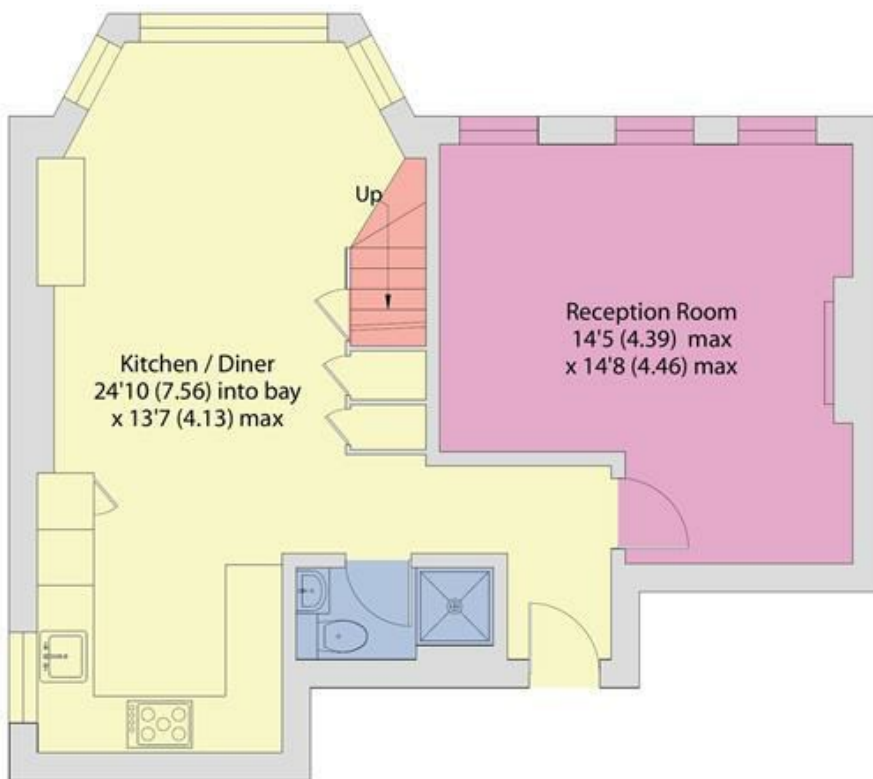
Limited Use Area(s) = 171 sq ft / 15.8 sq m

Total = 1024 sq ft / 95 sq m

For identification only - Not to scale



FIRST FLOOR



GROUND FLOOR

EPC: C

Ref: 19787686



Floor plan produced in accordance with RICS Property Measurement 2nd Edition, Incorporating International Property Measurement Standards (IPMS2 Residential). © nichecom 2026. Produced for Camerons Stiff & Co. REF: 1473362

