



# Moore Street

Poets Corner, Northampton

oriordanbond  
SALES & LETTINGS



## Moore Street

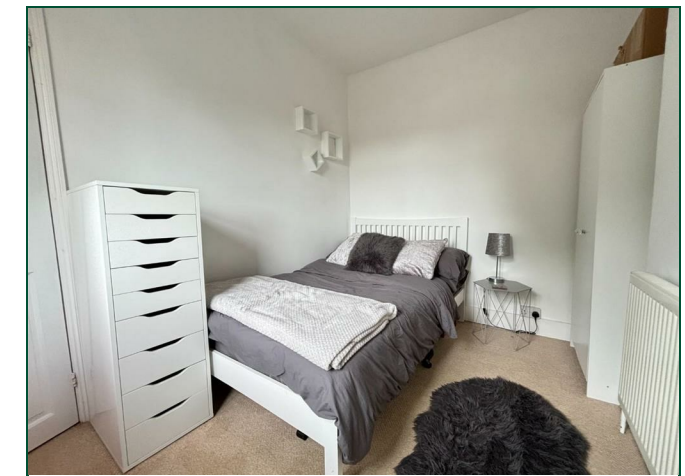
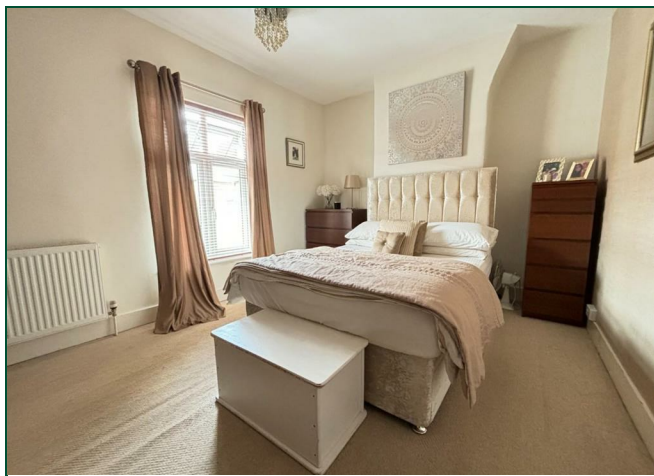
Poets Corner  
NN2 7HU

Guide Price  
£215,000

O'Riordan Bond is delighted to offer for sale this extremely well presented two bedroom terraced home situated in the sought after Poets Corner area within Kingsley.

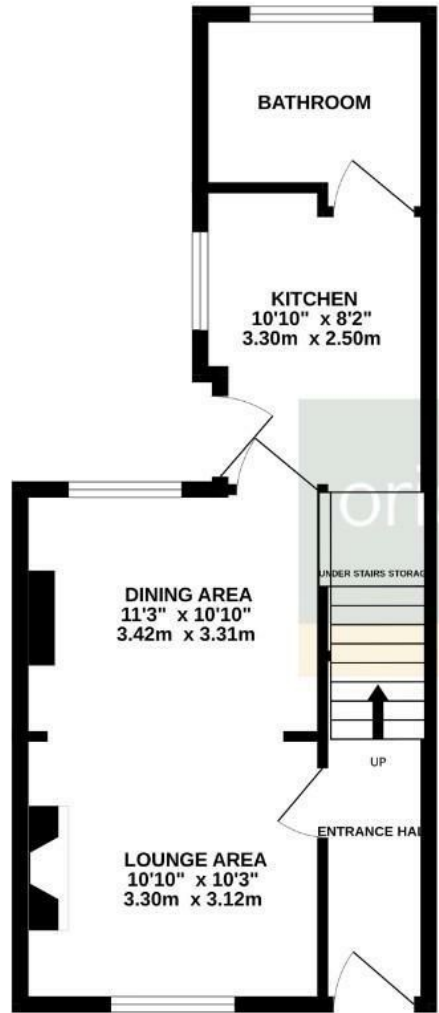
The property has been refurbished by the current owner and is offered for sale with accommodation comprising entrance hall, sitting/dining room, re-fitted kitchen and a re-fitted shower room. To the first floor are two double bedrooms. Outside is a front courtyard and large enclosed rear garden. Further benefits include gas radiator heating and uPVC double glazing. (A/663/L)

- Refurbished two bedroom terraced family home
- Re-fitted kitchen
- Re-fitted shower room
- Gas radiator heating
- uPVC double glazing
- Large enclosed rear garden

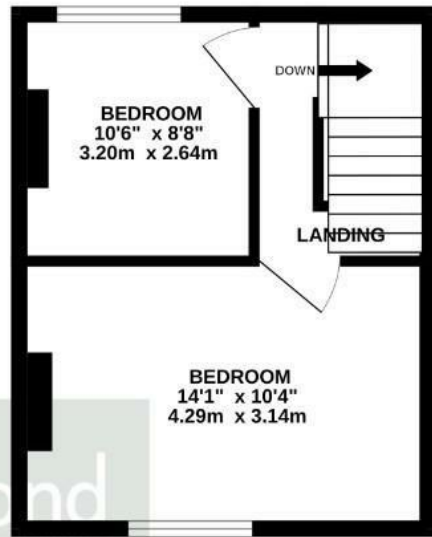




GROUND FLOOR



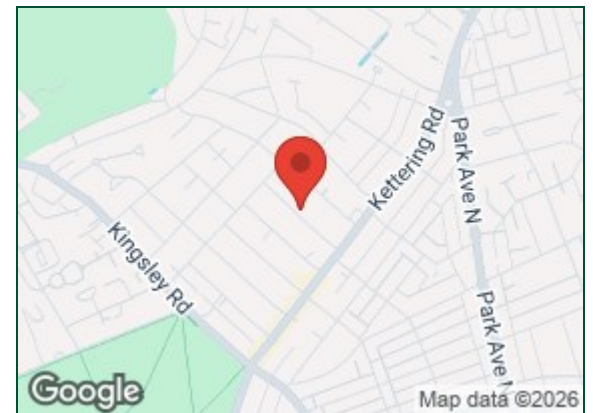
1ST FLOOR



O'Riordan Bond  
SALES & LETTINGS

TOTAL FLOOR AREA : 663 sq.ft. (61.6 sq.m.) approx.

Whilst every attempt has been made to ensure the accuracy of the floorplan contained here, measurements of doors, windows, rooms and any other items are approximate and no responsibility is taken for any error, omission or mis-statement. This plan is for illustrative purposes only and should be used as such by any prospective purchaser. The services, systems and appliances shown have not been tested and no guarantee as to their operability or efficiency can be given.  
Made with Metropix ©2024



**Additional information**

- Council Tax Band: B
- Energy Efficiency Rating:

**Viewing**

Viewing strictly by appointment – details below

**Disclaimer**

O’Riordan Bond Estate Agents Limited has not tested apparatus, equipment, fittings or services and so cannot verify they are in working order. The buyer is advised to obtain verification from their solicitor or surveyor.

**O’Riordan Bond Abington Sales**

01604 639007

abington@oriordanbond.co.uk

