



RADCOT STREET, SE11

£750,000

Two bedrooms
Private entrance
High specification
Beautifully presented
Private garden
Excellent transport links

@marshandparsons
marshandparsons.co.uk

MARSH &
PARSONS



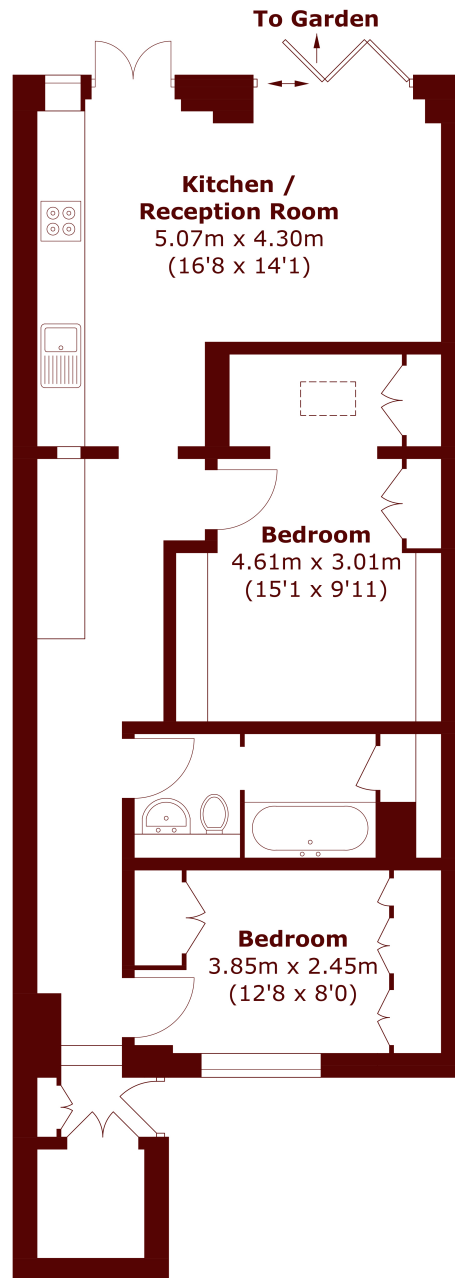
ABOUT THE PROPERTY

This stunning period conversion has been designed with exceptional attention to detail and offers a contemporary finish, flooded with natural light. With its own private entrance, the property benefits from two double bedrooms, and an open plan living room. There are full bi-fold doors leading on to a beautiful, landscaped rear garden creating an indoor outdoor lifestyle and exceptional entertaining space.

Radcot Street is one of Kennington's most desired residential streets, a short walk from all local amenities in the Kennington Cross area including the green open space of Kennington Park.



STEP INSIDE RADCOT STREET



Total area (approx.): 64.6 sq. m (695.3 sq. ft)

Kennington
020 7587 1533

Energy Rating: C We aim to make our particulars both accurate and reliable. However, they are not guaranteed; nor do they form part of an offer or contract. If you require clarification on any points then please contact us, especially if you're traveling some distance to view. Please note that appliances and heating systems have not been tested and therefore no warranties can be given as to their good working order

**MARSH &
PARSONS**