



Connells

Woodlands Crescent
Buckingham



Property Description

Situated on the sought-after Woodlands Crescent, this home offers generous accommodation, a superb plot and the additional benefit of no onward chain.

The layout provides excellent flexibility, with spacious ground-floor living areas and two large first-floor bedrooms.

The property is entered through a porch leading into a welcoming hall. From here, you access the bright lounge positioned at the front of the home, offering a comfortable space for relaxing and everyday living. The kitchen sits centrally and is supported by a useful storage area. To the rear, a spacious dining room provides an excellent setting for family meals or entertaining, with access into a study, creating further versatility for home working or hobbies. A ground-floor bathroom completes the accommodation on this level.

Upstairs, the home offers two generously sized bedrooms arranged from the landing, both benefiting from excellent proportions and natural light.

Externally, the rear garden is large and private, offering an expansive lawned area ideal for outdoor dining, play or future landscaping potential. To the front, the property enjoys a generous driveway providing ample off-road parking, along with a garage for additional storage or vehicle space.

Located in a highly desirable area and offered with no chain, this spacious home presents an excellent opportunity for buyers seeking a well-proportioned property on a standout plot in a prime Buckingham location.

Mortgage Services

Connells Buckingham have an experienced Mortgage Consultant who can offer advice and recommend products based on your circumstances. For more information on our fantastic services, contact us.

Entrance Porch

Entrance Hall

Lounge

17' 5" x 10' 4" (5.31m x 3.15m)

Internal Hall

Kitchen

10' 6" x 8' 3" (3.20m x 2.51m)

Dining Room

12' 11" x 10' 4" (3.94m x 3.15m)

Study

10' 1" x 10' (3.07m x 3.05m)

Bathroom

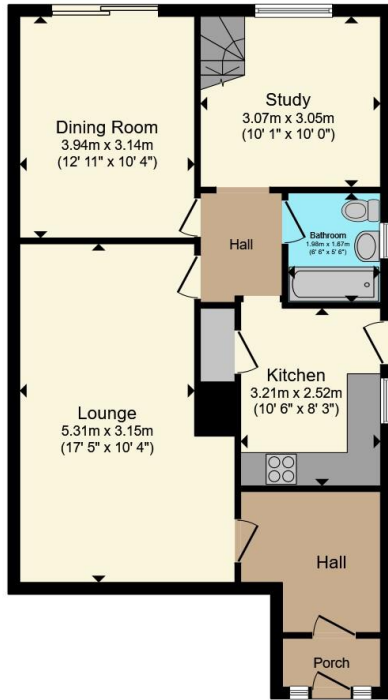
Bedroom 1

18' 1" x 10' 4" (5.51m x 3.15m)

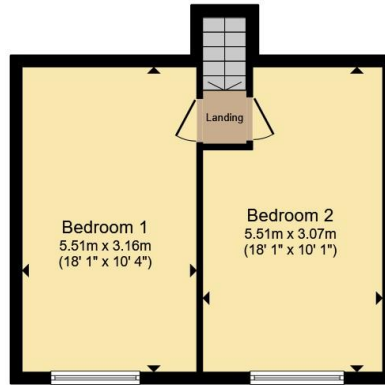
Bedroom 2

18' 1" x 10' 1" (5.51m x 3.07m)





Ground Floor



First Floor

Total floor area 106.2 m² (1,143 sq.ft.) approx

This floor plan is for illustrative purposes only. It is not drawn to scale. All measurements, floor areas (including any total floor area), openings and orientation are approximate. No details are guaranteed, they cannot be relied upon for any purpose and they do not form part of any agreement. No liability is taken for any error, omission or misstatement. A party must rely upon its own inspection(s). Powered by www.propertybox.io



To view this property please contact Connells on

T 01280 822 727
E buckingham@connells.co.uk

2 West Street
 BUCKINGHAM MK18 1HL

EPC Rating: D Council Tax Band: D

view this property online connells.co.uk/Property/BUK308046

Tenure: Freehold



1. MONEY LAUNDERING REGULATIONS Intending purchasers will be asked to produce identification documentation at a later stage and we would ask for your co-operation in order that there will be no delay in agreeing the sale. 2. These particulars do not constitute part or all of an offer or contract. 3. The measurements indicated are supplied for guidance only and as such must be considered incorrect. Potential buyers are advised to recheck measurements before committing to any expense. 4. We have not tested any apparatus, equipment, fixtures, fittings or services and it is in the buyers interest to check the working condition of any appliances.

Connells Residential is registered in England and Wales under company number 1489613, Registered Office is Cumbria House, 16-20 Hockliffe Street, Leighton Buzzard, Bedfordshire, LU7 1GN. VAT Registration Number is 500 2481 05.

See all our properties at www.connells.co.uk | www.rightmove.co.uk | www.zoopla.co.uk

Property Ref: BUK308046 - 0004