



Let **UK** Home

1 Bedrooms

Flat

Located in London

£2,600 Per Month



info@letukhome.co.uk

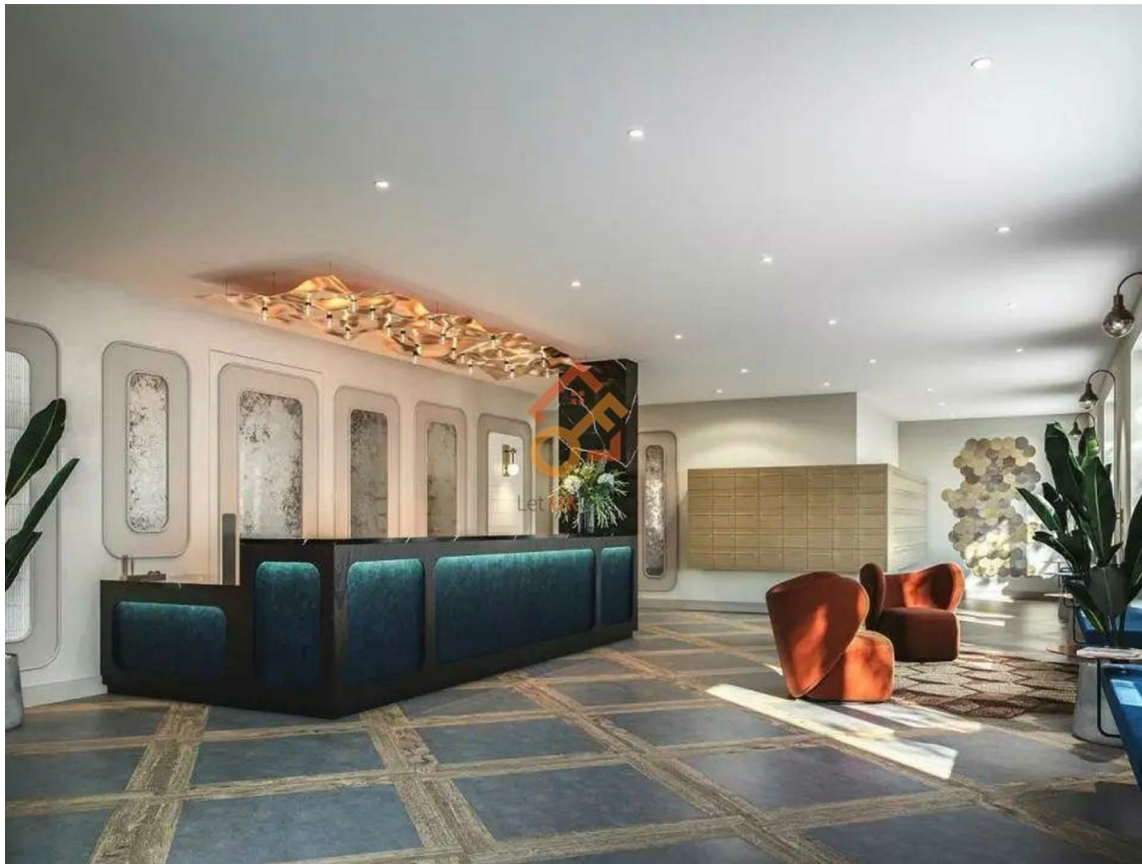
<https://www.letukhome.co.uk/>

01795 358 886



3 Monarch Square London

SW11 1DF



Let UK Home are excited to present this one-bedroom apartment in Provence Apartments, part of One Clapham Junction development.

The flat comprises a spacious open kitchen with a stylishly attached dining area, a magnificent living room leading to a private balcony, one bright bedroom with fitted wardrobe and ensuite, and ample storage.

The development offers premium private facilities for all residents: dedicated concierge service, fully equipped Peloton fitness suite, children's play zone, communal social lounge and sun terrace.

A short walking distance to Clapham Junction Station, one of London's busiest transport interchanges. Fast direct services run to Victoria Station, Waterloo, Buckingham Palace and the London Eye, with comprehensive rail connections across central London retail districts.

From One Clapham Junction, residents can quickly reach some of London's famous universities: University College London, the London School of Economics, Imperial College, and King's College London, so great educational opportunities are right at your doorstep.

Clapham is a hotspot for young professionals, lined with trendy independent cafes and diverse restaurants. Three expansive public green spaces sit on the doorstep: Wandsworth Common, Clapham Common and Battersea Park, offering endless outdoor recreation, walking trails and leisure activities year-round.

3 Monarch Square London

£2,600 Per Month

- 3rd Floor
- 24h Security
- Fully Furnished
- Concierge Service
- Walkable to Clapham Junction Station
- EPC Rating: B





Let **UK** Home

3F 2 Eastbourne Terrace
 Paddington
 London
 W2 6LG

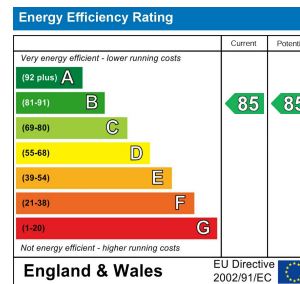
01795 358 886

info@letukhome.co.uk

Council Tax Band:

Local Authority:

Agents Note: Whilst every care has been taken to prepare these particulars, they are for guidance purposes only. All measurements are approximate and are for general guidance purposes only and whilst every care has been taken to ensure their accuracy, they should not be relied upon and potential buyers/tenants are advised to recheck the measurements.



<https://www.letukhome.co.uk/>