

Frank Harris & Co.



Russell Court, WC1H

£325,000

Situated on the third floor of an elegant mansion block in the very heart of Bloomsbury, this studio apartment features a separate kitchen and built-in storage with shelving. The property provides a period charm with modern convenience in one of London's most desirable locations.



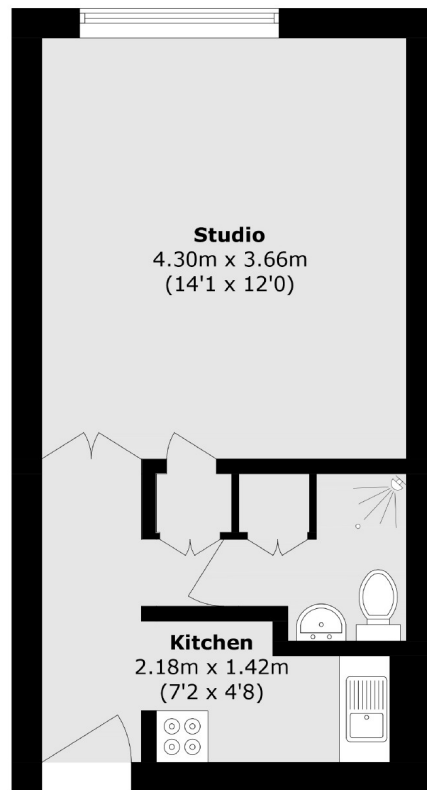
A short walk from Russell Square Underground station, with Goodge Street and Euston Square stations under 0.5 miles away. Euston and King's Cross St Pancras rail stations are within a 10 to 15 minute walk.

- Share Of The Freehold • Lift Access • Central Location •
- 24 Hour Concierge • Third Floor • No Onward Chain •



Frank Harris

& Co.



Total area (approx.): 26.6 sq. m (286.3 sq. ft)

Frank Harris & Co. Bloomsbury and Kings Cross
81 Marchmont Street,
London, WC1N 1AL
020 7405 4444
bloomsburysales@frankharris.co.uk

Energy Rating: C. We aim to make our particulars both accurate and reliable. However they are not guaranteed; nor do they form part of an offer or contract. If you require clarification on any points then please contact us, especially if you're traveling some distance to view. Please note that appliances and heating systems have not been tested and therefore no warranties can be given as to their good working order.

