

shepherds

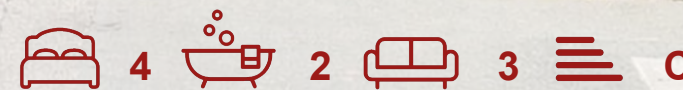
A better home  
moving experience



59 Lodge Close

Bengeo, SG14 3DH

Price Guide £850,000



## 59 Lodge Close

Bengeo, SG14 3DH

Tucked away on a peaceful no-through road in the heart of Bengeo, this exceptional four-bedroom extended detached family home has been thoughtfully remodelled by the current owners. Offering a superb balance of space, style, and practicality, it provides an ideal setting for family life, while enjoying close proximity to local shops, amenities, and highly favoured schooling. From the moment you arrive, the property's attractive frontage and well-kept driveway create an immediate sense of welcome. Once inside, you are greeted by a spacious hallway that sets the tone for the elegant and contemporary interiors throughout.

At the heart of the home lies a spectacular open-plan kitchen, dining, and family space — an area that has been cleverly designed and extended to provide a true hub for modern living. Bathed in natural light through overhead skylights and wide doors opening directly onto the garden, this impressive space is perfect for both everyday family life and entertaining.

To the front of the property, a substantial 19' living room offers a calm and comfortable retreat, while a separate playroom/study provides valuable flexibility to adapt to changing family needs — whether as a children's play area, home office, hobby room, or snug. Completing the ground floor is a practical cloakroom/WC, adding to the property's well-considered layout.

Upstairs, the home continues to impress with four bedrooms. The principal bedroom benefits from bespoke fitted wardrobes and a contemporary ensuite shower room, creating a private sanctuary for relaxation. A well-appointed family bathroom serves the remaining bedrooms, all of which are airy and finished to a high standard.

The landscaped rear garden offers ease of maintenance with a decked patio provides the perfect spot for alfresco dining, while the artificial lawn while the artificial lawn ensures a green and tidy appearance year-round, with minimal upkeep required. The front driveway offers convenient off-street parking.

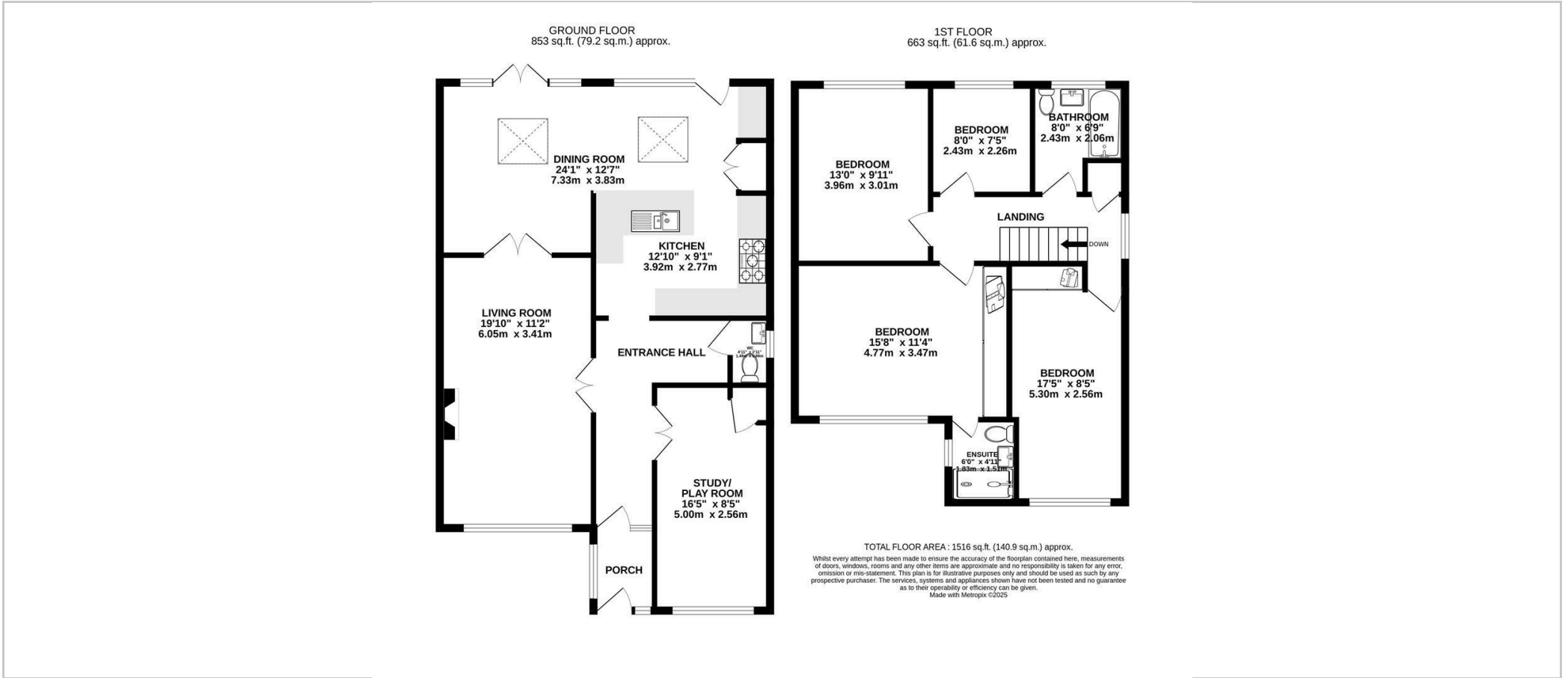




- Four bedroom extended detached house
- Peaceful no through road position in the heart of Bengeo
- Remodelled and refurbished by the current vendors
- Stunning open plan kitchen/dining room to rear overlooking the garden
- Spacious 19' living room with separate further study/playroom
- Master bedroom with built in wardrobes and ensuite shower room
- Family bathroom plus additional ground floor cloakroom
- Attractively landscaped garden to rear with large decked seating area and artificial lawn
- Driveway to front providing off street parking
- Access to local shops and favoured schooling



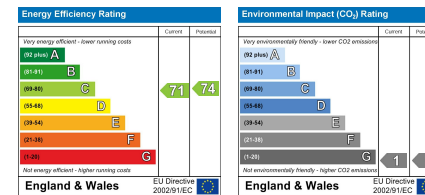
# Floor Plan



## Viewing

Please contact Shepherds of Hertford on 01992 551955 if you wish to arrange a viewing appointment for this property or require further information.

## Energy Performance Graph



These particulars, whilst believed to be accurate are set out as a general outline only for guidance and do not constitute any part of an offer or contract. Intending purchasers should not rely on them as statements of representation of fact, but must satisfy themselves by inspection or otherwise as to their accuracy. No person in this firm's employment has the authority to make or give any representation or warranty in respect of the property.

Riverside House, 6 Millbridge, Hertford, SG14 1PY  
Tel: 01992 551955 Email: enquiries@shepherdsfhertford.co.uk